

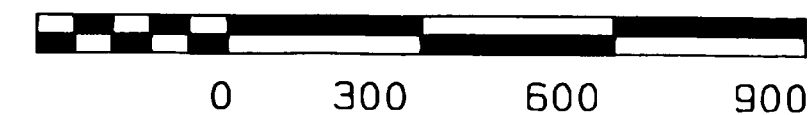
## SURVEY

IN NE 1/4 SW1/4 SECTION 8  
T1N, R5E, W.M.  
SKAMANIA COUNTY, WA.

FILED FOR RECORD  
SKAMANIA COUNTY, WA.  
APR 29 4 13 PM '96

GARY L. OLSON

GRAPHIC SCALE 1"=300'



## SURVEYOR'S CERTIFICATE

This map correctly represents a survey made by me or under my direction in conformance with the requirements of the Survey Recording Act at the request of DONALD H. SPEES in AUGUST, 19 95

## AUDITOR'S CERTIFICATE

Filed for record this 29th day of April, 19 96 at 4:13 pm  
In Book 3 of surveys at page 223 at the request of  
Bell Design Company, Inc.

(Signed) Peggy Lowry  
(Deputy County Auditor)

## NARRATIVE

A closed traverse was run around the NE1/4 SW1/4 Sec. 8 connecting the S1/4 corner and C1/4 corner to get on the same base as the Olson Engineering Subdivision of Sec. 8 (REF#2). Field equipment used was a Topcon GTS 3B and other related equipment. Traverse closure was 1:47891, adjusted traverse balance by compass rule.

## LEGAL DESCRIPTION

Book 103, Page 633 of Deeds, Skamania County.  
NE1/4 SW1/4 Sec. 8, T.1N., R.5E., W.M.; except a one acre parcel located in the NE corner described as follows:  
Beginning at the C1/4 corner of Sec. 8; thence S 89°13'45"W 208.79'; thence S1°32'16"W, 208.79'; thence N89°13'45"E 208.79'; thence N1°32'16"E 208.79' to the point of beginning containing one acre. (NOTE: Held one acre, 43560 S.F., with equal distance sides senior and length of sides secondary.)

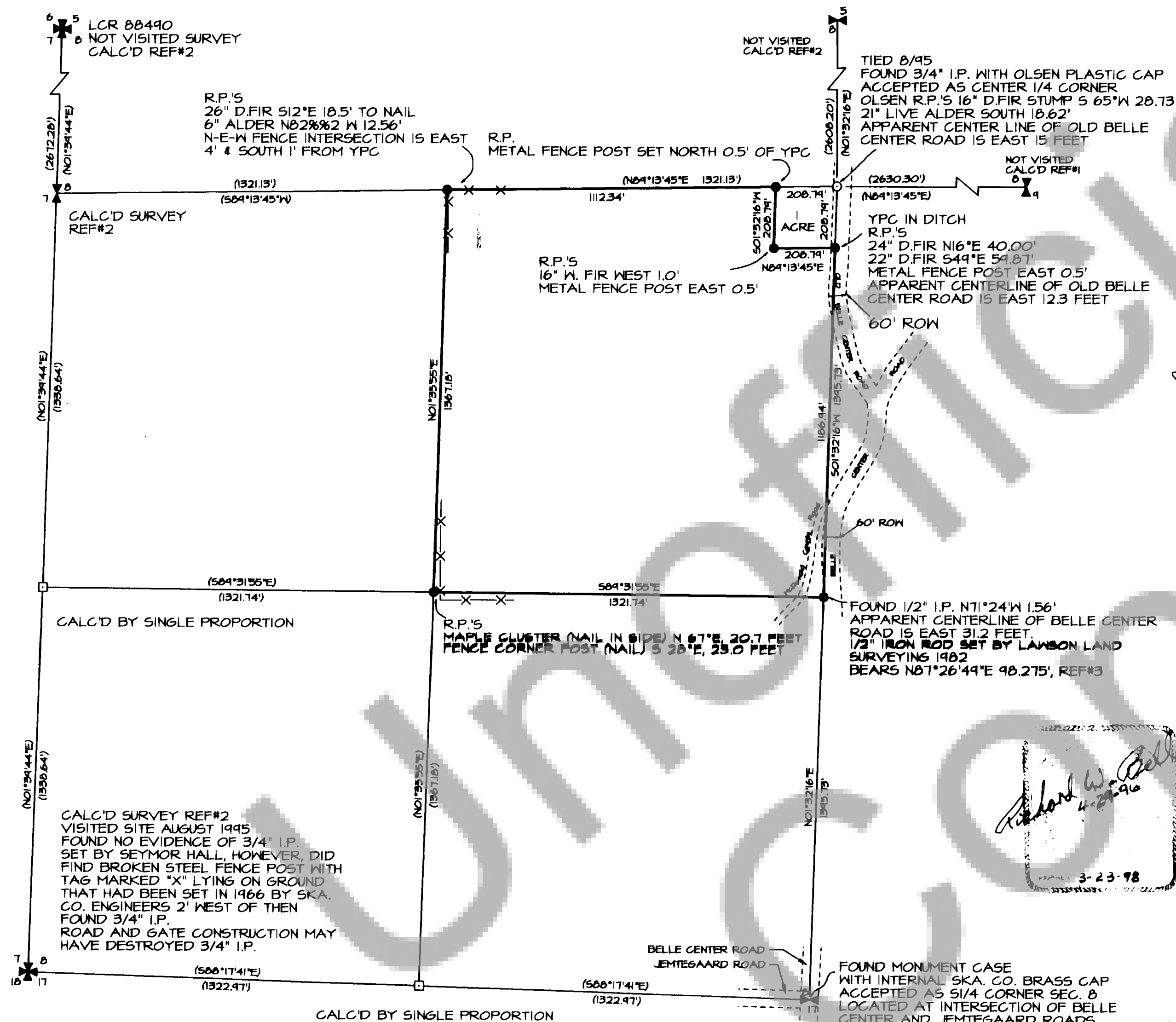
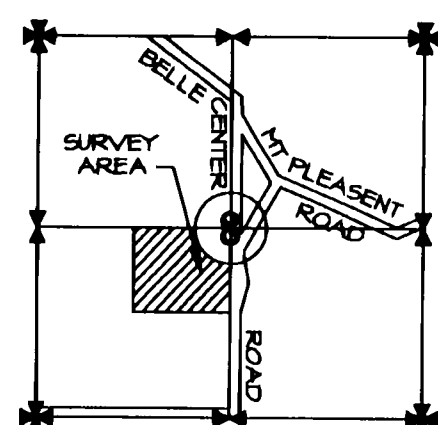
Bell Design Company, Inc. makes no warranty as to matters of unwritten title, adverse possession, estoppel, acquiescence, etc.

## REFERENCES

1. 1975 THOMAS SURVEY OF SEC. 8
2. 1978 OLSON SURVEY BOOK 1, PAGE 177
3. 1982 LAWSON LAND SURVEYING BOOK 2, PAGE 120

## BASIS OF BEARING

Olson Engineering 1978 Survey  
Auditor No. 87757; Book 1 of Surveys  
Page 177, Skamania County

VICINITY MAP  
NOT TO SCALE

## LEGEND

- MARKER FOUND AS NOTED
- ✕ CORNER OF RECORD
- SET 5/8" REBAR WITH YELLOW PLASTIC CAP (YCP)
- CALCULATED CORNER; NOT SET.
- ( ) PLAT CALL



| REV | DATE    | DESCRIPTION | BY  |
|-----|---------|-------------|-----|
| 1   | 4/29/96 | PLAT CALLS  | DAE |

NE1/4 SW1/4 S8 T1N R5E W.M.

SURVEY  
FOR DON SPEES

SHEET: 1 OF 1  
PROJECT: 95B46  
DATE: APRIL 96