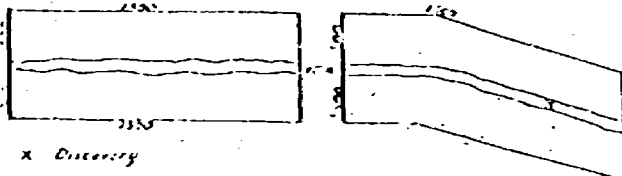


NOTICE OF MINING LOCATION



x Discovery

also diagram method of description of claim

Washington State
Skamania County
(or Recording Precinct)
Mining District

124997

BOOK 156 PAGE 518

NOTICE IS HEREBY GIVEN That the undersigned who is/are (have declared all intention, as a citizen of the United States, have discovered and have located and claimed and do hereby locate 1500 linear feet in length, and 600 feet in width on the Lode CLARK PHOENIX #1 thru 8 deposit (or lode or ledge) situated in the above State, County (or Recording Precinct) and Mining District, and further described as follows: Commencing at a post marked No. 1 at the Discovery shaft (cut or tunnel), from thence 750 feet in a NORTHERLY direction to an end post marked No. 2, thence 600 feet in a EASTERLY direction to a corner post marked No. 3, thence 750 feet in a SOUTHERLY direction to a corner post marked No. 4, thence 750 feet in a SOUTHERLY direction to a corner post marked No. 5, thence 600 feet in a WESTERLY direction to a corner post marked No. 6, thence 1500 feet in a NORTHERLY direction to said end post No. 2; hereby locating and intending to claim 900,000 square feet in a N, E, S and W direction from discovery to the deposit precious metals & minerals in pl. end line, and 600 feet in the opposite direction from discovery to the East to West end line and 300 feet on each side of the middle of said lode or ledge, for the purpose of mining the same and claiming all surface rights, privileges, and minerals, with all dips, spurs, angles and variations, and other rights granted by existing laws and customs.

This claim is further described by reference to natural objects or permanent monuments, as follows: Claim sits on Federal owned land in Gifford Pinchot National Forest in Section 15, Township 9 North, Range 9 East, Western Meridian. They are approximately $\frac{1}{2}$ mile in a South Westerly direction from intersection of Forest service road 9091 and 081. These claims run contiguous of one another. Apex taken on claims in all direction.

This notice is placed at Discovery on post No. 1; posts are placed at each corner, and the name of this lode, and date of location, are placed on all posts.

Located the 10 day of September, 1991 By Ed Fazio

Raymond A. Whitten

WITNESSES:

Charlotte A. Cherry

FILED FOR RECORD
SKAMANIA CO. WASH.

BY Raymond Whitten

Locators.

APR 10 3 35 PM '96

Garry Olson
AUDITOR
GARY H. OLSON

Ex-12000 ✓
Indexed, Eir ✓
Indirect ✓
Filed
Noted

BOOK 126 PAGE 39

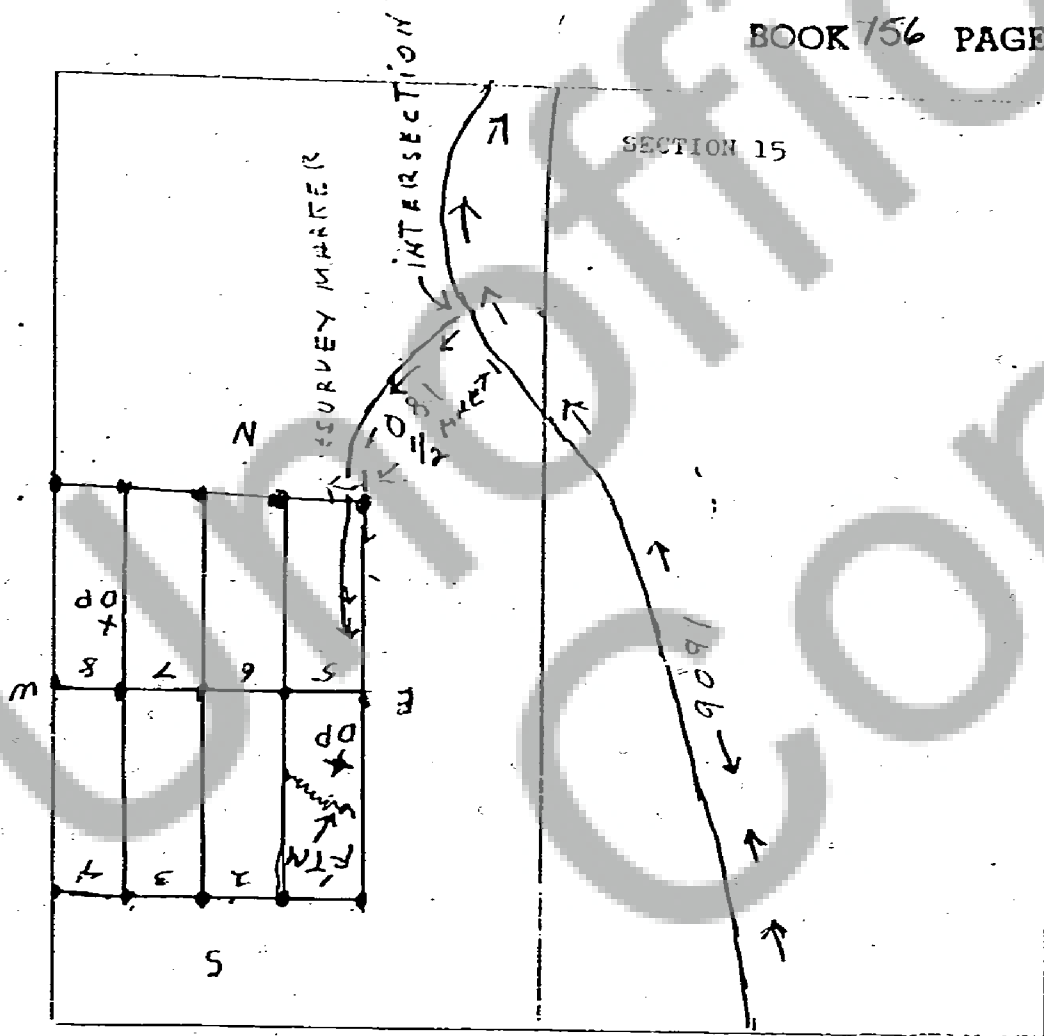
Phoenix lode claims No. 1, 2, 3, 4, 5, 6, 7 and 8 lie in South westerly direction approximately $\frac{1}{2}$ of a mile from the intersection of Forest service road 9091 and 081 in Section 15 Township 9 North, Range 9 East, W.M. Gifford Pinchot National Forest. These claims run contiguous of one another. Appex taken on these claims in all direction Edward H Fire located these claims September 10, 1991

BUREAU OF LAND
MANAGEMENT

DEC -5 AM 10 30

OREGON STATE OFFICE
PORTLAND, OR

BOOK 156 PAGE 520



ORNC138464

We declare prior discovery rights to minerals
in place on these claims. Ed Fire

Raymond Whitten

MARK THE CORNER LOCATION ON THE DIAGRAM BELOW AND FILL IN THE CORNER CODE BLANK ON THE OTHER SIDE:

(1) For corners located at the intersection of two lines (Section corners, quarter corners and sixteenth corners):

(a) The corner code is the alpha-numeric coordinate from the diagram below that corresponds to the appropriate intersection of lines.

(2) For corners that are not located at the intersection of two lines (Meander corners, DLC's, HES's, reservation boundaries, mining claims, etc.):

(a) For corners that are on one line only the corner code is the line designation and the related line segment; i.e., a corner on line 5 between "B" and "C" is designated BC-5.

(b) For corners that are between lines the corner code is both line segments; i.e., a corner in the SE1/4 of the SE1/4 of section 18 is designated MN-4-5.

	1	2	3	4	5	6	7	8	9	10	11	12	13	14	15	16	17	18	19	20	21	22	23	24	25
A																									
B																									
C		6			5					4				3					2					1	
D																									
E																									
F																									
G		7			8					9				10					11					12	
H																									
J																									
K																									
L		18			17					16				15					14					13	
M																									
N																									
O																									
P		19			20					21				22					23					24	
Q																									
R																									
S																									
T		30			29					28				27					26					25	
U																									
V																									
W																									
X		31			32					33				34					35					36	
Y																									
Z																									

RCV 58.09.060 (2) requires the following information on this form: an accurate description and location, in reference to the corner position, of all monuments and accessories (a) found at the corner and (b) placed or replaced at the corner; (c) basis of bearings used to describe or locate such monuments or accessories; and (d) corollary information that may be helpful to relocate or identify the corner position.

SPACE FOR ADDITIONAL COMMENT:

MARK THE CORNER LOCATION ON THE DIAGRAM BELOW AND FILL IN THE CORNER CODE BLANK ON THE OTHER SIDE:

(1) For corners located at the intersection of two lines (Section corners, quarter corners and sixteenth corners):

(a) the corner code is the alpha-numeric coordinate from the diagram below that corresponds to the appropriate intersection of lines.

(2) For corners that are not located at the intersection of two lines (Meander corners, DLC's, HES's, reservation boundaries, mining claims, etc.):

(a) For corners that are on one line only the corner code is the line designation and the related line segment; i.e., a corner on line 5 between "B" and "C" is designated BC-5.

(b) For corners that are between lines the corner code is both line segments; i.e., a corner in the SE1/4 of the SE1/4 of section 18 is designated MN-4-5.

	1	2	3	4	5	6	7	8	9	10	11	12	13	14	15	16	17	18	19	20	21	22	23	24	25
A																									
B																									
C																									
D																									
E																									
F																									
G																									
H																									
J																									
K																									
L																									
M																									
N																									
O																									
P																									
Q																									
R																									
S																									
T																									
U																									
V																									
W																									
X																									
Y																									
Z																									

RCV 58.09.060 (2) requires the following information on this form: an accurate description and location, in reference to the corner position, of all monuments and accessories (a) found at the corner and (b) placed or replaced at the corner; (c) basis of bearings used to describe or locate such monuments or accessories; and (d) corollary information that may be helpful to relocate or identify the corner position.

SPACE FOR ADDITIONAL COMMENT:

MARK THE CORNER LOCATION ON THE DIAGRAM BELOW AND FILL IN THE CORNER CODE BLANK ON THE OTHER SIDE:

(1) For corners located at the intersection of two lines (Section corners, quarter corners and sixteenth corners):

(a) The corner code is the alpha-numeric coordinate from the diagram below that corresponds to the appropriate intersection of lines.

(2) For corners that are not located at the intersection of two lines (Meander corners, D.C.'s, H.E.S.'s, reservation boundaries, mining claims, etc.):

(a) For corners that are on one line only the corner code is the line designation and the related line segment; i.e., a corner on line 5 between "B" and "C" is designated BC-5.

(b) For corners that are between lines the corner code is both line segments; i.e., a corner in the SE1/4 of the SE1/4 of section 18 is designated MN-4-5.

1 2 3 4 5 6 7 8 9 10 11 12 13 14 15 16 17 18 19 20 21 22 23 24 25

A																								
B																								
C		6			5					4				3				2				1		
D																								
E																								
F																								
G		7			8					9				10				11				12		
H																								
J																								
K																								
L		18			17					16				15				14				13		
M																								
N																								
P		19			20					21				22				23				24		
Q																								
R																								
S																								
T		30			29					28				27				26				25		
U																								
V																								
W																								
X		31			32					33				34				35				36		
Y																								
Z																								

RCW 58.09.060 (2) requires the following information on this form: an accurate description and location, in reference to the corner position, of all monuments and accessories (a) found at the corner and (b) placed or replaced at the corner; (c) basis of bearings used to describe or locate such monuments or accessories; and (d) corollary information that may be helpful to relocate or identify the corner position.

SPACE FOR ADDITIONAL COMMENT:

MARK THE CORNER LOCATION ON THE DIAGRAM BELOW AND FILL IN THE CORNER CODE BLANK ON THE OTHER SIDE.

(1) For corners located at the intersection of two lines (Section corners, quarter corners and sixteenth corners):

(a) The corner code is the alpha-numeric coordinate from the diagram below that corresponds to the appropriate intersection of lines.

(2) For corners that are not located at the intersection of two lines (Meander corners, DLC's, HES's, reservation boundaries, mining claims, etc.):

(a) For corners that are on one line only the corner code is the line designation and the related line segment; i.e., a corner on line 5 between "B" and "C" is designated BC-5.

(b) For corners that are between lines the corner code is both line segments; i.e., a corner in the SE1/4 of the SE1/4 of section 18 is designated MN-4-5.

	1	2	3	4	5	6	7	8	9	10	11	12	13	14	15	16	17	18	19	20	21	22	23	24	25
A																									
B																									
C																									
D																									
E																									
F																									
G																									
H																									
J																									
K																									
L																									
M																									
N																									
O																									
P																									
Q																									
R																									
S																									
T																									
U																									
V																									
W																									
X																									
Y																									
Z																									

RCM 58.09.060 (2) requires the following information on this form: an accurate description and location, in reference to the corner position, of all monuments and accessories (a) found at the corner and (b) placed or replaced at the corner; (c) basis of bearings used to describe or locate such monuments or accessories; and (d) corollary information that may be helpful to relocate or identify the corner position.

SPACE FOR ADDITIONAL COMMENT:

BOOK 156 PAGE 579

STATE OF OREGON)
) ss:
County of Multnomah)

On this day personally appeared before me Patli Perigo to me
known to be the acting Manager, Real Property Management, Bonneville
Power Administration, who subscribed to and executed the within and foregoing
instrument and acknowledged that she signed the same as her free and voluntary act and
deed for the uses and purposes therein mentioned.

GIVEN under my hand and official seal this 8th day of April, 1996.

Mary Kathleen O'Neal
Notary Public for Oregon

(SEAL)

Aug. 16, 1999
My Commission expires:

