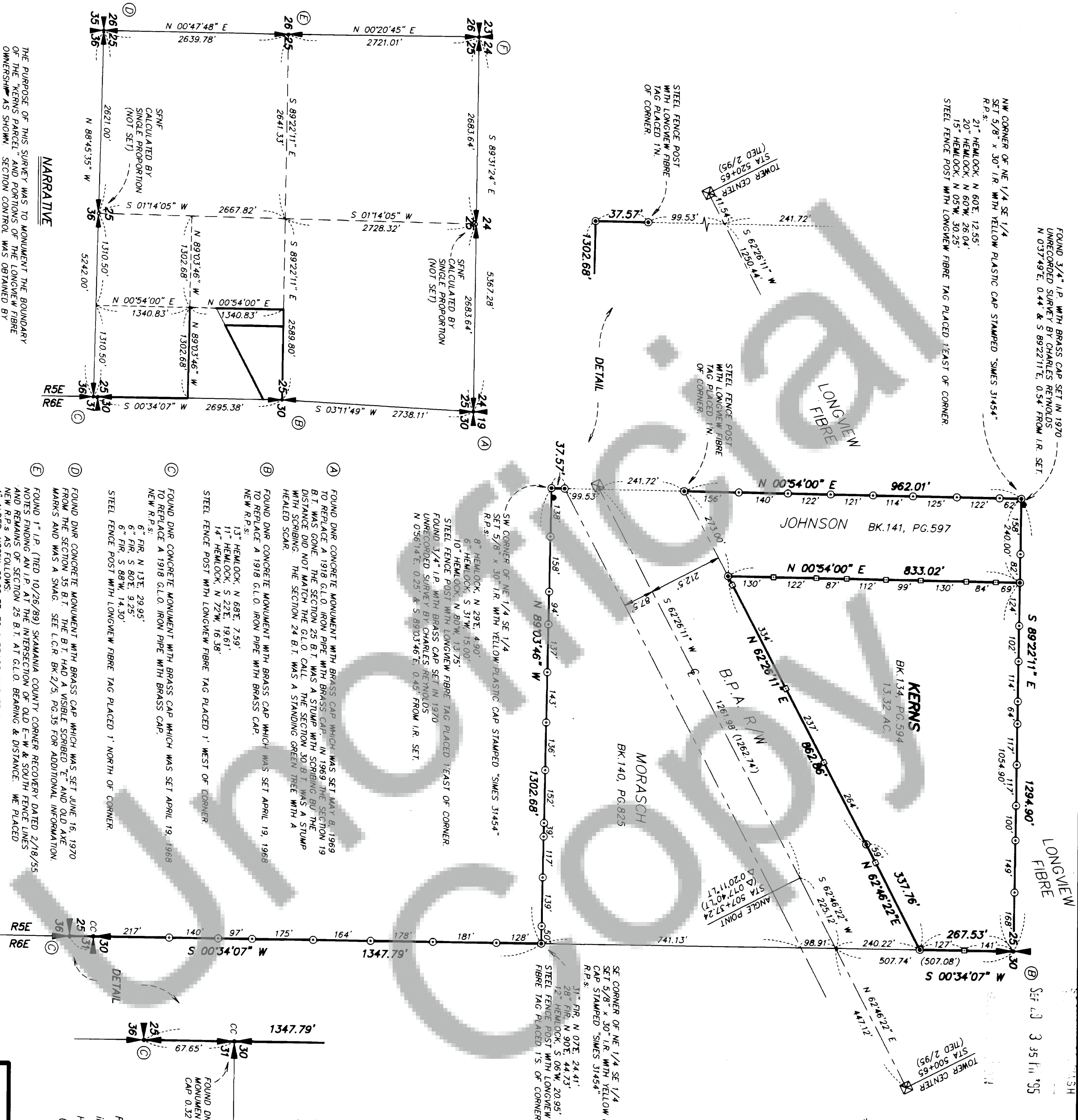


FOUND 3/4" I.P. WITH BRASS CAP SET IN 1970
UNRECORDED SURVEY BY CHARLES REYNOLDS
N 037°49' E, 0.44' & S 89°22'11" E, 0.54' FROM I.R. SET

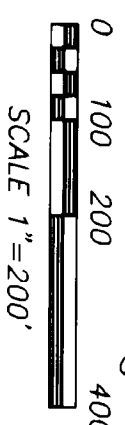
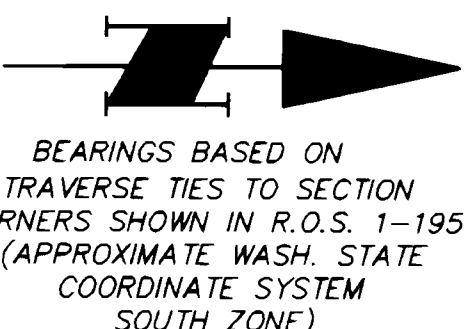
NW CORNER OF NE 1/4 SE 1/4
SET 5/8" x 30" I.R. WITH YELLOW PLASTIC CAP STAMPED "SMES 31454"
R.P.s:
21" HEMLOCK, N 60°E, 12.55'
20" HEMLOCK, N 60°W, 26.04'
15" HEMLOCK, N 05°W, 30.25'
STEEL FENCE POST WITH LONGVIEW FIBRE TAG PLACED 1' EAST OF CORNER.



IN THE NE 1/4 SE 1/4 AND
THE SE 1/4 SE 1/4 OF
SECTION 25, T2N, R5E, W.M.
SKAMANIA COUNTY, WA.

DEED REFERENCE

SLOAN TO KERNS
BK.131, PG.594
RECORDED 4/14/93

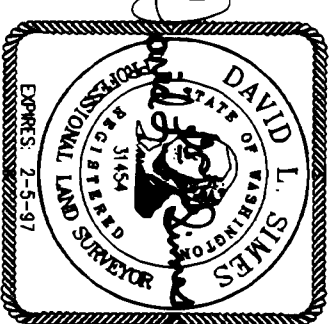


LEGEND

- MONUMENT AS NOTED
- SET 1/2" x 24" IRON REBAR WITH YELLOW PLASTIC CAP STAMPED "SMES 31454" WITH STEEL FENCEPOST SET ALONGSIDE UNLESS NOTED OTHERWISE
- ▣ STEEL FENCE POST SET ON PROPERTY LINE
- 1/2" DIA x 6 FT. FIBERGLASS POST ON LINE
- () RECORD DATA
- R.O.S. = RECORD OF SURVEY
- SNF = SEARCHED FOR NOT FOUND
- DNR = DEPARTMENT OF NATURAL RESOURCES
- GLO = GENERAL LAND OFFICE
- LOR = LAND CORNER RECORD
- R.P. = REFERENCE POINTS ARE 5/8" IRON RODS WITH YELLOW PLASTIC CAP STAMPED "HAGEDORN, INC." SET APPROX. ONE FOOT IN FRONT OF THE TREE NOTED (TREE USED ONLY TO NAIL REFERENCE TAG TO)

SURVEYOR'S CERTIFICATE

This map correctly represents a survey made by me or under my direction in conformance with the requirements of the Survey Recording Act at the request of SCOT KERNS AND LONGVIEW FIBRE CO. in MARCH, 1995



AUDITOR'S CERTIFICATE

Filed for record this 29th day of September, 1998 at 8:35 PM. in Book 13 of surveys at Page 202 at the request of Hagedorn, Inc. (Signed) Deputy County Auditor

NOTE: Hagedorn, Inc. makes no warranties as to matters of unwritten title such as acquiescence, estoppel, adverse possession, etc.

HAGEDORN, INC.

1924 Broadway Vancouver, Wa. 98663
Ph: (360) 696-4428 (503) 283-6778

SCALE: 1"=200'
DATE: 3/27/95
JOB NO: 95-011
CALC. BY: DLS
DRAWN BY: CC
CHECKED BY:
SHEET 1 OF 1

NARRATIVE

THE PURPOSE OF THIS SURVEY WAS TO MONUMENT THE BOUNDARY OF THE "KERN'S PARCEL" AND PORTIONS OF THE LONGVIEW FIBRE OWNERSHIP AS SHOWN. SECTION CONTROL WAS OBTAINED BY RUNNING A SERIES OF CLOSED RANDOM TRAVERSE CIRCUITS TO THE EXISTING MONUMENTATION IN SECTION 25. CORNER MONUMENTS WERE PLACED BY RADIAL STAKEOUT AND INTERMEDIATE POINTS ON LINES WERE OFFSET FROM THE ABOVE MENTIONED RANDOM CONTROL POINTS. SURVEY EQUIPMENT USED CONSISTED OF A 5-SECOND "TOTAL STATION INSTRUMENT" WITH ELECTRONIC DATA COLLECTOR.

- (A) FOUND DNR CONCRETE MONUMENT WITH BRASS CAP WHICH WAS SET MAY 8, 1969 TO REPLACE A 1918 G.L.O. IRON PIPE WITH BRASS CAP. IN 1969 THE SECTION 19 B.T. WAS GONE. THE SECTION 25 B.T. WAS A STUMP WITH SCORING BUT THE DISTANCE DID NOT MATCH THE G.L.O. CALL. THE SECTION 30 B.T. WAS A STUMP WITH SCORING. THE SECTION 24 B.T. WAS A STANDING GREEN TREE WITH A HEALED SCAR.
- (B) FOUND DNR CONCRETE MONUMENT WITH BRASS CAP WHICH WAS SET APRIL 19, 1968 TO REPLACE A 1918 G.L.O. IRON PIPE WITH BRASS CAP.
NEW R.P.s:
13" HEMLOCK, N 68°E, 7.59'
11" HEMLOCK, S 22°E, 19.61'
14" HEMLOCK, N 72°W, 16.38'
- (C) FOUND DNR CONCRETE MONUMENT WITH BRASS CAP WHICH WAS SET APRIL 19, 1968 TO REPLACE A 1918 G.L.O. IRON PIPE WITH BRASS CAP.
NEW R.P.s:
6" FIR, N 13°E, 29.95'
6" FIR, S 80°E, 9.25'
6" FIR, S 88°W, 14.30'
- (D) FOUND DNR CONCRETE MONUMENT WITH BRASS CAP WHICH WAS SET JUNE 16, 1970 FROM THE SECTION 35 B.T. THE B.T. HAD A VISIBLE SCORING "E" AND OLD AXE MARKS AND WAS A SWAG. SEE L.C.R. BK.2/5, PG.35 FOR ADDITIONAL INFORMATION.
- (E) FOUND 1" I.P. (TIED 10/26/89) SKAMANIA COUNTY CORNER RECOVERY DATED 2/18/55. NOTES FINDING AN I.P. AT THE INTERSECTION OF OLD E-W & SOUTH FENCE LINES AND REMAINS OF SECTION 25 B.T. AT G.L.O. BEARING & DISTANCE. WE PLACED NEW R.P.s AS FOLLOWS:
4" ALDER N88°W, 32.68 FT. TO A BRASS WASHER TACKED IN A BASE BLAZE
6" ALDER N44°W, 29.18 FT. TO A BRASS WASHER TACKED IN A BASE BLAZE
6" ALDER, S16°W, 29.26 FT. TO A BRASS WASHER TACKED IN A BASE BLAZE
- (F) FOUND 1" ALUMINUM I.P. WITH 3" ALUMINUM DNR CAP (SEE STATE OF WASHINGTON, DEPT. OF NATURAL RESOURCES SURVEY, MAP NO.568 FOR DOCUMENTATION).