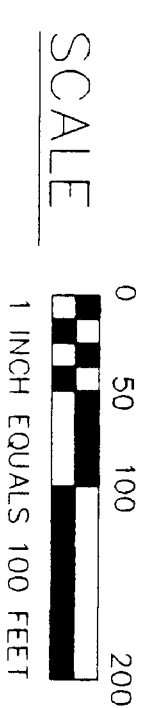


FILED  
SKAMM  
BY  
APR 25 4 44 PM '95  
ADDITOR  
GARY H. OLSON

SURVEY FOR  
SKAMANIA COUNTY  
IN NW 1/4 NE 1/4,  
SECTION 16, T3N, R10E, W.M.



- FOUND D.N.R. CONCRETE MONUMENT AS NOTED AND RELATED R.P.'S AS NOTED
- CORNER OF RECORD
- ⊗ SET 3/4" IRON ROD WITH YELLOW PLASTIC CAP (YPC)
- ( ) PLAT CALL - D.N.R.

# SURVEYOR'S CERTIFICATE

This map correctly represents a survey made by me or under my direction in conformance with the requirements of the Survey Recording Act at the request of SKAMANIA COUNTY in MARCH, 1995

# AUDITOR'S CERTIFICATE

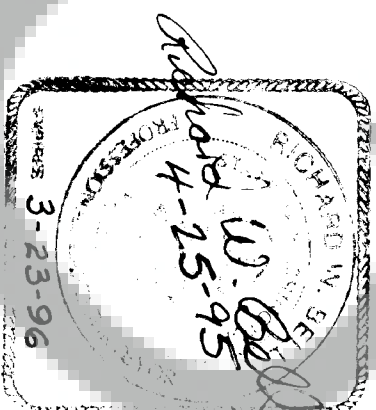
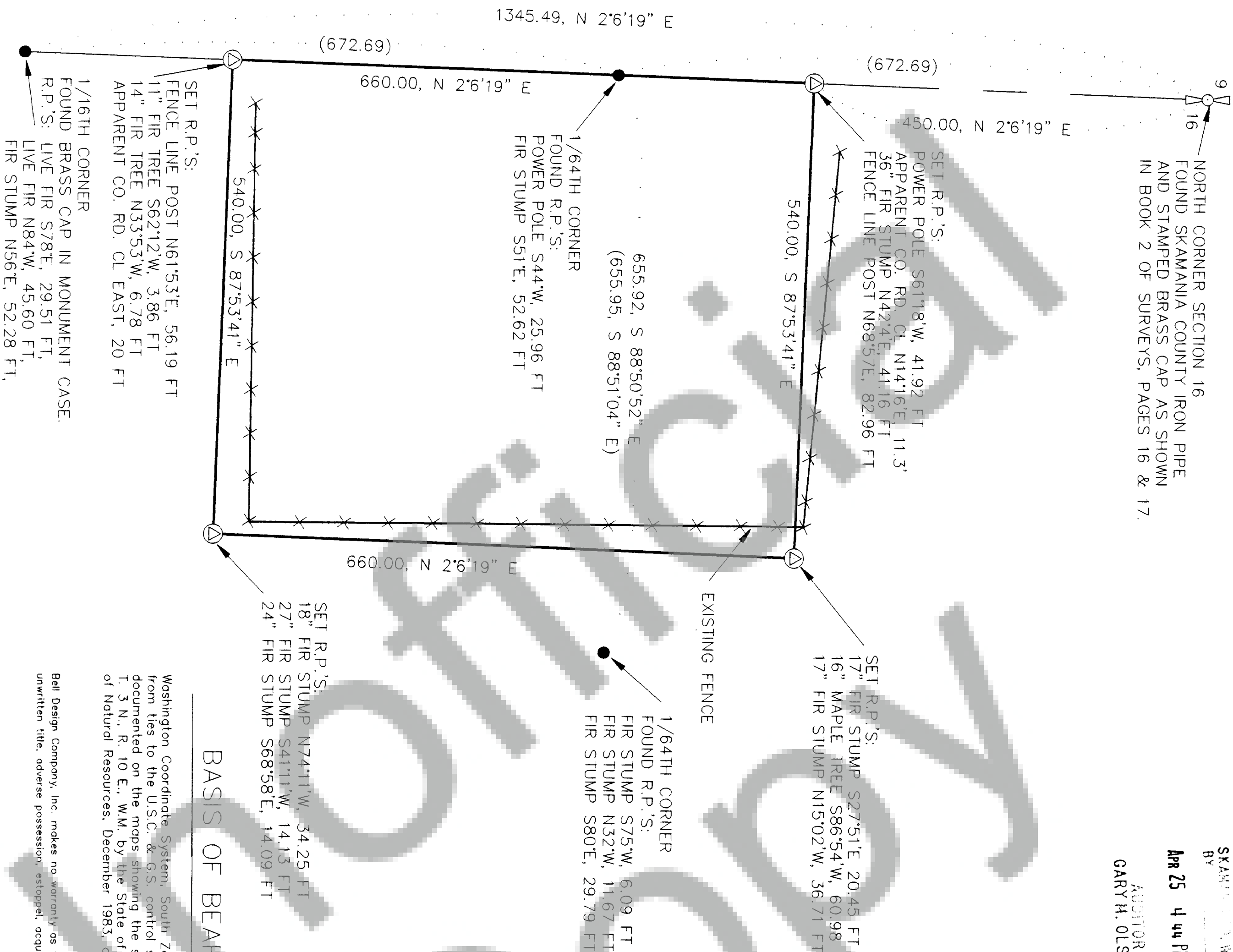
Filed for record this 25<sup>th</sup> day of April, 1995 at 4:44 pm  
in Book 3 of surveys at page 187 at the request of  
Bell Design Company, Inc.  
(Signed) Deputy B. Sherry  
(Deputy County Auditor)

# NARRATIVE

A closed traverse was made connecting the north quarter corner to the NW 1/4 SW 1/4 & NE corner of the SW 1/4 NE 1/4 of the Section 16. The location of these corners is documented on a State of Washington, Department of Natural Resources map showing the survey of Section 16, T. 3 N. R. 10 E., W.M. prepared December 1983 and stamped No. 483. A closure of 1.64793 was measured using a 5" total station and related equipment and then Compass Rule adjusted.

## LEGAL DESCRIPTION OF PREMISES

Commencing at the quarter corner between Section 9 and 16 of Township 3 North, Range 10 East, W.M., as marked by a County Engineer's brass monument. Thence south along the west line of the NW1/4NE1/4 of above-noted Section for a distance of 450 feet to the true point of beginning. Thence from the true point of beginning south along said west line a distance of 660 feet; thence east a distance of 540 feet; thence north parallel with west line a distance of 660 feet; thence west 540 feet to point of beginning. The tract described contains 8.18 acres, more or less, including right of way for county road. Subject to easement for right of way for county road heretofore granted under application No. 1171.



REV	DATE	DESCRIPTION	BY
1	2/22/95	CALCULATED	SVB
1	3/2/95	DRAWN	DAB
1	3/2/95	CHECKED	RWB
1	3/26/95	ADD 40' EAST	DAB

Washington Coordinate System South Zone Data as derived from ties to the U.S.C. & G.S. control station "Brought" and documented on the maps showing the survey of Section 16, T. 3 N., R. 10 E., WM. by the State of Washington, Department of Natural Resources, December 1983, and Stamped No. 483

Bell Design Company, Inc. makes no warranty as to matters of unwritten title, adverse possession, estoppel, acquiescence, etc.

SHEET: 1 OF 1  
PROJECT: 95B03  
DATE: April 4, 1995



**BELL DESIGN**  
**COMPANY**  
 ENGINEERING SURVEYING

P.O.B. 1990, WHITE SALMON, WA. 98672 (509) 453-3886