

121805 LAND CORNER RECORD

(THIS FORM PRESCRIBED BY THE PUBLIC LAND SURVEY OFFICE, DEPARTMENT OF NATURAL RESOURCES, PURSUANT TO RCW 58.09. ALPHA-NUMERIC INDEX DIAGRAM ON THE BACK.)

BOOK 148 PAGE 646

FILED FOR RECORD
SKAMANIA CO. WASH
BY *Rory Trantow*

MAR 13 12 07 PM '95

P. Lowry
AUDITOR
GARY M. OLSON

CORNER INDEXING INFORMATION:

TWP 2 N RGE 6 E CORNER CODE Z-3
(Willamette Meridian) (See instructions on back of ICR)

ADDITIONAL IDENTIFIER: (e.g., BLM designation for the corner, street intersection, plat name, block, lot, etc.)

1/4 corner of Sec. 31, T2N, R6E and Sec. 6, T1N, R6E

COUNTY:

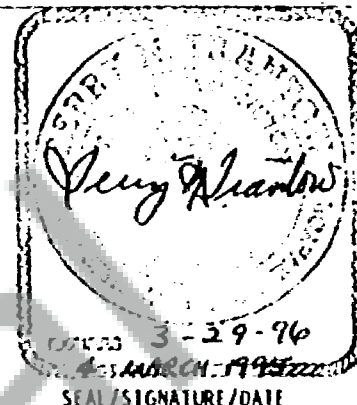
AUDITOR'S USE

LAND SURVEYOR INFORMATION: (or Public Officer as per RCW 58.09.090)

This corner record correctly represents work performed by me or under my direction in conformance with the Survey Recording Act.

COMPANY OR AGENCY: TRANTOW SURVEYING, INC.

ADDRESS: PO BOX 287 - 412 W. JEFFERSON
BINGEN, WA 98605-0287
509 / 493-3111



WASHINGTON PLANE COORDINATES: N:

E:

ORDER:

ZONE:

DATUM (Date of adjustment):

CORNER INFORMATION: Use the space below to provide the following information regarding the corner:
(1) Pertinent Corner History, (2) Evidence Found at the Corner, and (3) Corner Perpetuation Information. Please title and number the parts of your discussion accordingly. If additional space is needed use the back. (For (3), diagram the references. Also, provide the cross-reference to a map of record, if applicable, the surveyor's field book no./page no., and the date of work.) (See the back of this form for the requirements of the Survey Recording Act.)

GLO in 1859 set a post for this corner, from which bear:

8" alder, S61W, 61 links; 4" willow, S89E, 18 links

GLO in an 1883 retracement found no remains of 1/4 corner and set a post for the corner, from which bear: 40" fir, N04 1/2 E, 60 links;

8" dogwood, S84E, 96 links

GLO in a 1917 retracement found a post, greatly decayed, and replaced it with a 1" iron post, 3 ft. long, with brass cap, 26" deep, from which bear: Original fir, N76E, 33 ft. (50 lks); Original fir, S08E, 44.22 ft. (67 lks).

A 1961 survey by Marx Bros. of Gresham, Oregon found the GLO monument. Survey is dated 4/5/61, on file in the Skamania Co. Engineer vault.

DNR in 1969 found both BT's and set a concrete monument with brass cap by distance intersections. No GLO IP/BC was noted, and from their monument bear: 36" fir, N78E, 33 ft.; 14" alder, West, 18 ft.

2. Found DNR monument and remains of rusted Skamania Co. location post.

3. Also found GLO IP/BC 4" below the ground, marked as shown, from which bear:

48" rotted D-fir stump, N78E, 32.29 ft. to face with visible scribing

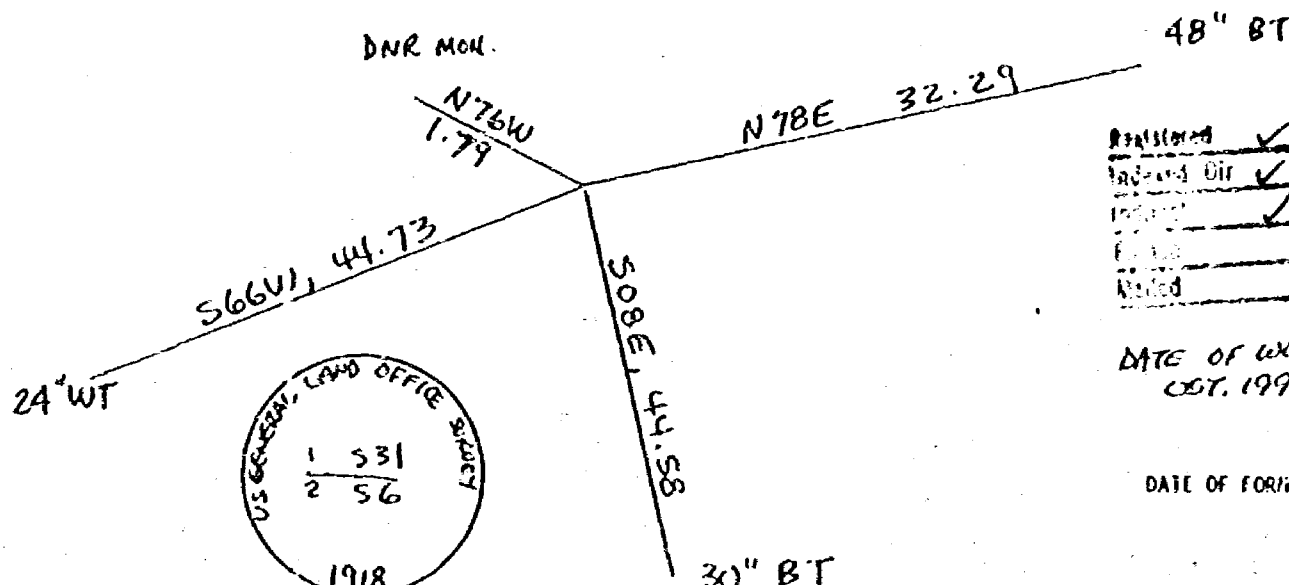
30" rotted D-fir stump, S08E, 44.58 ft. to face with visible scribing

24" D-fir, S66W, 44.73 ft. to face on root collar scribed WT

DNR monument, N76W, 1.79 ft. DNR witness tree not found.

Corner lies approximately 40 feet South of an old east-west logging road. I held the GLO IP/BC as the correct location for the present survey. This document supercedes one inadvertently filed in Volume 316 at Page 639 of Land Corner Records, Klickitat Co. Auditor on 11/22/94.

NO SCALE
MAG. COMPASS BEARINGS
(22° E DECL.)



Revised
Added
Deleted

DATE OF WORK
OCT. 1994

DATE OF FORM: 2/92

MARK THE CORNER LOCATION ON THE DIAGRAM BELOW AND FILL IN THE CORNER CODE BLANK ON THE OTHER SIDE:

(1) For corners located at the intersection of two lines (Section corners, quarter corners and sixteenth corners):

(a) The corner code is the alpha-numeric coordinate from the diagram below that corresponds to the appropriate intersection of lines.

(2) For corners that are not located at the intersection of two lines (Meander corners, D.C.'s, HES's, reservation boundaries, mining claims, etc.):

(a) For corners that are on one line only the corner code is the line designation and the related line segment; i.e., a corner on line 5 between "B" and "C" is designated BC-5.

(b) For corners that are between lines the corner code is both line segments; i.e., a corner in the SE1/4 of the SE1/4 of section 18 is designated KN-4-5.

	1	2	3	4	5	6	7	8	9	10	11	12	13	14	15	16	17	18	19	20	21	22	23	24	25
A																									
B																									
C																									
D																									
E																									
F																									
G																									
H																									
J																									
K																									
L																									
M																									
N																									
O																									
P																									
Q																									
R																									
S																									
T																									
U																									
V																									
W																									
X																									
Y																									
Z																									

RCV 58.09.060 (2) requires the following information on this form: an accurate description and location, in reference to the corner position, of all monuments and accessories (a) found at the corner and (b) placed or replaced at the corner; (c) basis of bearings used to describe or locate such monuments or accessories; and (d) corollary information that may be helpful to relocate or identify the corner position.

SPACE FOR ADDITIONAL COMMENT: