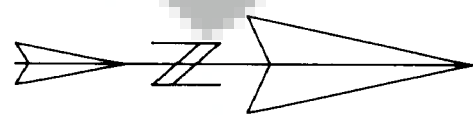
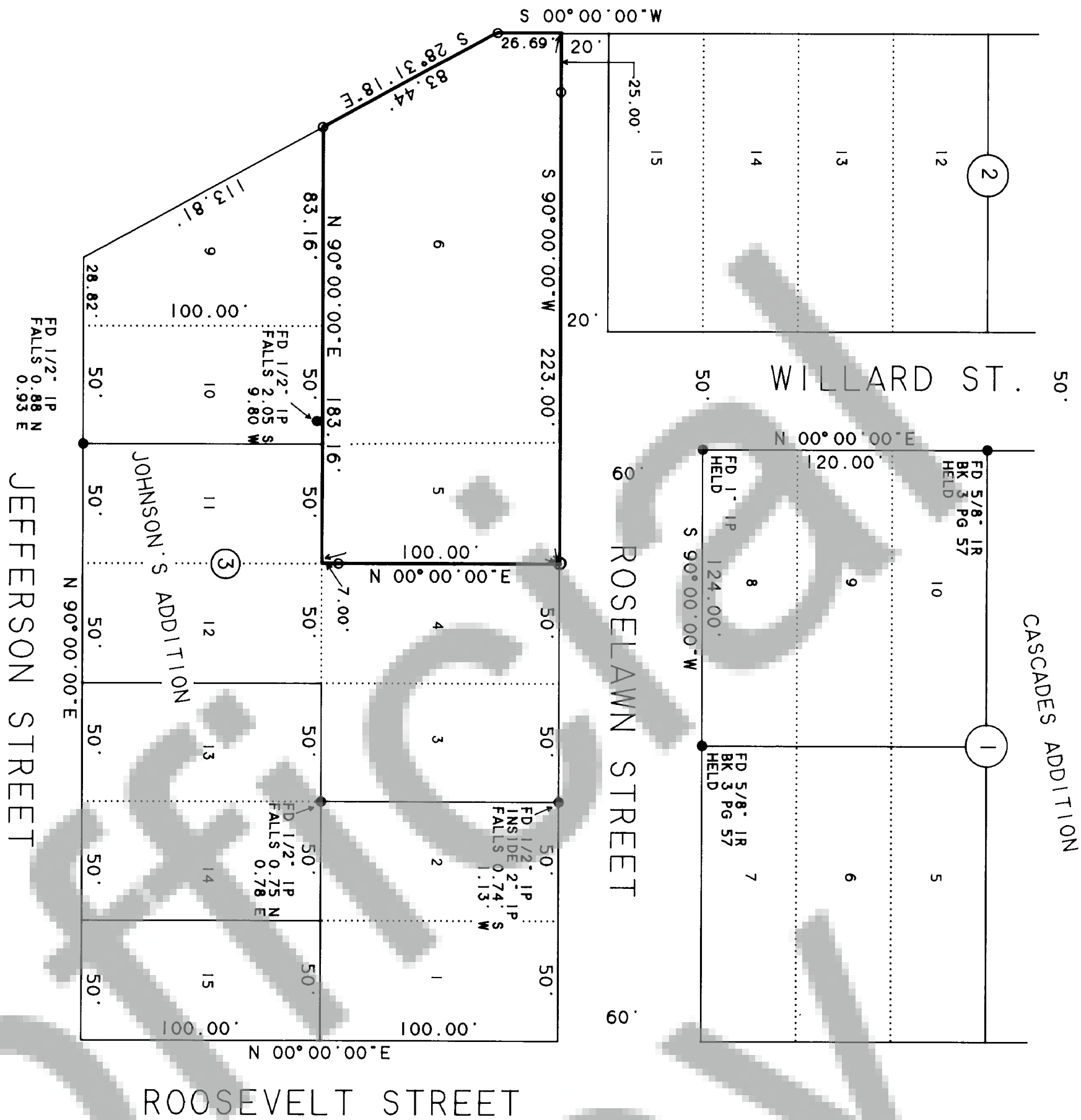
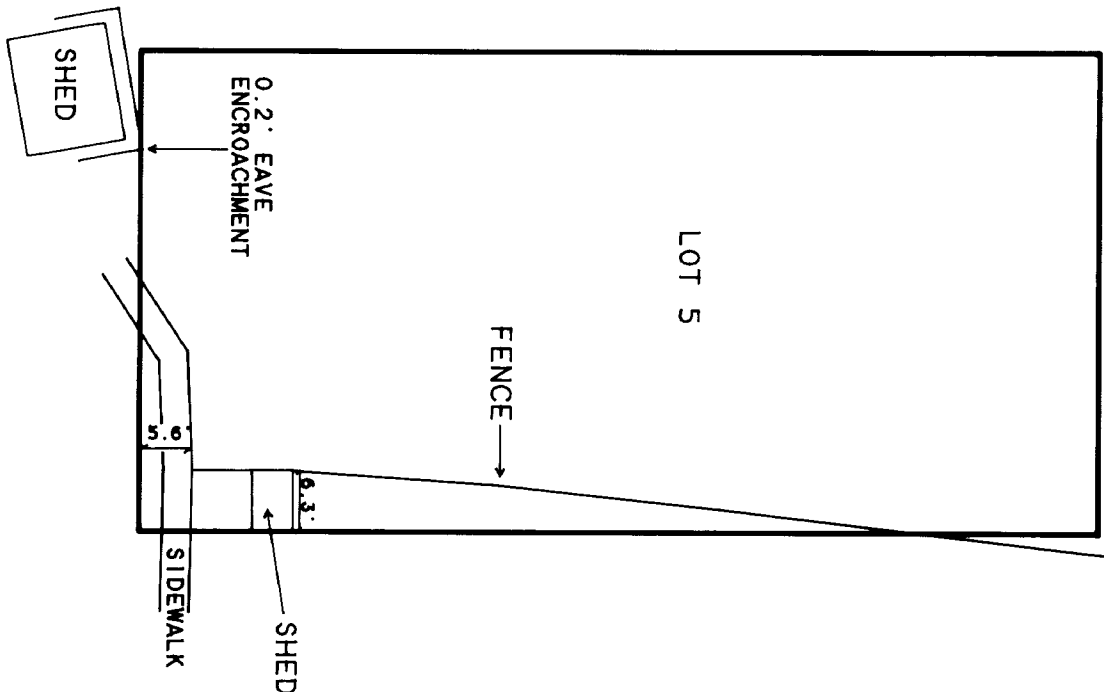


FEB 21 10 21 AM '95

CASCADES ADDITION



SCALE 1" = 50 FEET



LOT 5 DETAIL SHOWING ENCROACHMENTS
SCALE 1" = 20 FEET

SURVEYOR'S CERTIFICATE

THIS MAP CORRECTLY REPRESENTS A SURVEY MADE BY ME OR UNDER MY DIRECTION IN CONFORMANCE WITH THE REQUIREMENTS OF THE SURVEY RECORDING ACT AT THE REQUEST OF STEPHEN AND RITA TIDYMAN IN JANUARY, 1995.

Kevin Dowd
KEVIN DOWD PLS 29288

AUDITOR'S CERTIFICATE

FILED FOR RECORD THIS 21st DAY OF Feb 1995 AT THE REQUEST OF WYEAST SURVEYS, AT PAGE 183

Wyeast M. Olson by D. Stearns
COUNTY AUDITOR

LEGAL DESCRIPTION: BOOK 147, PAGE 826
SKAMANIA COUNTY DEED RECORDS

BASIS OF BEARING: BOOK 3 OF SURVEYS, PAGE 57

- SET 5/8" IRON ROD WITH YELLOW PLASTIC CAP STAMPED
- WYEAST SURVEYS PLS 29288

- FOUND MONUMENT AS NOTED

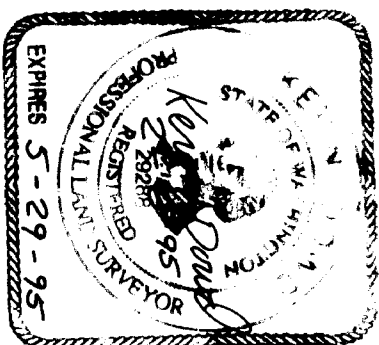
THIS SURVEY WAS CONDUCTED IN JANUARY 1995 BY RANDOM TRAVERSE USING A 5" TOTAL STATION. THIS SURVEY MEETS THE MINIMUM STANDARDS FOR SURVEYS AS PER WAC 332-130-090.

MONUMENTS FOUND IN BLOCK 3 WERE OF QUESTIONABLE ORIGIN AND THEREFORE NOT HELD. MONUMENTS WERE FOUND AND HELD FROM A SURVEY OF BLOCK 1 CASCADES ADDITION. RECORDED AS BOOK 3 OF SURVEYS PAGE 57 PLAT ANGLES AND DISTANCES WERE THEN HELD TO ESTABLISH THE LOT CORNERS OF BLOCK 3 (THE NORTH HALF OF BLOCK 3 JOHNSON'S ADDITION WAS PLATTED AT THE SAME TIME AS SAID BLOCK 1 AS PER BOOK A OF PLATS PAGE 62.) THIS RESOLUTION AGREES REASONABLY WELL WITH IMPROVEMENTS AND POSSESSION LINES IN THE BLOCK. AN ATTEMPT WAS MADE TO HOLD PLAT DATA FROM THE SOUTH LINE OF SECTION 36 AND THE WEST LINE OF THE SHEPARD DLC AS PER THE RESOLUTION OF BOOK 1 OF SURVEYS PAGE 132 BUT WAS NOT FOUND TO FIT MONUMENTS AND POSSESSION LINES AS WELL.

SURVEY

LOTS 5 AND 6, BLOCK 3 - JOHNSON'S ADDITION - SITUATED IN THE SOUTHEAST QUARTER OF SECTION 36 T3S NORTH, R7E EAST, W.M. IN THE CITY OF STEVENSON SKAMANIA COUNTY WASHINGTON

FOR: STEPHEN AND RITA TIDYMAN



WYEAST SURVEYS
KEVIN DOWD
4399 WOODWORTH DR.
MT HOOD, OR 97041
(503) 352-6065