

LAND CORNER RECORD

(THIS FORM PRESCRIBED BY THE PUBLIC LAND SURVEY OFFICE, DEPARTMENT OF NATURAL RESOURCES, PURSUANT TO RCW 58.09. ALPHA-NUMERIC INDEX DIAGRAM ON THE BACK.)

FILED FOR RECORD
SKAMANIA CO. WASH
BY *Bob Glaeser*

FEB 14 30 PM '94
J. Henry
AUDITOR
GARY H. OLSON

Corner Indexing Information:

TWP 1 N RGE 5 E Corner Code A-9
(Willamette Meridian)

ADDITIONAL IDENTIFIER: (e.g., BLM designation for the corner, street intersection, plat name, block, lot, etc.)

Northeast corner of Section 5, Township 1 North, Range 5 East, Willamette Meridian.

118648

BOOK 141 PAGE 234

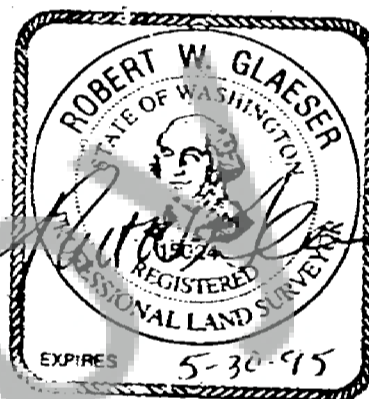
Skamania County Washington:

Land Surveyor Information: (or Public Officer as per RCW 58.09.090)

AUDITOR'S USE

This corner record correctly represents work performed by me or under by direction in conformance with the Survey Recording Act.

Company or agency:
Minister & Glaeser Surveying, Inc.
2208 E. Evergreen Blvd.
Vancouver, WA. 98661
Phone: (206) 694-3313
Fax: (206) 694-8410



Signature *Robert W. Glaeser*

Date: 1/21/94

Seal:

Washington Plane Coordinates: N:
Order: Zone:

E:

Datum (Date of adjustment):

Corner Information: Use the space below to provide the following information regarding the corner.

(1) Pertinent Corner History: The original survey was conducted by Deputy Surveyors, Lewis Van Vleet and John Newsom, under Contract No. 47, dated the 23rd day of April, 1859. The survey was conducted between April 26 and April 29, 1859. Set a post common to Sections 4, 5, 32, and 33, R.P.'s were as follows:
40" diameter Fir, South 15° East, 39 Links.
40" diameter Fir, North 55° East, 227 Links.
30" diameter Fir, North 44° West, 472 Links.
30" diameter Fir Stub, South 54° West, 147 Links.

In approximately 1910; Clark LaBarre found said Section Corner and Bearing Trees.

In 1968 a Game Department Monument was set at an an old fence corner; which is believed to be a perpetuation of LaBarre's position.

REGISTERED
INDEXED
FILED
FEB 14 1994
FBI - SEATTLE

BOOK 141 PAGE 235

In August of 1973, W.F. Hagedorn conducted a survey (Book 1, page 6, of Skamania County records), and found a State Game Department Concrete Monument and held for the Northeast corner of Section 5.

In January of 1974, Olson Engineering conducted a survey (Book 1, page 10, of Skamania County records), and found a State Game Department Concrete Monument and held for the Northeast corner of Section 5.

In April of 1990, W.F. Hagedorn conducted a survey (Book 3, page 41, of Skamania County records) held Game Department monument as the Northeast corner of Section 5. Again held said monument in Survey Book 3, page 207, of Skamania County records.

(2) Evidence Found at the Corner: No original evidence found. The position of this corner was calculated based on Hagedorn survey found in records of Skamania County, Survey Book 3, page 41. The Game Department monument was accepted as the corner based on reputation and use.

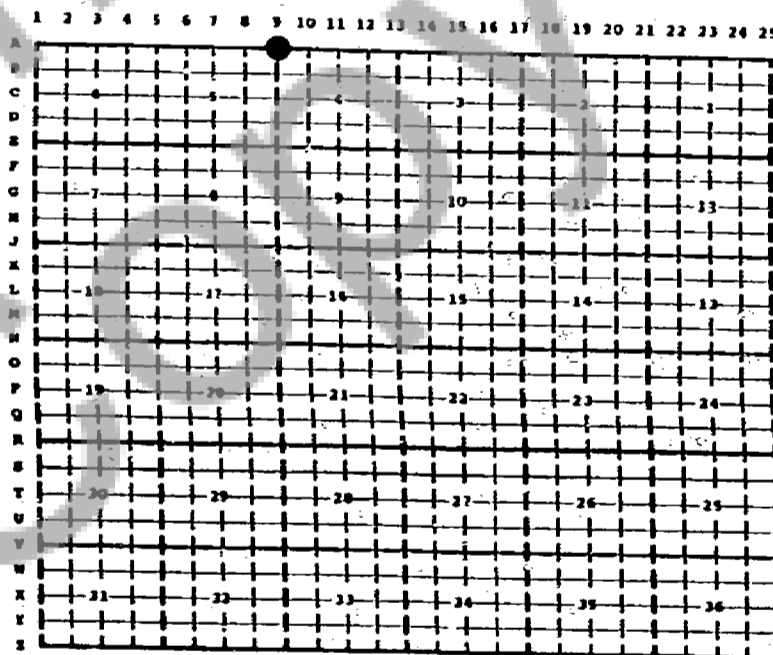
(3) Corner Perpetuation Information:

Surveys

Book 3, page 41
Book 3, page 73
Book 1, page 6
Book 1, page 10

Short Plats

Book 3, page 207



RCW 58.09.060 (2) requires the following information on this form: an accurate description and location, in reference to the corner position, of all monuments and accessories (a) found at the corner and (b) placed or replaced at the corner; (c) basis of bearings used to describe or locate such monuments or accessories; and (d) ancillary information that may be helpful to relocate or identify the corner position.

SPACE FOR ADDITIONAL COMMENTS:

IN SURVEY (BOOK 3, PAGE 41, OF SKAMANIA COUNTY RECORDS), SAID GAME DEPT. MONUMENT WAS REFERENCED AS FOLLOWS:

28" FIR, SOUTH 05° EAST, 25.70
26" FIR, SOUTH 69° WEST, 21.30
8" CASCARA, NORTH 68° WEST, 7.32

(DIST. TO BRASS WASHER TACKED IN BASE BLAZE)