

115412

BOOK 133 PAGE 178

LAND CORNER RECORD

(THIS FORM PRESCRIBED BY THE PUBLIC LAND SURVEY OFFICE, DEPARTMENT OF NATURAL RESOURCES, PURSUANT TO RCW 58.09. ALPHA-NUMERIC INDEX DIAGRAM ON THE BACK.)

BY Olson Engineering

JAN 29 5 10 PM '93

P. Lowry

GARY OLSON

CORNER INDEXING INFORMATION:TWP 1N RGE 5E CORNER CODE C-17
(Willamette Meridian) (See Instructions on back of LCR)

ADDITIONAL IDENTIFIER: (e.g., BLM designation for the corner, street intersection, plat name, block, lot, etc.)

EAST 1/4 CORNER SECTION 3COUNTY: SKAMANIA

AUDITOR'S USE

LAND SURVEYOR INFORMATION: (or Public Officer as per RCW 58.09.090)

This corner record correctly represents work performed by me or under my direction in conformance with the Survey Recording Act.

COMPANY OR AGENCY: OLSON ENGINEERING INC.
1111 BROADWAY
ADDRESS: VANCOUVER, WA 98660

1/28/93

WASHINGTON PLANE COORDINATES: N:

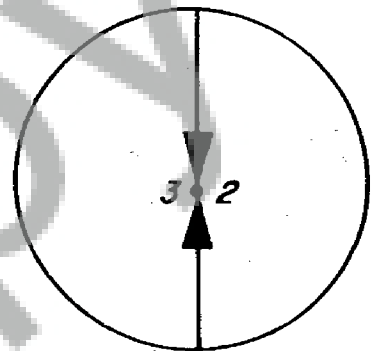
E:

ORDER:

ZONE:

DATUM (Date of adjustment):

CORNER INFORMATION: Use the space below to provide the following information regarding the corner:
 (1) Pertinent Corner History, (2) Evidence Found at the Corner, and (3) Corner Perpetuation Information. Please title and number the parts of your discussion accordingly. If additional space is needed use the back. (For (3), diagram the references. Also, provide the cross-reference to a map of record, if applicable, the surveyor's field book no./page no., and the date of work.) (See the back of this form for the requirements of the Survey Recording Act.)



The original corner post was established on June 3, 1859 by United States Deputy Surveyor, Lewis Van Vleet. Bearing trees were a 7" maple South 44° East, 23 links and a 40" fir North 78° West, 175 links. During record of survey 1-273 by Lawson Land Surveying, a 40" fir stump with a burned face and scribing was found. Mr. Lawson reestablished the corner from this stump. Found a 1" iron pipe with a Lawson brass cap.

MARK THE CORNER LOCATION ON THE DIAGRAM BELOW AND FILL IN THE CORNER CODE BLANK ON THE OTHER SIDE:

(1) For corners located at the intersection of two lines (Section corners, quarter corners and sixteenth corners):

(a) The corner code is the alpha-numeric coordinate from the diagram below that corresponds to the appropriate intersection of lines.

(2) For corners that are not located at the intersection of two lines (Meander corners, DLC's, HES's, reservation boundaries, mining claims, etc.):

(a) For corners that are on one line only the corner code is the line designation and the related line segment; i.e., a corner on line 5 between "B" and "C" is designated BC-5.

(b) For corners that are between lines the corner code is both line segments; i.e., a corner in the SE1/4 of the SE1/4 of section 18 is designated MM-4-5.

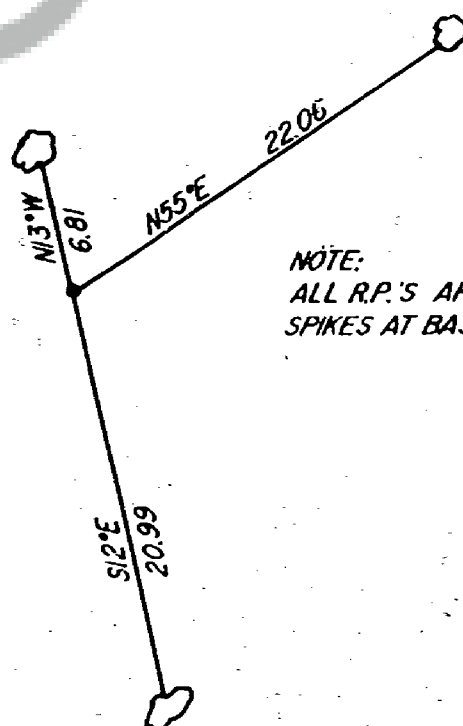
1 2 3 4 5 6 7 8 9 10 11 12 13 14 15 16 17 18 19 20 21 22 23 24 25

A																											
B																											
C		6			5				4				3				2										
D																											
E																											
F																											
G		7			8				9				10				11										
H																											
J																											
K																											
L		18			17				16				15				14										
M																											
N																											
O																											
P		19			20				21				22				23										
Q																											
R																											
S																											
T		30			29				28				27				26										
U																											
V																											
W																											
X		31			32				33				34				35										
Y																											
Z																											

RCV 58.09.060 (2) requires the following information on this form: an accurate description and location, in reference to the corner position, of all monuments and accessories (a) found at the corner and (b) placed or replaced at the corner; (c) basis of bearings used to describe or locate such monuments or accessories; and (d) corollary information that may be helpful to relocate or identify the corner position.

SPACE FOR ADDITIONAL COMMENT:

THE FOLLOWING ARE TAKEN FROM LAWSON SURVEY (1/273):



NOTE:
ALL R.P.'S ARE RAILROAD
SPIKES AT BASE OF TREE