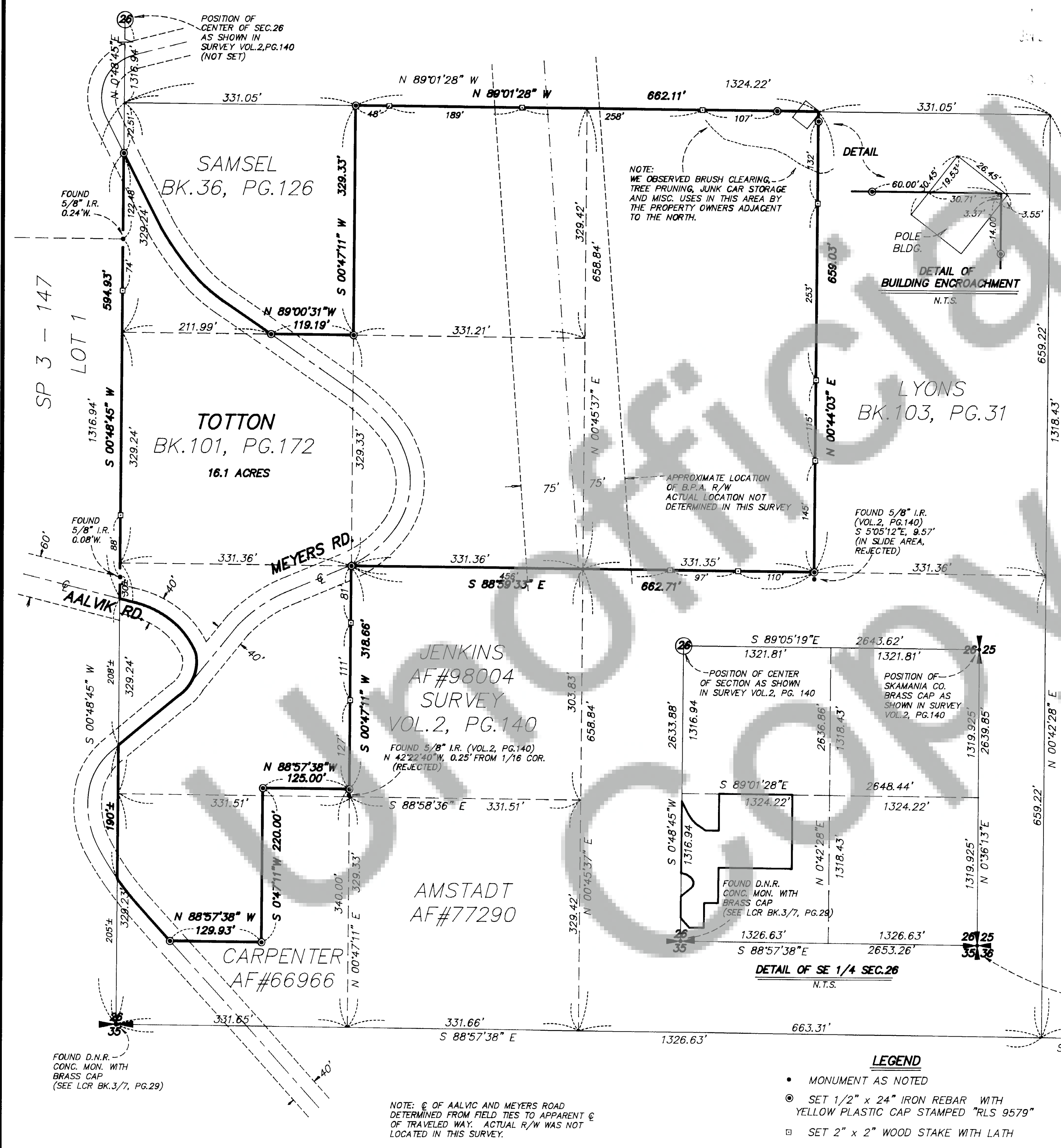


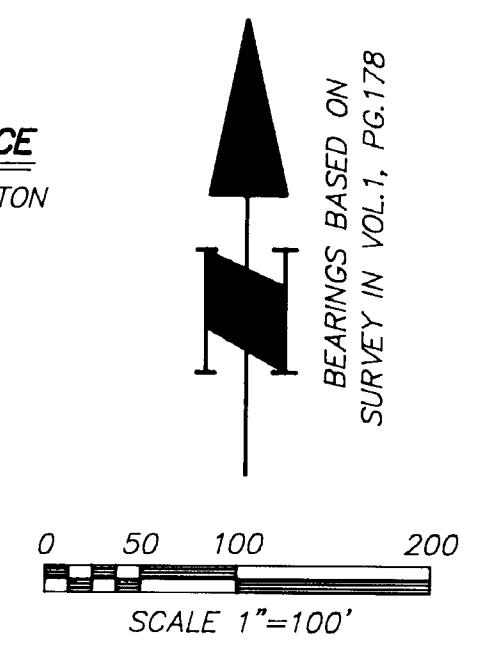
115333

# SURVEY

IN THE SW 1/4 SE 1/4  
OF SEC. 26, T3N, R7E, W.M.  
SKAMANIA COUNTY, WA.



**DEED REFERENCE**  
FINCKBONE TO TOTTON  
BK.101, PG.172



- Registered
- Indexed
- Indirect
- Filed
- Mailed

## NARRATIVE

THE PURPOSE OF THIS SURVEY WAS TO MONUMENT AND MARK THE BOUNDARIES OF THE "TOTTON TRACT" AS SHOWN HEREON. SECTION CONTROL WAS OBTAINED BY RUNNING A RANDOM CONTROL TRAVERSE BETWEEN THE SOUTH 1/4 COR. OF SEC.26 AND SKAMANIA CO. CONTROL MONUMENT 3637-4 WHICH WAS THEN ORIENTED TO THE SURVEY SHOWN IN VOL.1 OF SURVEYS AT PG.178. WE THEN RAN A CLOSED RANDOM TRAVERSE AROUND OUR CLIENT'S PROPERTY AND MADE RADIAL TIES TO APPARENT C. OF AALVIK AND MEYERS ROADS, ENCROACHMENTS AND FOUND MONUMENTS. THE CORNERS SHOWN AS SET HEREIN WERE STAKED RADIALLY FROM THE ABOVE MENTIONED RANDOM TRAVERSE POINTS. SURVEY EQUIPMENT USED CONSISTED OF A 10-SECOND "TOTAL STATION E.D.M." AND DATA COLLECTOR.

## SURVEYOR'S CERTIFICATE

This map correctly represents a survey made by me or under my direction in conformance with the requirements of the Survey Recording Act at the request of KEITH TOTTON in JULY, 19 92

WILLIAM F. HAGEDORN  
Certificate No. 9579

## AUDITOR'S CERTIFICATE

Filed for record this 21<sup>st</sup> day of Jan, 1993 at 1:32 P.m. in Book 3 of surveys at Page 107 at the request of Hagedorn, Inc.

(Signed)

P. Lowry  
(Deputy County Auditor)

## LEGEND

- MONUMENT AS NOTED
- SET 1/2" x 24" IRON REBAR WITH YELLOW PLASTIC CAP STAMPED "RLS 9579"
- SET 2" x 2" WOOD STAKE WITH LATH

NOTE: Hagedorn, Inc. makes no warranties as to matters of unwritten title such as acquiescence, estoppel, adverse possession, etc.

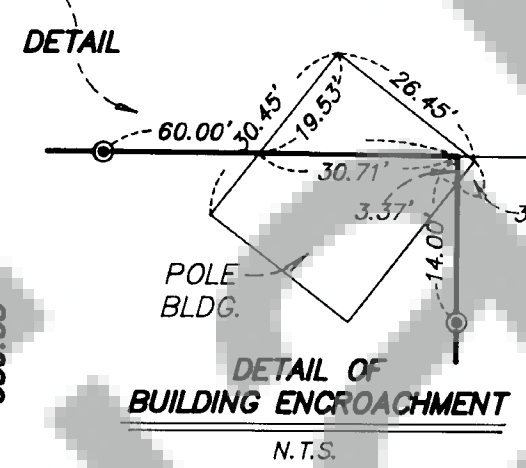
**HAGEDORN, INC.**  
1924 Broadway Vancouver, Wa. 98663  
Ph: (206) 696-4428 (503) 283-6778

SCALE: 1"=100'	JOB NO.: 92-173	DRAWN BY: CC
DATE: 7/30/92	CALC. BY: DLS	CHECKED BY: CEW

FOUND D.N.R. -  
CONC. MON. WITH  
BRASS CAP  
(SEE LCR BK.3/7, PG.29)

NOTE: C. OF AALVIK AND MEYERS ROAD  
DETERMINED FROM FIELD TIES TO APPARENT C.  
OF TRAVELED WAY. ACTUAL R/W WAS NOT  
LOCATED IN THIS SURVEY.

NOTE:  
WE OBSERVED BRUSH CLEARING,  
TREE PRUNING, JUNK CAR STORAGE  
AND MISC. USES IN THIS AREA BY  
THE PROPERTY OWNERS ADJACENT  
TO THE NORTH.



APPROXIMATE LOCATION  
OF B.P.A. R/W  
ACTUAL LOCATION NOT  
DETERMINED IN THIS SURVEY

FOUND 5/8" I.R.  
(VOL.2, PG.140)  
S 5'05"12"E, 9.57'  
(IN SLIDE AREA,  
REJECTED)

FOUND 5/8" I.R. (VOL.2, PG.140)  
N 42'22"40"W, 0.25' FROM 1/16 COR.  
(REJECTED)

FOUND D.N.R.  
CONC. MON. WITH  
BRASS CAP  
(SEE LCR BK.3/7, PG.29)

POSITION OF  
SKAMANIA CO.  
BRASS CAP AS  
CALC. FROM SKAMANIA  
CO. CONTROL PROJECT  
CRP #74-26