

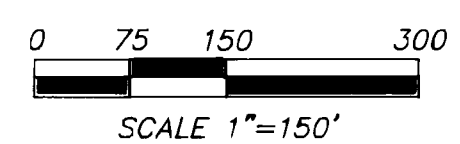
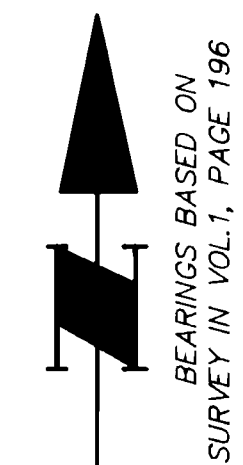
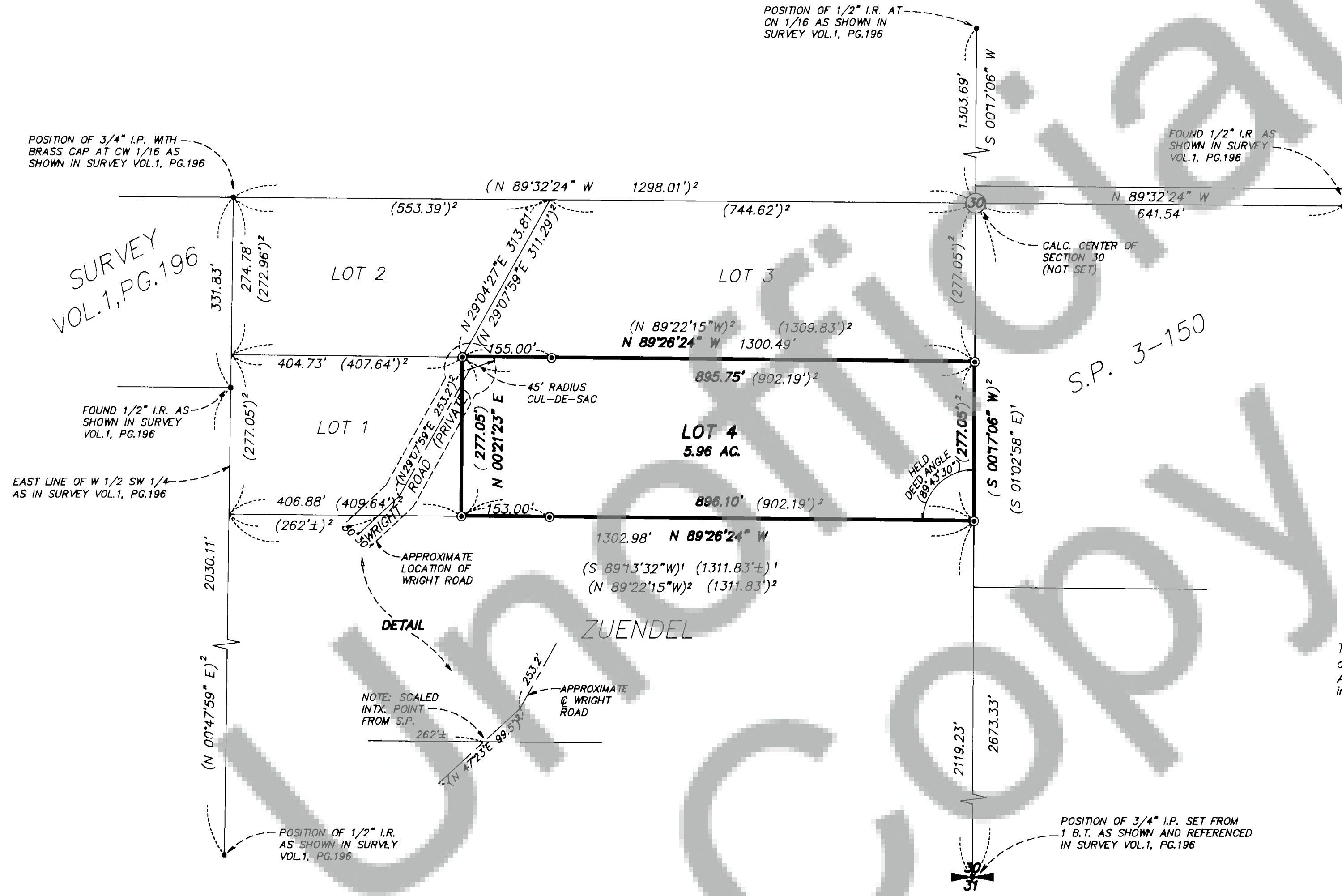
95
Page
Surveys
3
Book

DEED REFERENCE

VANPORT MANUFACTURING, INC.
TO WRIGHT
(JULY 16, 1986) BK.101, PG.893

SURVEY

OF LOT 4 OF THE STANLEY WRIGHT
SHORT PLAT (SP 2-155)
IN THE NE 1/4 SW 1/4
OF SEC. 30, T2N, R5E, W.M.
SKAMANIA COUNTY, WA.



LEGEND

- MONUMENT AS NOTED
- ⊙ 1/2" IRON ROD WITH PLASTIC CAP SET
- ()' RECORD FROM DEED
- ()² RECORD FROM SP 2-155

NOTE: SET STEEL FENCE POSTS ALONGSIDE ALL CORNERS SET

SURVEYOR'S CERTIFICATE

This map correctly represents a survey made by me or under my direction in conformance with the requirements of the Survey Recording Act at the request of KEN FRIZZELL in FEBRUARY, 1992

(Signed & Sealed) William F. Hagedorn
Certificate No. 9579

1992
3-30-92

AUDITOR'S CERTIFICATE

Filed for record this 17th day of July, 1992 at 2:23 P.M. in Book 3 of surveys at Page 95 at the request of Hagedorn, Inc.

(Signed) V. Johnson
(Deputy County Auditor)

NOTE: Hagedorn, Inc. makes no warranties as to matters of unwritten title such as acquiescence, estoppel, adverse possession, etc.

NARRATIVE

THE PURPOSE OF THIS SURVEY WAS TO MONUMENT THE BOUNDARY OF LOT 4 OF THE STANLEY WRIGHT SHORT PLAT (SP 2-155). SECTION CONTROL WAS OBTAINED BY RUNNING A RANDOM TRAVERSE, CLOSED AND ORIENTED BETWEEN CORNERS RECOVERED FROM THE SURVEY SHOWN IN VOL. 1 OF SURVEYS AT PAGE 196, SKAMANIA COUNTY AUDITOR'S RECORDS. THE SOUTH LINE OF THE SHORT PLAT WAS CALCULATED BY USING THE DEED ANGLE AS SHOWN HEREON (WHICH CONFLICTS WITH THE BEARING SHOWN ON THE FACE OF THE SHORT PLAT). THE SW CORNER & NW CORNER OF LOT 4 WERE THEN CALCULATED AT PROPORTIONAL DISTANCES AS PER THE SHORT PLAT DATA. DUE TO A LACK OF MATHEMATICAL DATA ON THE FACE OF SP 2-155, "WRIGHT" ROAD IS SHOWN IN AN APPROXIMATE LOCATION OBTAINED BY SCALING (AND VERIFIED BY FIELD TIES TO THE EXISTING ROAD CENTERLINE). CORNERS SHOWN AS SET, WERE ESTABLISHED BY RADIAL STAKEOUT FROM THE ABOVE MENTIONED RANDOM TRAVERSE POINTS. SURVEY EQUIPMENT USED CONSISTED OF A ONE-SECOND TOTAL STATION E.D.M.

SCALE 1"=150'
DATE 2/20/92
JOB NO. 92-028
CALC. BY DLS
DRAWN BY CC
CHECKED BY BPT
SHEET 1 OF 1

HAGEDORN, INC.
1924 Broadway Vancouver, Wa.
98663
Ph: (206) 696-4428 (503) 283-6778