

102541

REFERENCE SURVEYS OF RECORD

HAGEDORN BOOK 1 PAGE 231
 MINISTER-GLAESER BOOK 2 PAGE 156
 TENNESON BOOK 1 PAGE 182
 TENNESON BOOK 1 PAGE 126

THETA ANGLE = $-1^{\circ}02'24''$ (AT NB-50)
DATUM AND BASIS OF BEARINGS
 LAMBERT CONFORMAL GRID PROJECTION
 OREGON NORTH ZONE
 GRID FACTOR AND MAPPING ANGLE
 DERIVED FROM U.S.C.E. COORDINATES
 FOR STATION NB-50
 X = 1624880.000
 Y = 721910.000
 GRID FACTOR = .9999232
 ELEV. FACTOR = .9999952
 SCALE FACTOR = .9999280
 ORIGIN OF BEARINGS = RECORD COURSE FROM
 NB-10W TO NB-11W AS DERIVED FROM
 U.S.C.E. COORDINATES

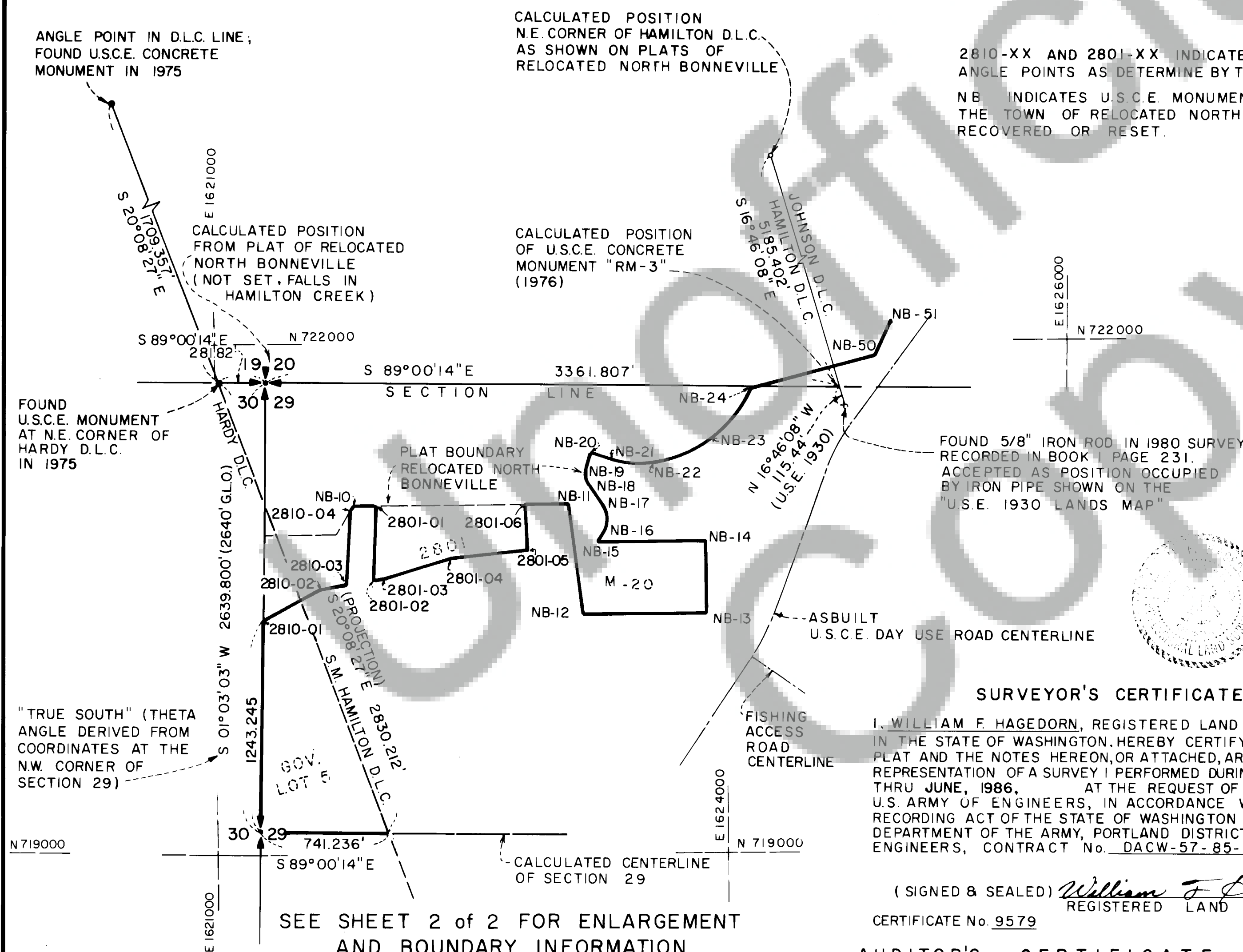
NARRATIVE: THIS SURVEY WAS MADE BETWEEN OCTOBER, 1984 AND JUNE, 1986 TO LOCATE AND MONUMENT THE SOUTH LINE OF THE TOWN OF NORTH BONNEVILLE IN SECTION 29, AND TO MONUMENT THE 1/4 CORNER BETWEEN SECTIONS 30:29 AND TO MONUMENT THE SOUTHEAST CORNER OF GOVERNMENT LOT 5 IN SECTION 29. THE BOUNDARIES OF THE TOWN OF NORTH BONNEVILLE WERE DETERMINED BY THE LEGAL DESCRIPTIONS FOR TRACTS 2801 AND 2810 AND BY THE PLATS OF RELOCATED NORTH BONNEVILLE. TRACTS 2801 AND 2810 HAD BEEN PREVIOUSLY MONUMENTED BY BOTH THE WASHINGTON STATE DEPARTMENT OF HIGHWAYS AND PRIVATE SURVEYORS AS NOTED. THE 1/4 CORNER BETWEEN SECTIONS 30:29 WAS CALCULATED DUE SOUTH (TRUE) OF THE SECTION CORNER COMMON TO SECTIONS 19, 20, 29, AND 30 AT RECORD (G.L.O.) DISTANCE (CONVERTED TO GRID). SINCE THE EAST 1/4 CORNER OF SECTION 29 FALLS IN THE COLUMBIA RIVER, THE EAST-WEST CENTERLINE OF SECTION 29 WAS CALCULATED AS A LINE PROJECTED FROM THE WEST 1/4 CORNER PARALLEL TO THE NORTH LINE OF SECTION 29. THE WEST LINE OF THE HAMILTON D.L.C. WAS PROJECTED FROM FOUND MONUMENTATION AS SHOWN. FIELD WORK CONFORMS TO N.O.A.A. 3rd ORDER CLASS 1 SPECIFICATIONS.

NOTE: COORDINATES AND DISTANCES TO .xxx FEET ARE FOR MATHEMATICAL PURPOSES ONLY AND ARE NOT INTENDED TO IMPLY ACCURACY OF SURVEY.

2810-XX AND 2801-XX INDICATE BOUNDARY ANGLE POINTS AS DETERMINE BY THIS SURVEY.
 NB INDICATES U.S.C.E. MONUMENTS FOR THE TOWN OF RELOCATED NORTH BONNEVILLE RECOVERED OR RESET.

TABLE OF CONTROLLING CORNER COORDINATES

CORNER	NORTH	EAST
SECTION CORNER 19-20-29-30	721786.254	1621315.461
1/4 CORNER 30:29	719146.897	1621267.087
N.E. CORNER HARDY D.L.C.	721791.153	1621033.683
INTX. SECLINE-E.LINE HAMILTON D.L.C.	721727.810	1624676.760
2810-01	720389.934	1621289.869
2810-02	720568.860	1621620.632
2810-03	720593.560	1621773.790
2810-04	721027.177	1621801.050
NB-10	721060.000	1621820.000
2801-01	721060.000	1621953.409
2801-02	720618.046	1621925.626
2801-03	720630.268	1622001.412
2801-04	720742.894	1622378.137
2801-05	720789.998	1622827.978
2801-06	721060.000	1622816.097
NB-11	721060.000	1623083.936
NB-12	720410.000	1623160.000
NB-13	720410.000	1623880.000
SE COR GOV. LOT 5	719134.012	1622008.210
NB-14	720835.000	1623880.000
NB-15	720835.000	1623247.296
NB-16	720878.784	1623273.653
NB-17	721059.764	1623266.353
NB-18	721170.811	1623195.561
NB-19	721263.378	1623183.520
NB-20	721359.031	1623214.039
NB-21	721321.741	1623325.908
NB-22	721300.684	1623573.959
NB-23	721408.444	1623886.342
NB-24	721727.830	1624157.196
NB-50	721910.000	1624880.000
NB-51	722125.000	1624985.001
ANGLE POINT - ON WEST LINE OF HAMILTON D.L.C.	723395.980	1620445.100
RM-3	721727.810	1624710.070



SURVEYOR'S CERTIFICATE

I, WILLIAM F. HAGEDORN, REGISTERED LAND SURVEYOR IN THE STATE OF WASHINGTON, HEREBY CERTIFY THAT THIS PLAT AND THE NOTES HEREON, OR ATTACHED, ARE A CORRECT REPRESENTATION OF A SURVEY PERFORMED DURING OCTOBER 1984 THRU JUNE, 1986, AT THE REQUEST OF THE U.S. ARMY OF ENGINEERS, IN ACCORDANCE WITH THE SURVEY RECORDING ACT OF THE STATE OF WASHINGTON AND ARTICLES OF DEPARTMENT OF THE ARMY, PORTLAND DISTRICT, CORPS OF ENGINEERS, CONTRACT No. DACW-57-85-M-0091.

(SIGNED & SEALED) *William F. Hagedorn*
 REGISTERED LAND SURVEYOR

CERTIFICATE No. 9579

AUDITOR'S CERTIFICATE

FILED FOR RECORD THIS 21st DAY OF JANUARY 1987, AT 10:40 A.M. IN BOOK 2 OF SURVEYS AT PAGE 253 AT THE REQUEST OF HAGEDORN, INC.

(SIGNED) DEPUTY COUNTY AUDITOR *[Signature]*

SEE SHEET 2 of 2 FOR ENLARGEMENT AND BOUNDARY INFORMATION

PROJECT BOUNDARY SURVEY

IN SECTIONS 20 AND 29, T.2N., R.7E., W.M.,
 SKAMANIA COUNTY, WASHINGTON

U.S.C.E. SEGMENT 28
 TRACT 2800 PARCELS B & C

SCALE: 1"=500'
 DATE: 05-29-86
 JOB NO. 84-157
 CALC. BY: B. TANDY
 DRAWN BY: C. BASLER
 CHECKED BY: W. HAGEDORN
 SHEET 1 OF 2

HAGEDORN, INC.
 1924 BROADWAY
 VANCOUVER, WASHINGTON
 TELE. (206) 696-4428

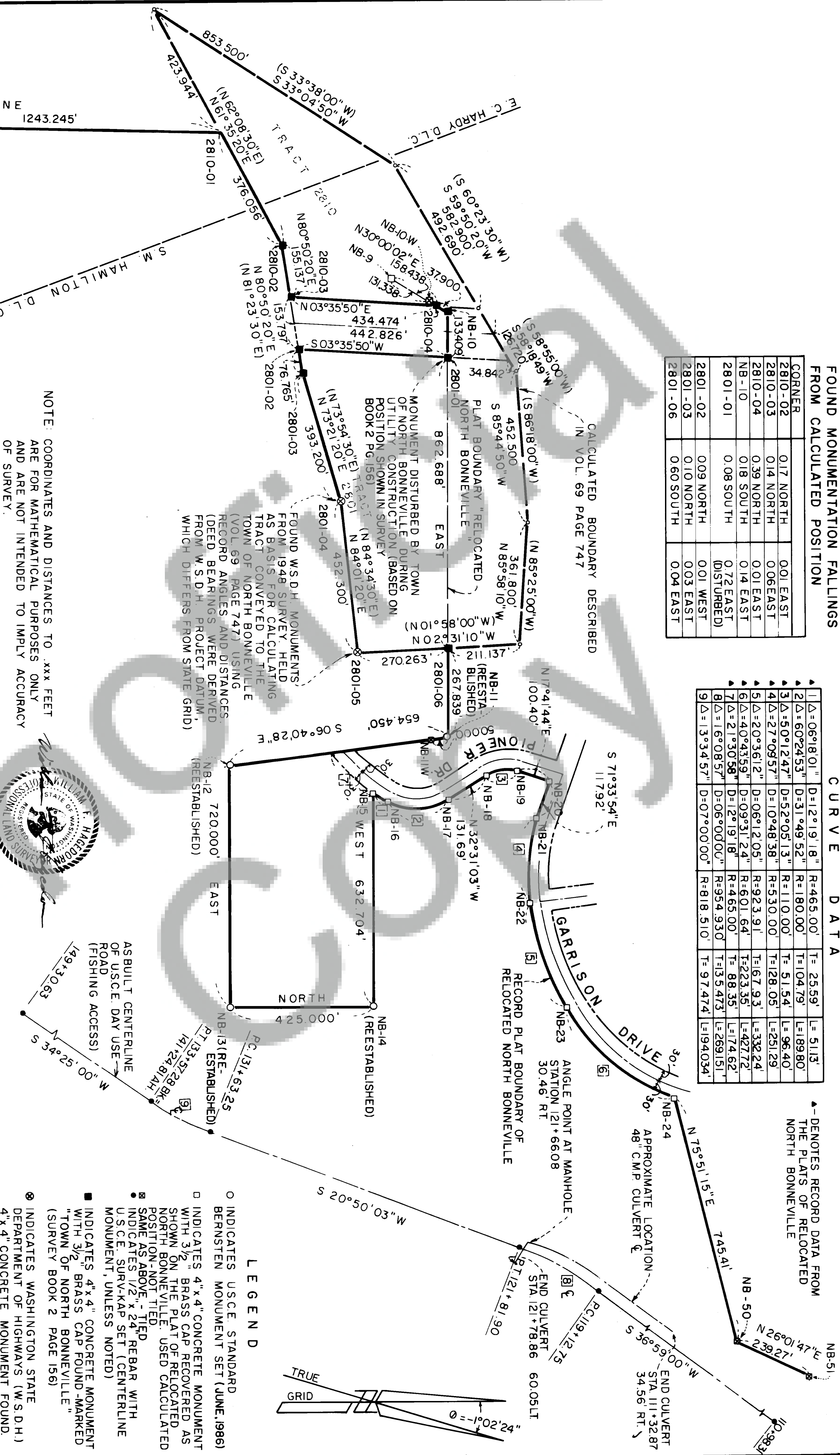
FOUND MONUMENTATION FALLINGS FROM CALCULATED POSITION

CORNER		
2810-02	0.17 NORTH	0.01 EAST
2810-03	0.14 NORTH	0.06 EAST
2810-04	0.39 NORTH	0.01 EAST
NB-10	0.18 SOUTH	0.14 EAST
2801-01	0.08 SOUTH	0.72 EAST (DISTURBED)
2801-02	0.09 NORTH	0.01 WEST
2801-03	0.10 NORTH	0.03 EAST
2801-06	0.60 SOUTH	0.04 EAST

CURVE DATA

	Δ	D	R	T	L
1	Δ=06°18'01"	D=12°19'18"	R=465.00'	T=25.59'	L=511.3'
2	Δ=60°24'53"	D=31°49'52"	R=180.00'	T=104.79'	L=189.80'
3	Δ=50°12'47"	D=52°05'13"	R=110.00'	T=51.54'	L=96.40'
4	Δ=27°09'57"	D=10°48'38"	R=530.00'	T=128.05'	L=251.29'
5	Δ=20°36'12"	D=06°12'05"	R=923.91'	T=167.93'	L=332.24'
6	Δ=40°43'59"	D=09°31'24"	R=601.64'	T=223.35'	L=427.72'
7	Δ=21°30'58"	D=12°19'18"	R=465.00'	T=88.35'	L=174.62'
8	Δ=16°08'57"	D=06°00'00"	R=954.930'	T=135.473'	L=269.151'
9	Δ=13°34'57"	D=07°00'00"	R=818.510'	T=97.474'	L=194.034'

▲ DENOTES RECORD DATA FROM THE PLATS OF RELOCATED NORTH BONNEVILLE



NOTE: COORDINATES AND DISTANCES TO .XXX FEET ARE FOR MATHEMATICAL PURPOSES ONLY AND ARE NOT INTENDED TO IMPLY ACCURACY OF SURVEY.

NOTE: FOLLOWING ARE RECORD COURSES FROM SURVEYS IN BOOK 1 PAGE 182 (TENN.) AND MINSTER-GLAESER IN BOOK 2 PAGE 156 (M-G) BOTH SURVEYS HELD DEED ANGLES AND DISTANCES FROM VOL. 69 PAGE 747. BOTH SURVEYS USED TENNESSEAN COORDINATES FOR NB-11 WHICH DIFFERS FROM THOSE DERIVED FROM THE PLAT OF NORTH BONNEVILLE WHICH AFFECTS THE LOCATION OF THE PLAT BOUNDARY BEARING DIFFERENCES ARE PROBABLY DUE TO DIFFERENT STANDARDS OF FIELD WORK USED AND MONUMENTATION HELD FOR ESTABLISHING BASIS OF BEARINGS.

TABLE OF RECORD COURSES

S.W. CORNER T 2810	N.B. CORNER T 2810	N.B. CORNER T 2810	N.B. CORNER T 2810
TENN. N 61°34'50"E 800.00'	TENN. N 89°59'00"E 133.19'	TENN. N 89°59'00"E 133.19'	TENN. N 89°59'00"E 133.19'
M-G N 61°33'16"E 800.00'	M-G N 89°59'00"E 133.27'	M-G N 89°59'00"E 133.27'	M-G N 89°59'00"E 133.27'
2810-02	TENN. N 80°49'50"E 155.14'	TENN. N 80°49'50"E 155.14'	TENN. N 80°49'50"E 155.14'
M-G N 80°48'16"E 155.14'	M-G N 80°48'16"E 155.14'	M-G N 80°48'16"E 155.14'	M-G N 80°48'16"E 155.14'
2810-03	TENN. N 03°35'20"E 447.15'	TENN. N 03°35'20"E 447.15'	TENN. N 03°35'20"E 447.15'
M-G N 03°33'46"E 442.54'	M-G N 03°33'46"E 442.54'	M-G N 03°33'46"E 442.54'	M-G N 03°33'46"E 442.54'
2810-04	TENN. N 03°35'20"E 433.28'	TENN. N 03°35'20"E 433.28'	TENN. N 03°35'20"E 433.28'
M-G N 03°33'46"E 434.04'	M-G N 03°33'46"E 434.04'	M-G N 03°33'46"E 434.04'	M-G N 03°33'46"E 434.04'
2810-05	TENN. N 30°01'00"E 39.40'	TENN. N 30°01'00"E 39.40'	TENN. N 30°01'00"E 39.40'
M-G N 30°01'00"E 38.13'	M-G N 30°01'00"E 38.13'	M-G N 30°01'00"E 38.13'	M-G N 30°01'00"E 38.13'
NB-10	TENN. N 73°20'50"E 393.20'	TENN. N 73°20'50"E 393.20'	TENN. N 73°20'50"E 393.20'
M-G N 73°19'16"E 393.20'	M-G N 73°19'16"E 393.20'	M-G N 73°19'16"E 393.20'	M-G N 73°19'16"E 393.20'
2801-04	TENN. N 84°00'50"E 452.30'	TENN. N 84°00'50"E 452.30'	TENN. N 84°00'50"E 452.30'
M-G N 83°59'16"E 452.30'	M-G N 83°59'16"E 452.30'	M-G N 83°59'16"E 452.30'	M-G N 83°59'16"E 452.30'
2801-01	TENN. N 02°33'14"W 269.71'	TENN. N 02°33'14"W 269.71'	TENN. N 02°33'14"W 269.71'
M-G N 02°33'14"W 269.71'	M-G N 02°33'14"W 269.71'	M-G N 02°33'14"W 269.71'	M-G N 02°33'14"W 269.71'
2801-02	TENN. N 89°59'00"E 267.60'	TENN. N 89°59'00"E 267.60'	TENN. N 89°59'00"E 267.60'
M-G N 89°59'00"E 267.60'	M-G N 89°59'00"E 267.60'	M-G N 89°59'00"E 267.60'	M-G N 89°59'00"E 267.60'
2801-03	TENN. N 73°20'50"E 267.97'	TENN. N 73°20'50"E 267.97'	TENN. N 73°20'50"E 267.97'
M-G N 73°19'16"E 267.97'	M-G N 73°19'16"E 267.97'	M-G N 73°19'16"E 267.97'	M-G N 73°19'16"E 267.97'
NB-11	TENN. N 89°59'00"E 267.97'	TENN. N 89°59'00"E 267.97'	TENN. N 89°59'00"E 267.97'
M-G N 89°59'00"E 267.97'	M-G N 89°59'00"E 267.97'	M-G N 89°59'00"E 267.97'	M-G N 89°59'00"E 267.97'

PROJECT BOUNDARY SURVEY

IN SECTIONS 20 AND 29, T. 2N, R. 7E, W.M., SKAMANIA COUNTY, WASHINGTON	U.S.C.E. SEGMENT 28
TRACT 2800 PARCELS B & C	HAGEDORN, INC.
SCALE: 1"=200'	1924 BROADWAY
DATE: 5-29-86	VANCOUVER, WASHINGTON
JOB NO. 84-157	TELE. (206) 696-4428
CALC. BY: B. TANDY	
DRAWN BY: C. BASLER	
CHECKED BY: W. HAGEDORN	
SHEET 2 OF 2	

LEGEND

- INDICATES U.S.C.E. STANDARD BERNSTEIN MONUMENT SET (JUNE, 1986)
- INDICATES 4"x4" CONCRETE MONUMENT WITH 3/2" BRASS CAP RECOVERED AS SHOWN ON THE PLAT OF RELOCATED NORTH BONNEVILLE. USED CALCULATED POSITION - NOT TIED
- SAME AS ABOVE - TIED
- INDICATES 1/2"x24" REBAR WITH U.S.C.E. SURV-KAP SET (CENTERLINE MONUMENT, UNLESS NOTED)
- INDICATES 4"x4" CONCRETE MONUMENT WITH 3/2" BRASS CAP FOUND - MARKED "TOWN OF NORTH BONNEVILLE" (SURVEY BOOK 2 PAGE 156)
- ⊗ INDICATES WASHINGTON STATE DEPARTMENT OF HIGHWAYS (W.S.D.H.) 4"x4" CONCRETE MONUMENT FOUND. (NO CAPS)
- NOTE: ALL MONUMENTS IN GOOD CONDITION.
- () BEARINGS IN PARENTHESES ARE DEED CALLS FROM VOL. 69 PAGE 747 (WHICH WERE DERIVED FROM W.S.D.H. 1948 SURVEY)