

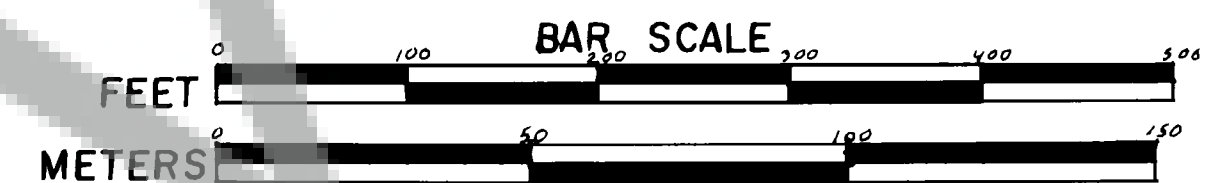
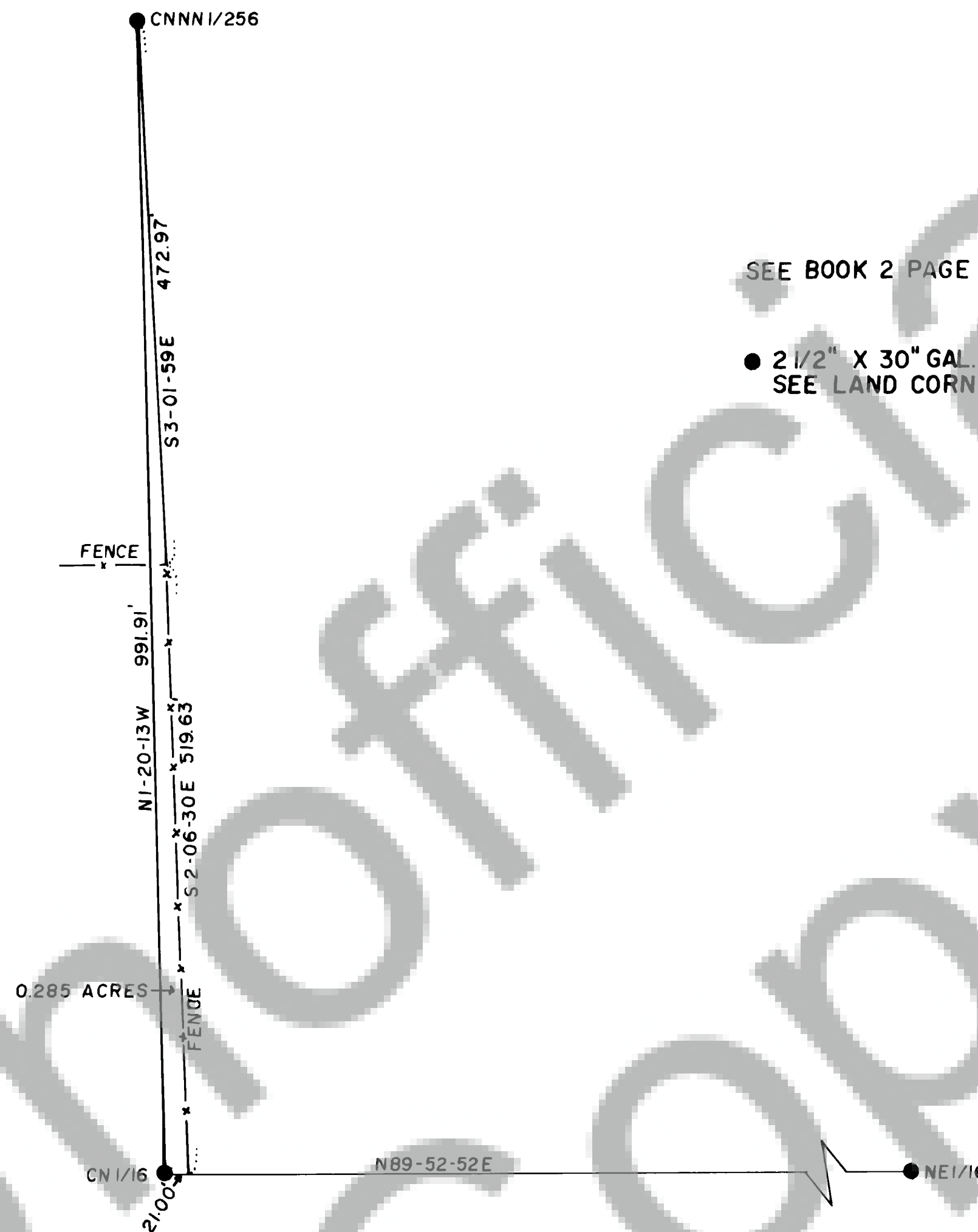
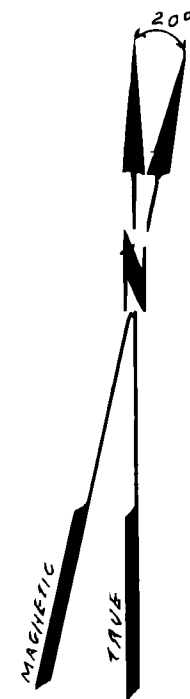
FILED FOR RECORD  
SKAMANIA CO. WASH.  
BY BISHOP SURVEYING

Dec 5 3 56 PM '86

AUDITOR  
GARY M. OLSON

SEE BOOK 2 PAGE 44 SURVEYS FOR SECTION SUBDIVISION  
AND BASIS OF BEARINGS

● 2 1/2" X 30" GAL. STEEL PIPE WITH A 2 1/2" BRASS CAP  
SEE LAND CORNER RECORD FORM FOR ACCESSORIES



#### LEGAL DESCRIPTION

BEGINNING AT A 2 1/2" GAL. STEEL PIPE W/ BRASS CAP AT THE SOUTH WEST CORNER OF THE NW 1/4 NE 1/4 OF SEC. 27, T. 4 N., R. 7 E., W.M. SKAMANIA CO., WA.; THENCE N1-20-13 W ALONG THE WEST LINE OF THE SAID NW 1/4 NE 1/4 991.91 FEET TO A LIKE GAL. STEEL MONUMENT AT THE NORTHWEST CORNER OF THE S 1/2 NW 1/4 NE 1/4 OF SAID SEC. 27; THENCE S 3-01-59 E 472.97 FEET TO A FENCE CORNER; THENCE S 2-06-30 E ALONG THE FENCE 519.63 FEET TO THE SOUTH LINE OF THE SAID NW 1/4 NE 1/4; THENCE ALONG SAID SOUTH LINE S 89-52-52 W 21.00 FEET TO THE POINT OF BEGINNING.

#### SURVEYOR'S CERTIFICATE

THIS MAP CORRECTLY REPRESENTS A SURVEY  
MADE BY ME OR UNDER MY DIRECTION IN  
CONFORMANCE WITH THE REQUIREMENTS OF THE  
SURVEY RECORDING ACT AT THE REQUEST OF  
USDA FOREST SERVICE IN SKAMANIA CO.



*Larry D. Bishop*  
PLS 16337

#### AUDITOR'S CERTIFICATE

FILED FOR RECORD THIS \_\_\_\_\_ DAY OF \_\_\_\_\_  
1986 AT \_\_\_\_\_ IN BOOK \_\_\_\_\_ OF  
\_\_\_\_\_ AT THE REQUEST  
OF \_\_\_\_\_  
COUNTY AUDITOR

PLAT OF SURVEY

U.S.F.S./SHEPARD EXCHANGE

SHEPARD TO U.S. FOREST SERVICE

LOCATION: NW 1/4 NE 1/4 SEC. 27, T. 4 N., R. 7 E., W.M.  
SKAMANIA COUNTY, WA.

SHEET 1 of 2

**BISHOP SURVEYING, INC.**  
P.O. BOX 729 HOOD RIVER, OR. 97031  
(503) 386-5122  
DATE: NOV. 11, 1986  
PROJECT 81044