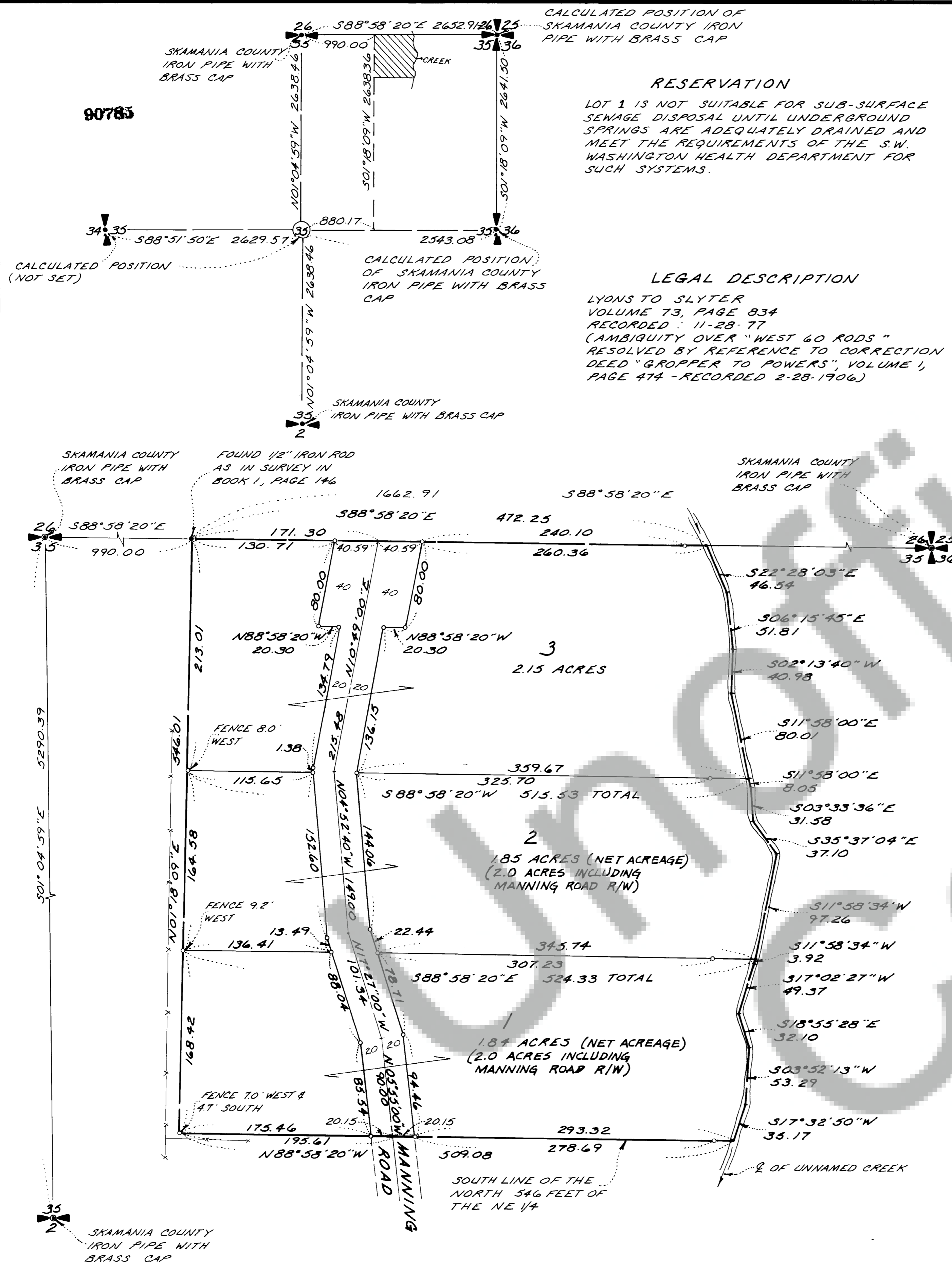


46
Page
Plats
B
Book

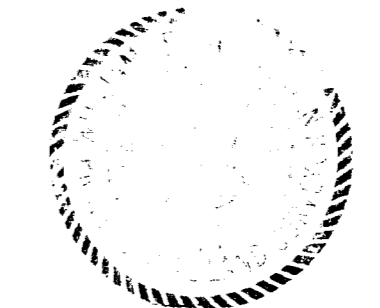
SLYTERS ACRES

IN A PORTION OF THE
NORTH 1/2 N.E. 1/4 SECTION 35, T.3N., R.7E., W.M.
SKAMANIA COUNTY, WASHINGTON
SCALE: 1" = 60'
APRIL, 1980
JOB No 79-358

BOOK B PAGE 46



BEARINGS BASED ON SKAMANIA COUNTY COORDINATE SYSTEM (BASED ON TIES TO 5557-E, 5637-F, 5637-G)



o INDICATES 1/2" IRON ROD WITH PLASTIC CAP SET

90783