

83086

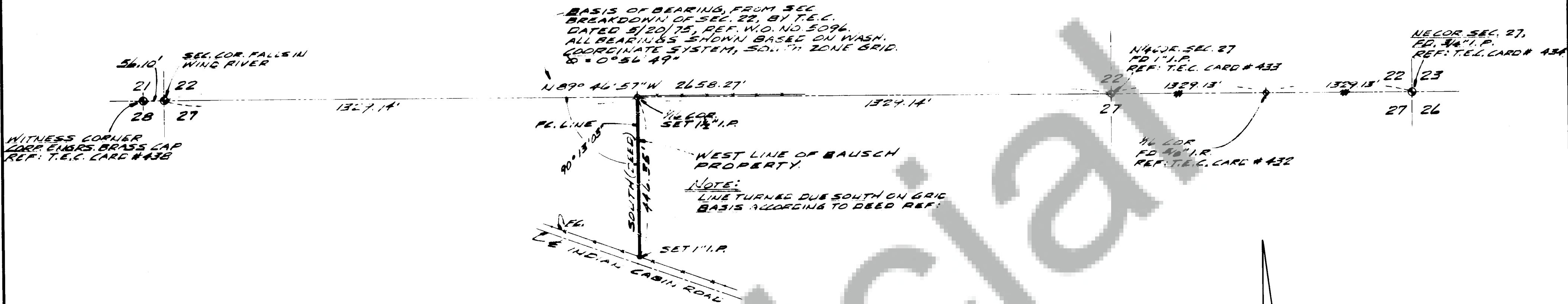
113

Page

Surveys

1

Book



W.O. #5291  
Sept. 9, 1976

FIELD NOTES:

A survey for MARK BAUSCH of a tract of land in the N. 1/2 of the N.W. 1/4 of Section 27, T. 3 N., R. 8 E., W.M., Skamania County, Washington.

CREW: David L. Tuttle, Partychief.  
Robert Ulrich, Chainman.

REFERENCES: T.E.C. survey no. 5096 for Don Cochran, 1975.

DATE COMPLETED: August, 1976.

On July 9, 1976 our firm was retained by Mark Bausch of Stevenson, Washington to survey a tract of land in Section 27, T. 3 N., R. 8 E., W.M. The intent of the survey was to set his Northwest corner and the westerly line between the N.W. corner and Indian Cabin Road.

In 1975 we had conducted a survey for Don Cochran in Section 22, T.E.C. work order #5096. During the course of this survey we had recovered the N.W. and N.E. corners of Section 27 and had reset the missing N. 1/4 corner. Bearing and ties for Mr. Bausch's survey are in reference to this survey.

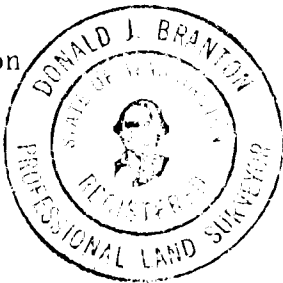
The survey was carried out by recovering our old traverse and control points set during the course of the Cochran survey. The position of the 1/16th corner, between the N.W. corner and N.E. corner was calculated and set from the old traverse line. A 1 1/2" iron pipe was set to monument this corner. A 12" alder tree with a blazed face bears N. 34° W., 18.8 feet. This corner is also the N.W. corner of the Bausch tract. From this point the westerly line was run south to an intersection with the northerly right-of-way fence along the Indian Cabin Road. A 1" iron pipe was set to monument this point.

Bearings are based on Washington State Coordinate System. Corners found or set during the course of this survey, together with measured bearings, distances and ties, are shown on the attached map, which by reference is made a part hereof.

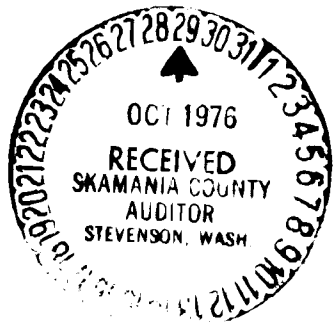
Signed David L. Tuttle  
David L. Tuttle, Washington Land  
Surveyor #11733

CHECKED AND APPROVED:

Tennessee Engineering Corporation  
Donald J. Branton, President



STATE OF WASHINGTON  
COUNTY OF SKAMANIA  
I HEREBY CERTIFY THAT THE ABOVE  
STATEMENT OF RECORDING, BEING BY  
Tennessee Engineering Corporation  
OF Ellen Douglas, WA  
AT 3:00 P.M. Oct 29, 1976  
WAS RECORDED IN BOOK 1  
OF Surveys AT PAGE 113  
RECORDS OF SKAMANIA COUNTY, WASH.  
COUNTY AUDITOR  
E. McFarland



83086

SURVEYOR'S CERTIFICATE:  
This map correctly represents a survey made by me or under my direction in conformance with the requirements of the Survey Recording Act at the request of Mark L. Bausch, in July, 1976.



Date	No.	Revisions	By	App.
MAP OF SURVEY OF WEST PROPERTY LINE FROM SECTION LINE SOUTH TO ROAD IN N 1/2 NW 1/4 SEC. 27, TWP 3N., R. 8E., W.M., SKAMANIA COUNTY, WASHINGTON FOR MARK L. BAUSCH				
Design	TENNESON ENGINEERING CORP.			Scale 1"=200'
Survey	Consulting Engineers 409 Lincoln Street The Dalles Oregon			Date 8/19/76
Drawn	Checked	App.	Work Order No.	Sheet
ENT	ed	APB	5591	1 of 1