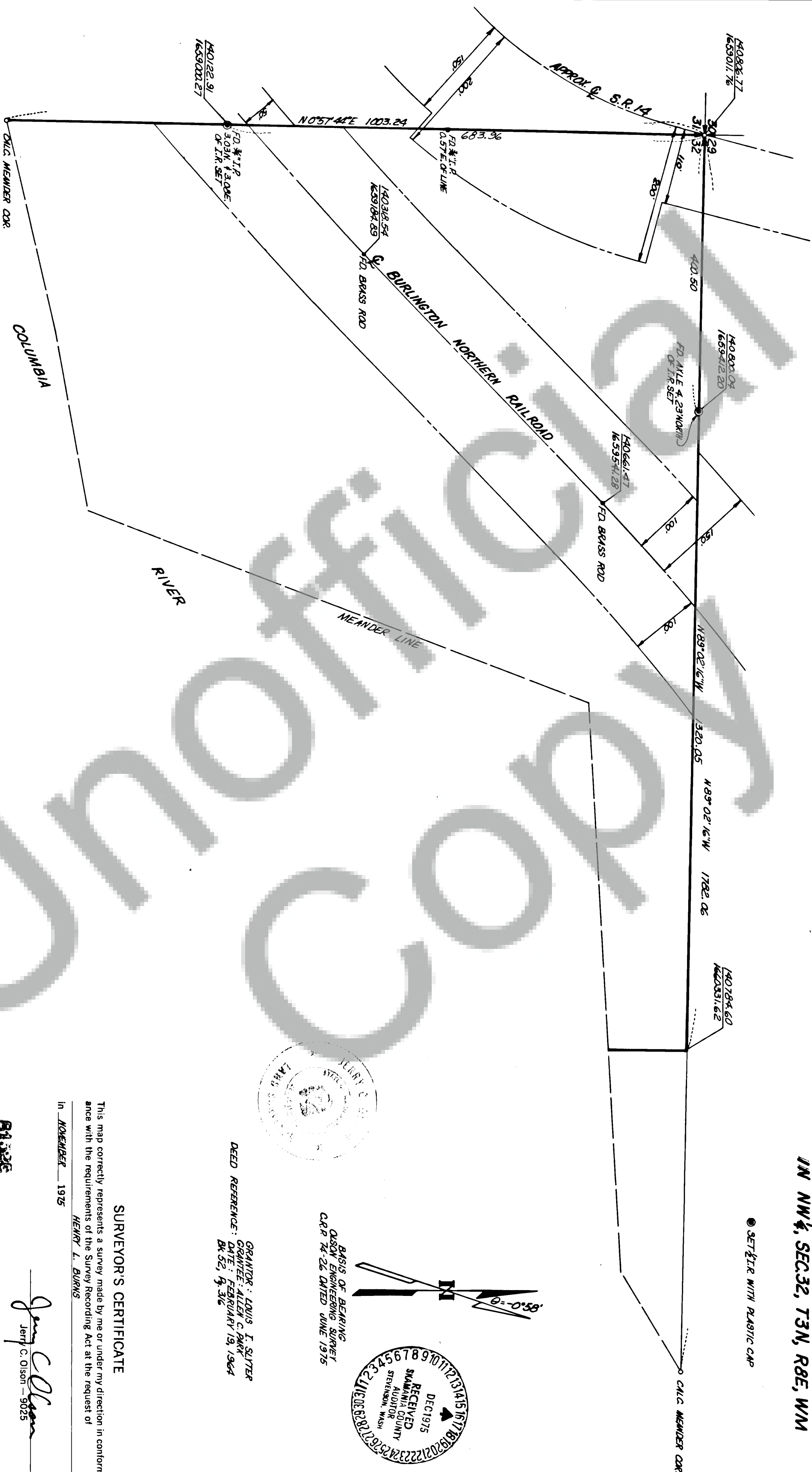


81528

BOOK 1 PAGE 84

SURVEY OF  
LOT 1  
IN NW 1/4, SEC. 32, T3N, R8E, WM

● SET IR WITH PLASTIC CAP



BASIS OF BEARING  
OLSON ENGINEERING SURVEY  
C.R.P. 74-26 DATED JUNE 1975



GRANTOR: LOUIS I. SLYTER  
GRANTEE: ALLEN C. PARK  
DATE: FEBRUARY 13, 1964  
BK 32, PG 316

SURVEYOR'S CERTIFICATE

This map correctly represents a survey made by me or under my direction in conformance with the requirements of the Survey Recording Act at the request of

HENRY L. BURNS

in NOVEMBER 1975

OLSON

AUDITOR'S CERTIFICATE

Filed for record this 16th day of December 1975 at 3:30 P.M.  
in Book 1 of Survey at page 84 at the request of  
JERRY C. OLSON

Deputy County Auditor



OLSON ENGINEERING  
112 E. 13 ST., VANCOUVER, WASH.  
PH. (206) - 695-1385  
1 KANAKA CR. RD., STEVENSON, WASH.  
PH. (509) - 427-8411

Scale: 1" = 100'. Date: 11/75  
Job No: 1625. Calc By: JCL  
Drawn By: J.C.  
Checked By: J.C.  
Sheet 1 of 1