

18302

SEC. 23, T-4N, R-7EWM

BOOK 1 PAGE 26

SOUTHWEST CORNER
SEC. 15, T-4N, R-7EWM
USFS BRASS CAP
MONUMENT FOUND

SOUTH 1/4 CORNER
SEC. 15, T-4N, R-7EWM
MONUMENT SET

WEST 1/4 CORNER
SEC. 14, T-4N, R-7EWM
COUNTY BRASS CAP
MONUMENT FOUND

NORTHWEST CORNER
SEC. 23, T-4N, R-7EWM
MONUMENT SET

NORTH 1/4 CORNER
SEC. 23, T-4N, R-7EWM
MONUMENT SET

NORTHEAST CORNER
SEC. 23, T-4N, R-7EWM
MONUMENT SET

EAST 1/4 CORNER
SEC. 23, T-4N, R-7EWM
BEARING TREES FOUND - MON. SET FROM BEARING TREES FOUND - SEE SHEET 2 OF 2.

SECTION SUBDIVISION INFORMATION

LEGAL DESCRIPTION

THE NE 1/4 OF THE NW 1/4 AND THE N 1/2 OF THE
NE 1/4 AND THE SE 1/4 OF THE NE 1/4 AND THE
NE 1/4 OF THE SE 1/4 AND THE E 1/2 OF THE SE 1/4
OF THE SE 1/4.
ALL IN SECTION 23, TOWNSHIP 4 NORTH, RANGE
7 E. W. 1/4.

NOTE:

BEARINGS AND DISTANCES IN PARENTHESES INDICATE
THE RECORD BEARINGS AND DISTANCES FROM THE
ORIGINAL GOVERNMENT LAND OFFICE SURVEY NOTES
FOR THE SOUTH BOUNDARY OF TOWNSHIP 4 NORTH,
RANGE 7 E. W. 1/4, 1895.
ALL OTHER BEARINGS AND DISTANCES ARE BY
ACTUAL MEASUREMENTS. THE BEARINGS ARE ON
ASSUMED DARING BEARINGS TO THE WEST LINE
OF SECTION 23 BEING N0°00'W.

SEE SHEET 2 OF 2 FOR BEARING TREE
INFORMATION

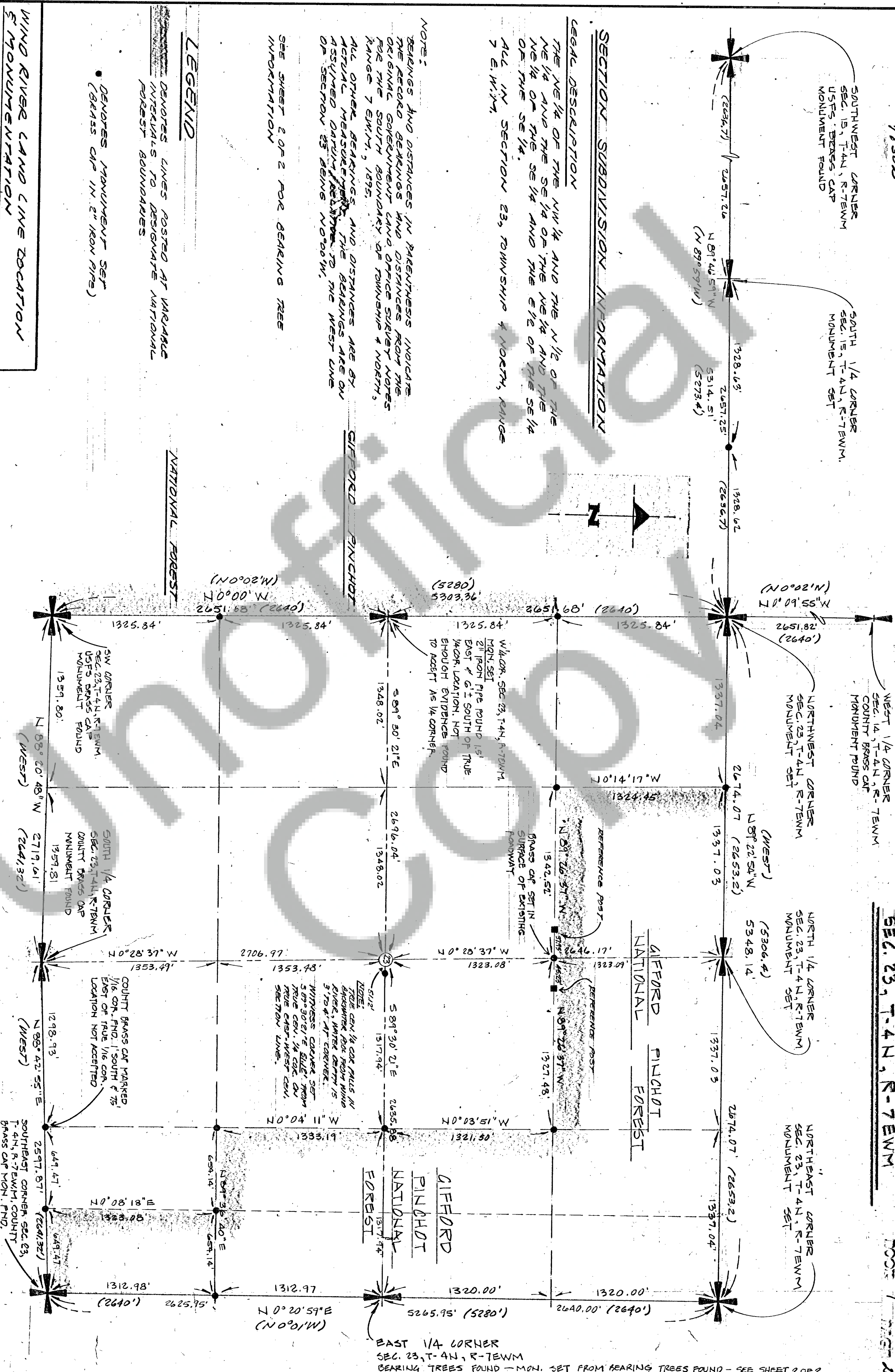
LEGEND

DOTTED LINES POSTED AT VARIABLE
INTERVALS TO DESIGNATE NATIONAL
FOREST BOUNDARIES

• DENOTES MONUMENT SET
(BRASS CAP IN 2" IRON PIPE)

NATIONAL FOREST

CIFORD PINCHOT



WIND RIVER LAND LINE LOCATION
& MONUMENTATION
CONTRACT NO. 603533

SURVEYOR'S CERTIFICATE

THIS MAP CORRECTLY REPRESENTS A SURVEY
MADE BY ME OR UNDER MY DIRECTION IN
CONFORMANCE WITH THE REQUIREMENTS OF
THE SURVEY RECORDS AT THE REQUEST
OF UNITED STATES DEPT. OF AGRICULTURE
ON AUGUST 19 74.

AUDITOR'S CERTIFICATE

FILED FOR RECORD THIS 8 DAY OF Oct
19 74 AT 11:30 AM IN BOOK 1 OF SURVEYS
AT PAGE 26 AT THE REQUEST OF UNITED
STATES DEPT. OF AGRICULTURE.

Professional Engineer & Land Surveyor seal for Preston L. Shephard, State of Washington, No. 12345. Includes title 'Civil Engineer & Land Surveyor' and 'United States Dept. of Agriculture'.

Signature of Preston L. Shephard, Surveyor.

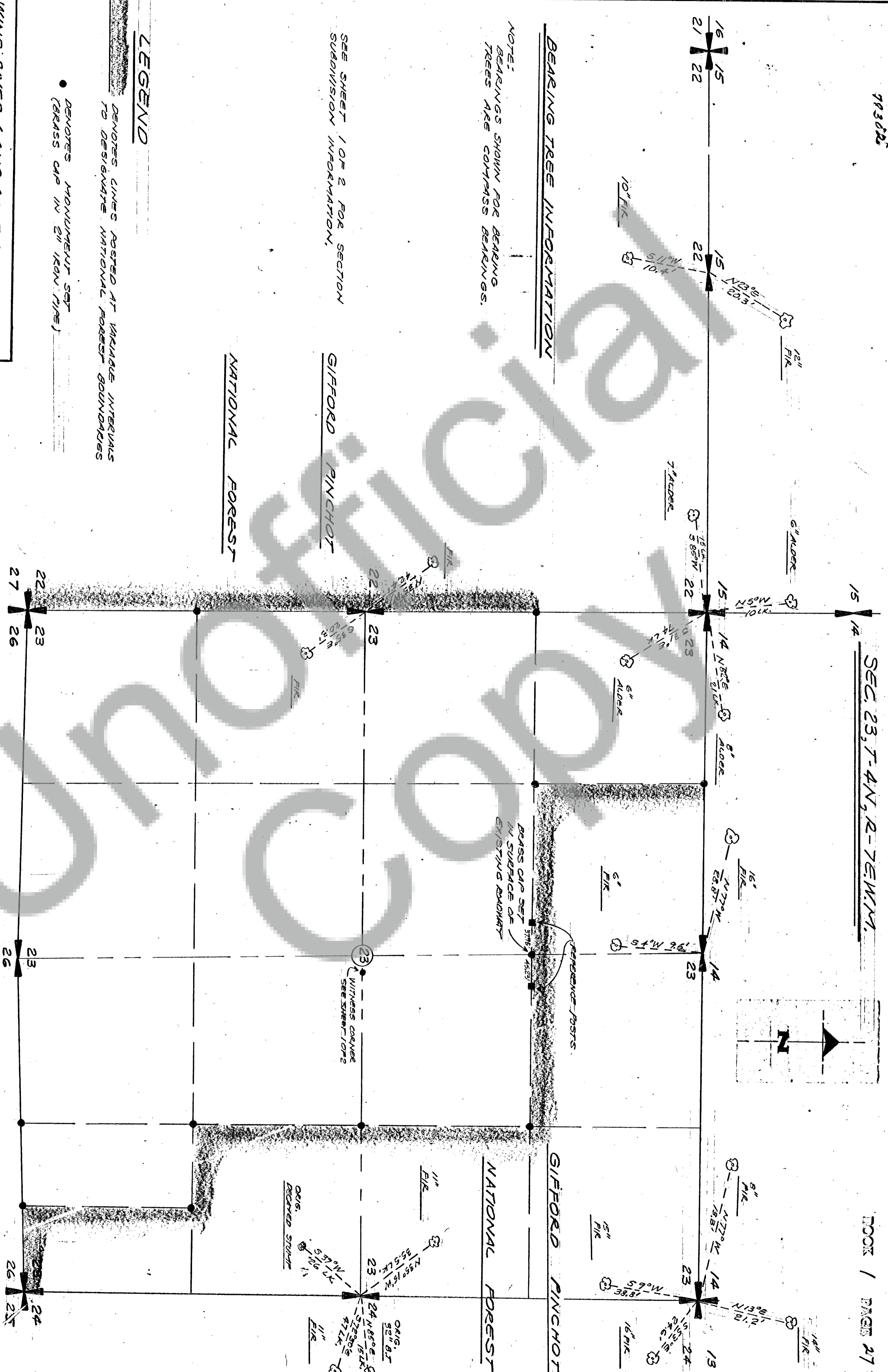
Auditor's seal for the County Auditor, State of Washington, No. 12345.

Signature of County Auditor, Deputy.

993882

SEC. 23, T-4N, R-7E, W.M.

BOOK / PAGE 27



BEARING TREE INFORMATION

NOTE:
BEARINGS SHOWN FOR BEARING TREES ARE COMPASS BEARINGS.

SEE SHEET 1 OF 2 FOR SECTION SUBDIVISION INFORMATION.

LEGEND

DENOTES LINES POSTED AT VARIANCE INTERVALS TO DESIGNATE NATIONAL FOREST BOUNDARIES

DENOTES MONUMENT SET (BRASS CAP IN 2" IRON PIPE)

WIND RIVER LAND CINE COCATION & MONUMENTATION

CONTRACT NO. 003537

PRESTON L. SHEPHERD
PROFESSOR OF SURVEYING
STATE OF WASHINGTON
CIVIL ENGINEER & LAND SURVEYOR

Preston L. Shepherd
LAND SURVEYOR
BUREAU WASHINGTON

UNITED STATES DEPT. OF AGRICULTURE
BOUNDARY SURVEY FOR

DATE: 9-10-74
JOB: 74108
SHEET 2 OF 2

SURVEYOR'S CERTIFICATE

THIS MAP CORRECTLY REPRESENTS A SURVEY MADE BY ME OR UNDER MY DIRECTION IN CONFORMANCE WITH THE REQUIREMENTS OF THE SURVEY RECORDS ACT AT THE REQUEST OF UNITED STATES DEPT. OF AGRICULTURE IN AUGUST, 1974.

Preston L. Shepherd
PRESTON L. SHEPHERD
CERT. NO. 7189

AUDITOR'S CERTIFICATE

FILED FOR RECORD THIS 8 DAY OF Oct 1974 AT WASH. IN BOOK 1 AT THE REQUEST OF UNITED STATES DEPT. OF AGRICULTURE.

COUNTY AUDITOR: *W. J. [Signature]*
BY DEPUTY: *E. [Signature]*

