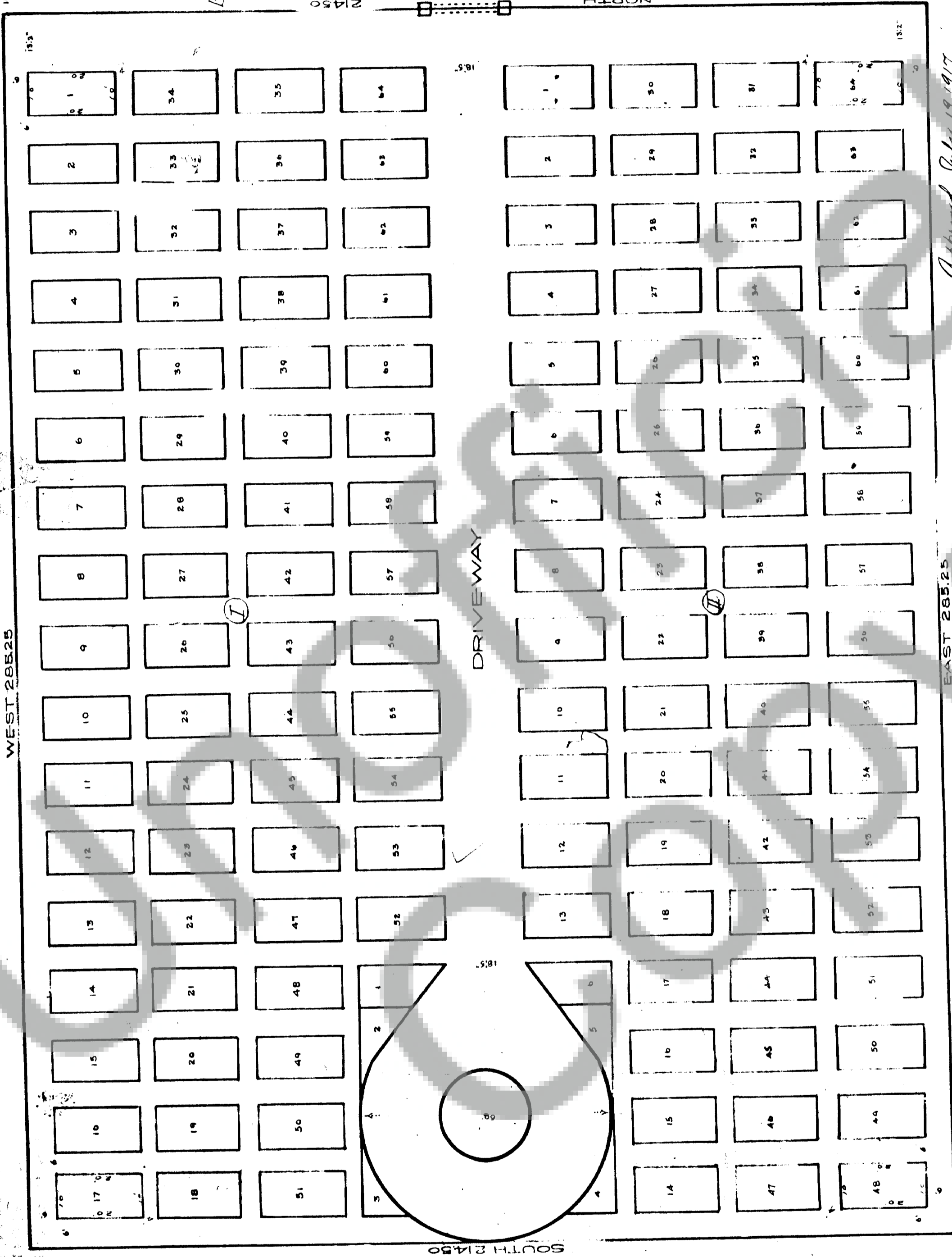


# PLAN OF I.O.O.F. CEMETERY CARSON WASH.

WEST 285.25

INITIAL POINT



CENTER OF COUNTY ROAD-SEC LINE

Block I

Block II

DRIVEWAY

Approved July 19, 1917

*J. J. Shipley* Chairman Board of Co. Com.

*J. J. Sumner*

*M. S. Shields*

EAST 285.25

### DESCRIPTION

BEGINNING AT A POINT 898 FT SOUTH OF THE  
 NORTH EAST CORNER 898 FT SECTION 20-T-3  
 NORTH WEST CORNER WEST 20 FT TO POINT OF  
 BEGINNING THENCE WEST 285.25 FT  
 THENCE SOUTH 21450 FT THENCE EAST  
 285.25 FT THENCE NORTH 21450 FT TO POINT  
 OF BEGINNING - SCALE 1"=20' - J.F. JOYCE-ENGR.

Filed for record at 8 a.m. July 23, 1917 by J.F. Joyce - Chief Clerk - Co. Auditor