

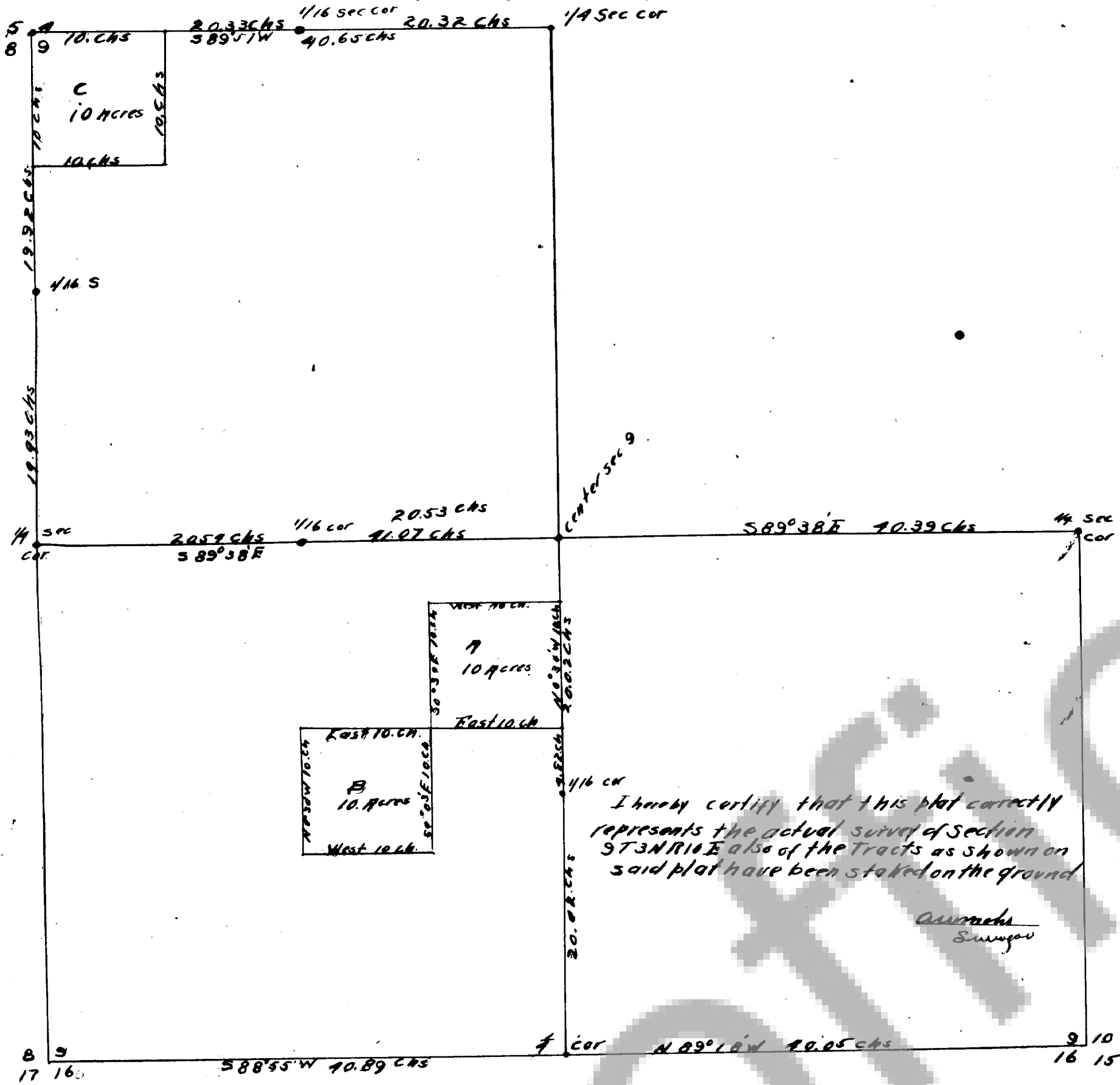
Hood Land Company

Orchard Tracts

Situated in Sec. 9 T3N R10E

Surveyed by A. W. Meko The Dallas Ore

Scale - 1" = 40' chs



Field Notes of chs

- Survey of Section Nine (9) Township Three (3) North, Range Ten (10) East W.M. and the Subdivisions thereof Begin at the Southeast corner of Section 9, the original government bearing trees and corners standing. I run North 10.26 chs to section corner between sections 9 and 10, iron pipe corner. From S.E. corner section 9 run North 89° 38' West on the line between sections 9 and 16. 40.05" to original 1/4 section corner. Thence South 89° 55' West to Southwest corner of section 9. Thence North 0° 47' West 40.89" to 1/4 corner to sections 8 and 9. Thence North 0° 35' East 11.05" to Northwest corner of section 9. Thence North 89° 50' East between sections 9 and 7. 39.85" to section corner to sections 9 and 7 original government bearing trees in place reset stake from same. From 1/4 section corner to sections 9 and 7 run South 0° 30' East 40.00" to 1/4 center Section 9 set maple post 3x3x36 inches from which a hemlock 10 inches diameter bears North 2° 30' East 22 lbs a hemlock 18 inches bears North 76° 30' West 45 lbs. 60.00" to 1/16 section corner set stake from which maple 5 inches diameter bears South 5° 46' East 7 links 80.09" to 1/4 section corner to sections 9 and 16. From the 1/4 section corner to sections 9 and 10 run North 89° 38' West 40.39" to 1/4 corner in center of section. 60.92" to 1/16 corner stake in the North boundary of S.W. 1/4. 81.46" to 1/4 section corner between sections 8 and 9.

I hereby certify that the above notes correctly represent the survey and subdivisions of Section 9 Township 3 North Range 10 East W.M.

A. W. Meko Surveyor

filed Jan. 22, 1912

A. W. Meko
Co. Auditor