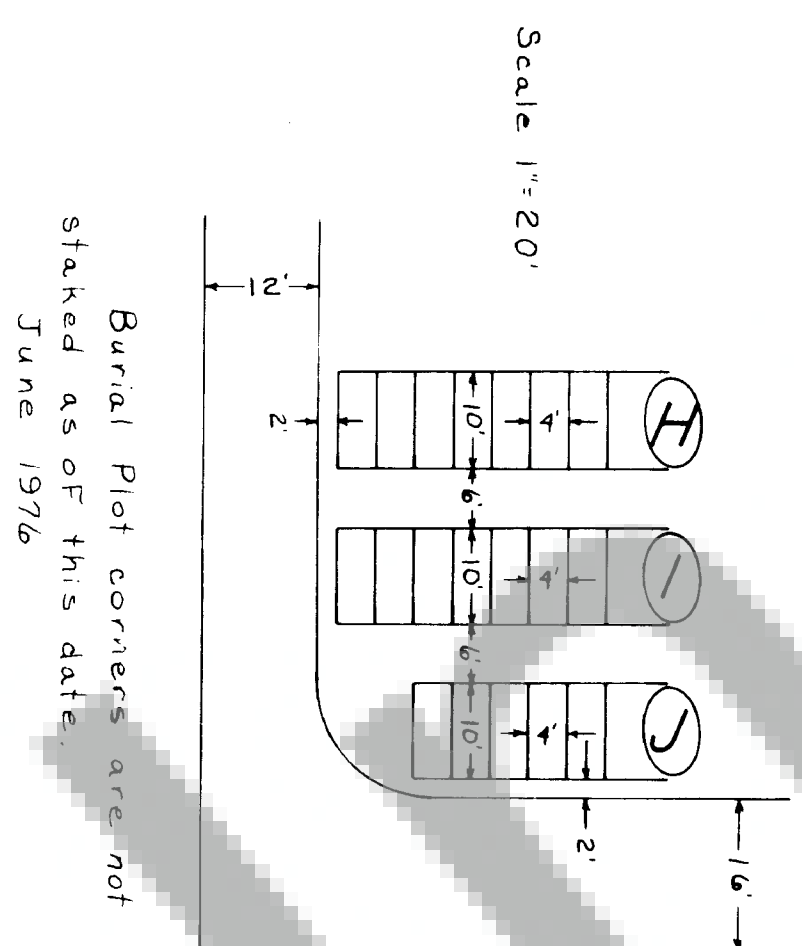
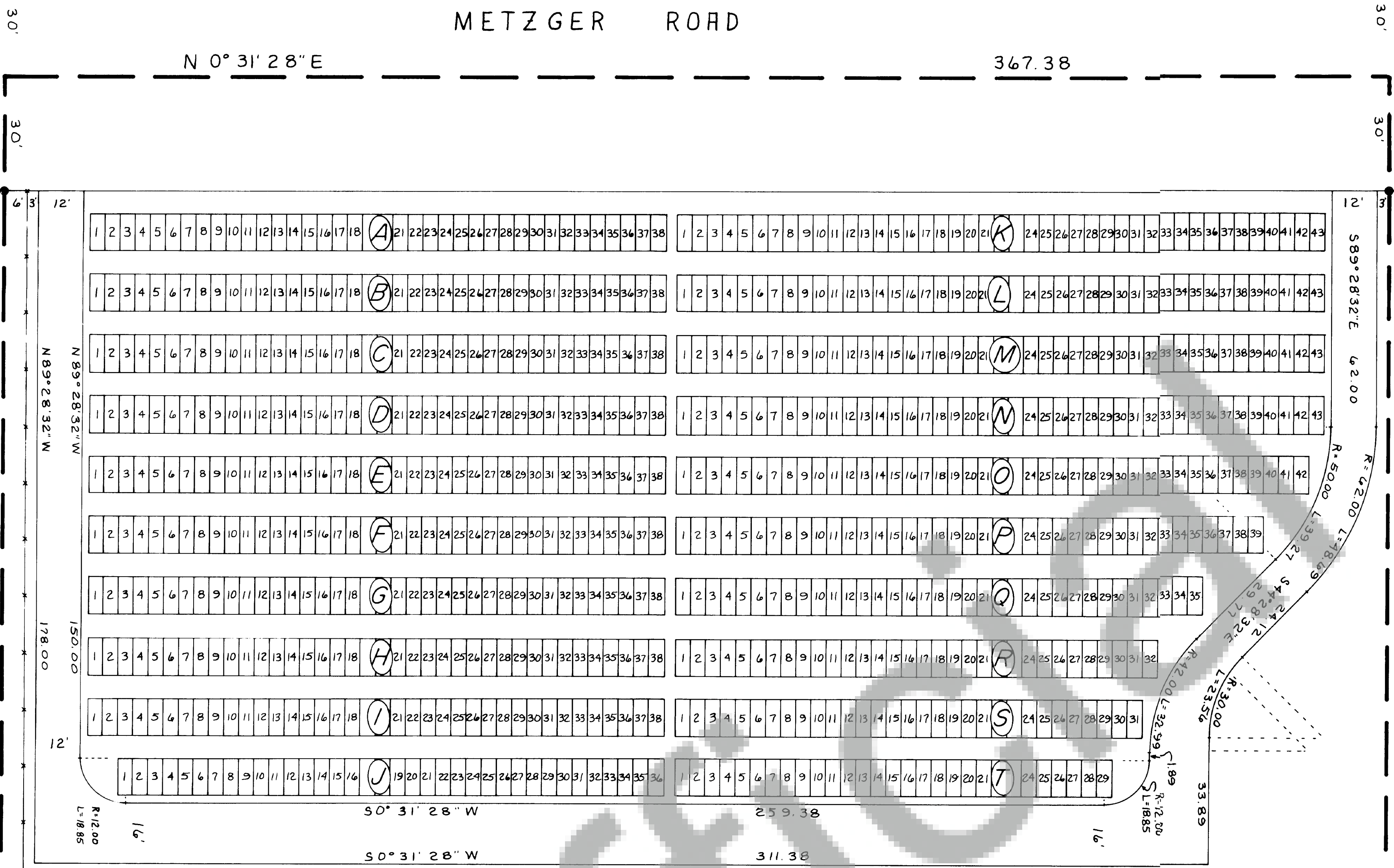


NEW CARSON CEMETERY PHASE I

JUNE 1976



LAND SURVEYOR
I, DENNIS L. WALLACE, REGISTERED AS A PROFESSIONAL LAND SURVEYOR BY THE STATE OF WASHINGTON, CERTIFY THAT THIS PLAT IS BASED ON AN ACTUAL SURVEY OF THE LAND DESCRIBED HEREIN, CONDUCTED BY ME OR UNDER MY SUPERVISION, DURING THE PERIOD OF MAY 1976, THROUGH JUNE 1976; THAT THE DISTANCES, COURSE, AND ANGLES ARE SHOWN THEREON CORRECTLY; AND THAT MONUMENTS OTHER THAN THOSE MONUMENTS APPROVED FOR SETTING AT A LATER DATE, HAVE BEEN SET AND LOT CORNERS STAKED ON THE GROUND AS DEPICTED ON THE PLAT.

COUNTY COMMISSIONERS
APPROVED BY
CHAIRMAN OF THE BOARD OF COUNTY COMMISSIONERS

COUNTY ASSESSOR
APPROVED BY
SKAMANIA COUNTY ASSESSOR

COUNTY ENGINEER
APPROVED BY
SKAMANIA COUNTY ENGINEER

COUNTY AUDITOR
ATTESTED BY
SKAMANIA COUNTY AUDITOR

COUNTY TREASURER
APPROVED BY
SKAMANIA COUNTY TREASURER

DISTRICT HEALTH OFFICER
APPROVED BY
DISTRICT HEALTH OFFICER

DENNIS L. WALLACE
PROFESSIONAL LAND SURVEYOR

SCALE: 1"=20'
DATE: June 1976
JOB NO.: 76-287
CALC BY: RBS
DRAWN BY: RBS
CND BY: DLW
SHEET 1 OF 1

Dennis L. Wallace & Associates
REGISTERED LAND SURVEYORS
7409 N.E. HAZEL DELL AVE. WACOUVER, WASHINGTON
Phone: (206) 694-7344

RESIDENTIAL • COMMERCIAL • INDUSTRIAL • RECREATIONAL LANDS
BOUNDARY • TOPOGRAPHY • CONTROL SURVEYS