

99811

RES 20-1808(9-77)

LAND CORNER RECORD

SKAMANIA County
T. 7 N, R. 5E, W.M. Corner Code No. P-6
Segregated Surveys:
Name: Center West 1/16 Section 20 Corner No.: C-W 1/16 S20
DLC, HES, Tract, Mining Claim, Indian Allotment, Federal Reserve, Townsite.

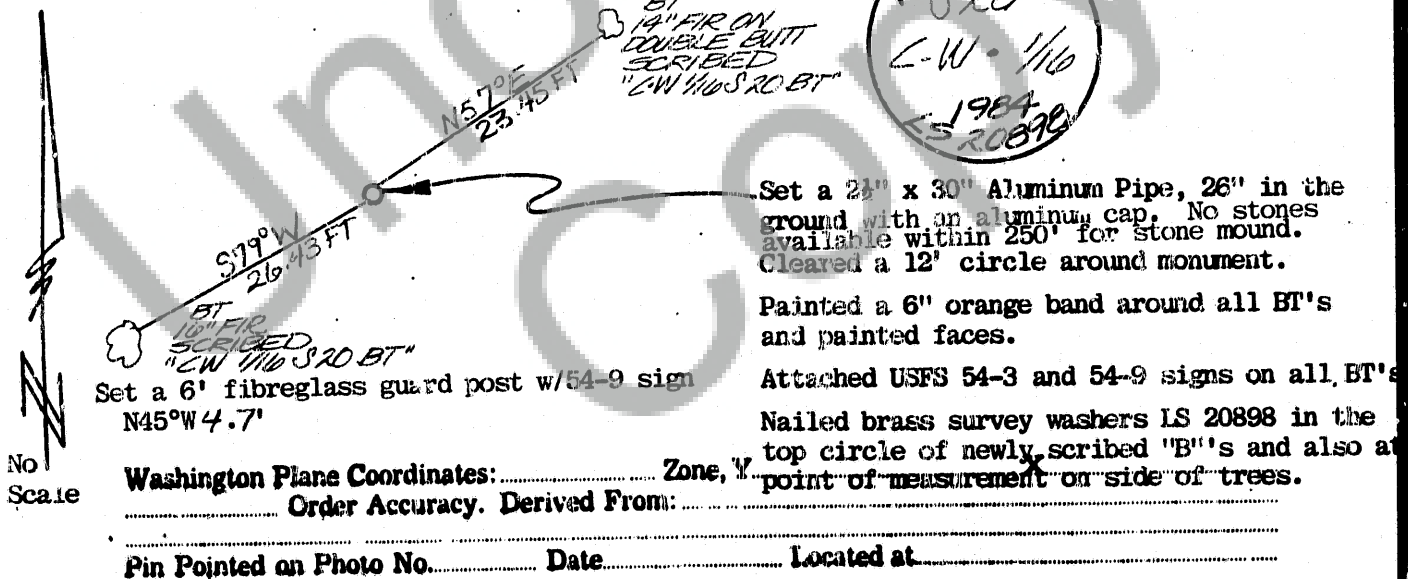
1. History of Corner Establishment and Subsequent Restoration:

NONE

2. Description of Evidence Found:

NONE

3. Describe Monument, Accessories and Corollary Data to Perpetuate this Corner Location. Diagram corner and indicate meridian and reference to map of record. Surveyor's Field Book No. 259-C Page No. 21 Date of work 8-9-84



SURVEYOR'S CERTIFICATE

This corner record correctly represents work performed by me or under my direction in compliance with the provisions of Chapter 50, Laws of 1973. Date August 10, 1984

Signature *[Signature]* Certificate No. 20898



AUDITOR'S CERTIFICATE

Filed for record this 23RD day of AUGUST 1985 at 11:25 A.M. In Book 115 of MONUMENTS at page 66 at the request of

BUTLER & ZENKNER LAND SURVEYORS, INC.

[Signature] County Auditor

Registered S
Index: 1
In: 5
Filed
Mailed