

State of Washington
DEPARTMENT OF NATURAL RESOURCES
BUREAU OF SURVEYS AND MAPS
LAND CORNER RECORD

18

19

Skamania County

T 3 N, R 6 E, W.M.

Segregated Surveys:

Name: n/a

Corner Code No. N-1

Corner Number: n/a

1. History of Corner Establishment and Subsequent Restoration: Originally set by GLO in 1823 as being common corner to both townships. Remarkd in 1892 by GLO as being corner to T3N, R6E, W.M. only.

2. Description of Evidence Found:

- 60" fir stub with old blazes and tags at N67W 16.5 feet. (BT)
- Hemlock root collar at S49W, 39.6 feet. (BT)
- 16" fir stub with old axe marks at N45E, 19.1 feet. (BT).



3. Describe Monument, Accessories and Corollary Data to Perpetuate this Corner Location. Diagram corner and indicate meridian and reference to map of record. Surveyor's Field Book No. 600.21, Page No. 54. Date of work 3-24-82.

See reverse side for sketch.

Washington Plane Coordinates: South Zone, Y 151,327.341, X 1,585,104.465 Third Order Accuracy.

Derived from: Ties to USC & GS "Lookout Mountain" and DNR 1, T3N, R6E.

Pin Pointed on Photo No. _____, Date _____, Located at _____.

SURVEYOR'S CERTIFICATE

[Seal]

This corner record correctly represents work performed by me or under my direction in compliance with the provisions of Chapter 50, Laws of 1973. Date February 20, 1985.

H. Thomas Laird
Signature

21490
Certificate No.



AUDITOR'S CERTIFICATE

Filed for record this 21st day of FEBRUARY 1985 at 12:50 P.M.
In Book 3/6 of MONUMENTS at page 38 39 at the request
of Washington State Department of Natural Resources.

S.S.

William J. D. Jones, Jr.
County Auditor

3000 ch
 310 of 1882 - Set post, from which ...
 16" Fir N45-30E 29L
 16" Hemlock, S39E 16L
 4 1/2" Hemlock S47W 60L
 60" Fir N67W 25L

North between 13 & 18 5.08 ch. - A Fir 10" diam
 310 of 1892

79.67 - Found post, from which --
 16" Fir N45-30E 29L
 16" Hemlock S39E 16L

Destroyed all marks for S. 13 & 24 S.W. SE

Section corner $\frac{18}{19}$ T3N R6E

FOUND.

60" Fir STUB, 40' TALL, WITH 2 BRANCHES
 2 TAGS, 1 OLD RUSTY, 1 DIV. OF FORESTRY
 49.61 E & NOW 16.5 FT
 Hemlock root collar S49W 39.6 FT

NO MARKS

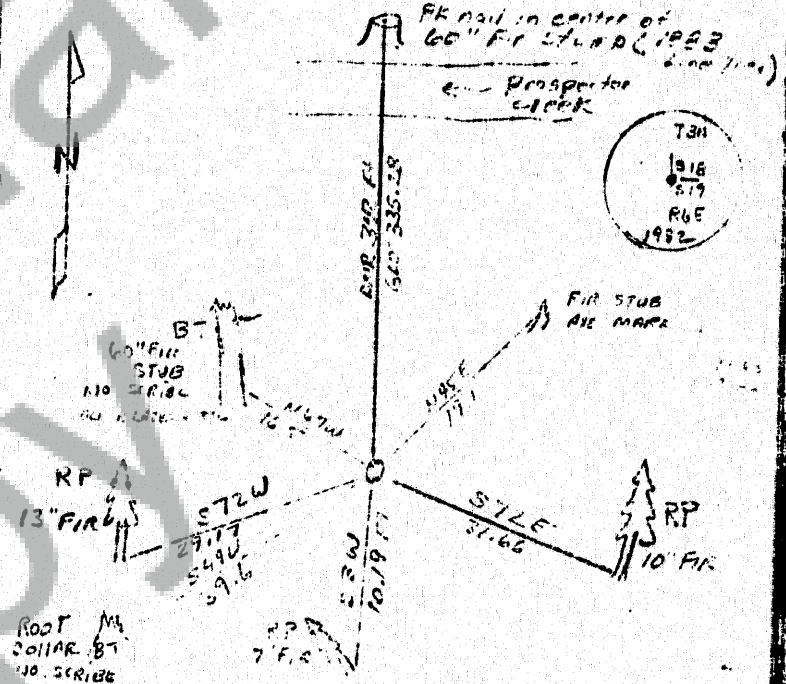
16 Fir STUB 24" HIGH W/AZE MARKS
 N45E 19.1 FT

Slight Depression in Ground S39E
 10.6 FT NO TRACE OF 16" HEM.

3-24-82

GORDON
 BRESSLER

51
 670.21



SET A 3" Cyl. CONC MON WITH D.N.R. BRASS
 CAP 4" ABOVE GROUND
 CORNER LIES ON STEEP HILL SIDE SLOPING
 TO NORTH, APPROX 300' SOUTH OF BEAR CREEK
 AND APPROX 150' SOUTH of Foot of Hill

3/6