

LAND CORNER RECORD

Skamania County
 T 3 N. R. 7 E. W.M. Corner Code No. G-21
 Segregated Surveys:
 Name: N/A Corner No.: N/A
 DLC, HES, Tract, Mining Claim, Indian Allotment, Federal Reserve, Townsite.

1. History of Corner Establishment and Subsequent Restoration:

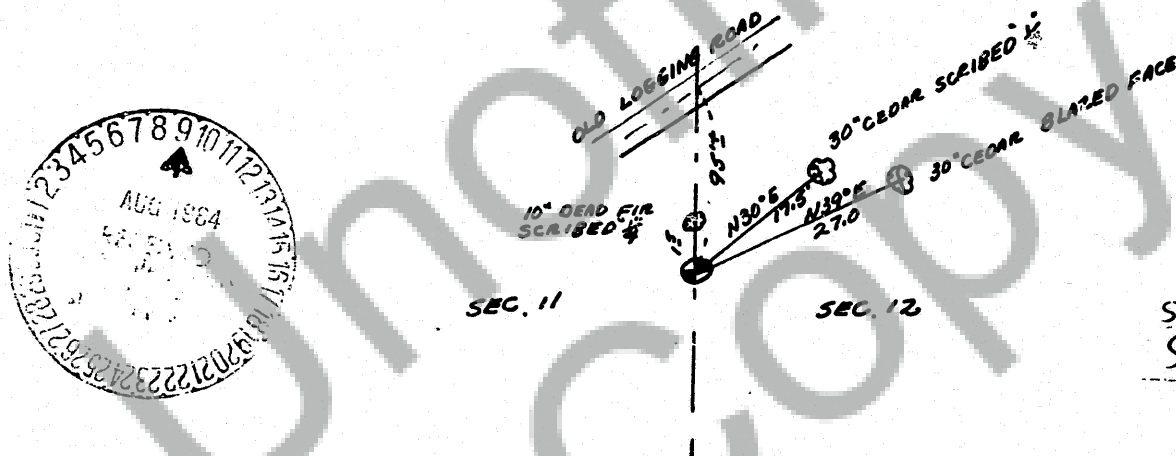
G.L.O. survey by Jacob Richardson in 1892. Set post for corner and two bearing trees.

In August, 1965, Aalvik & Garwood found Skamania County brass monument, 24" cedar bearing tree N. 30° E. 18 feet.

2. Description of Evidence Found:

Found Skamania County brass cap monument. 30" cedar scribed "1/4" bears N. 30° E. 17.5 feet. A 10" dead fir scribed "1/4" on north face bears N. 1.5 feet. A 30" cedar with blazed face and no scribing bears N. 39° E. 27.0 feet. Distances to center of trees.

3. Describe Monument, Accessories and Corollary Data to Perpetuate this Corner Location. Diagram corner and indicate meridian and reference to map of record. Surveyor's Field Book No. _____ Page No. _____ Date of work May 24, 1984.



Washington Plane Coordinates: _____ Zone, Y _____, X _____
 Order Accuracy. Derived From: _____

Pin Pointed on Photo No. _____ Date _____ Located at _____

SURVEYOR'S CERTIFICATE

This corner record correctly represents work performed by me or under my direction in compliance with the provisions of Chapter 50, Laws of 1973. Date July 31, 1984

Signature

11733
Certificate No.

98028

AUDITOR'S CERTIFICATE

Filed for record this 9th day of AUGUST 1984 at 2:40 P.M. In Book 3/7 of MONUMENTS at page 49 at the request of TENNESON ENGINEERING CORP

WM Olson by A. Davis, Rep.
 County Auditor