

LAND CORNER RECORD

Skamania County
T. 2 N, R. 5 East, W.M. Corner Code No. X-1
Segregated Surveys:
Name: n/a Corner No.: n/a
DLC, HES, Tract, Mining Claim, Indian Allotment, Federal Reserve, Townsite.

1. History of Corner Establishment and Subsequent Restoration:

Originally set by John Truten during 1857 G.L.O. survey. Restored with 1" iron pipe inside 5" well casing, date set unknown. Skamania County records indicate this pipe to be a witness corner to the 1/4 corner being 34 ft South in the Washougal River. 1" pipe used as 1/4 corner on 1971 unrecorded survey by Dept. of Game. In 1977, Wallace and Assoc. used Dept. of Game tie to 1" pipe as shown in Book 7 pg 106

2. Description of Evidence Found:

Above mentioned 1" x 30" iron pipe inside 5" well casing at N 82 W, 21.51 ft. from D.N.R. R.M. position. Not accepted this survey.

3. Describe Monument, Accessories and Corollary Data to Perpetuate this Corner Location. Diagram corner and indicate meridian and reference to map of record. Surveyor's Field Book No. 607.07A Page No. 20 Date of work 20 Jan '82

Corner calculated at mid-point, however unable to set as corner falls in the Washougal River. Set standard D.N.R. concrete monument and stamped brass cap in stone and concrete mound as R.M. to corner at N 1° 31' 24" E, 25.00 ft. from position 6 ft +/- North of north bank of river. Shown on D.N.R. Final Map 441.
See sketch on back.

Washington Plane Coordinates: South Zone, Y 107,444.60 X 1,552,729.69
3rd Order Accuracy. Derived From: USC & GS 'Elis' and DNR 3-3N-4E

Pin Pointed on Photo No. Date Located at

SURVEYOR'S CERTIFICATE

This corner record correctly represents work performed by me or under my direction in compliance with the provisions of Chapter 50, Laws of 1973. Date Sept. 27, 1983

Signature M. A. KENALAMAN Certificate No. 11577



AUDITOR'S CERTIFICATE

Filed for record this 6th day of OCTOBER 1983 at 2:35 P.M. In Book 2/5 of MONUMENTS at page at the request of Washington State Department of Natural Resources

J. M. Olson by J. Davis
County Auditor

GLO of 185.7

North on the East boundary Sec. 36

38.25 Washougal River 175 links runs west

40.00 Marked an Alder 5" for 1/4 corner --

An Alder 5" 550E 3 L.

An Alder 6" S89W 5L

REFERENCE MONUMENT AT
E 1/4 Section 36 T2N R4E

Found a 1" iron pipe, 30" high, inside a 5" pipe. Skamania County records indicate this pipe to be a witness corner, the 1/4 corner being 34' south in the river. No mention of any original evidence exists in the county records.

Did not accept the 1" iron pipe

Set corner by single proportion

other surveys:

5/21 Dept. of Game used W.C. as the 1/4 corner

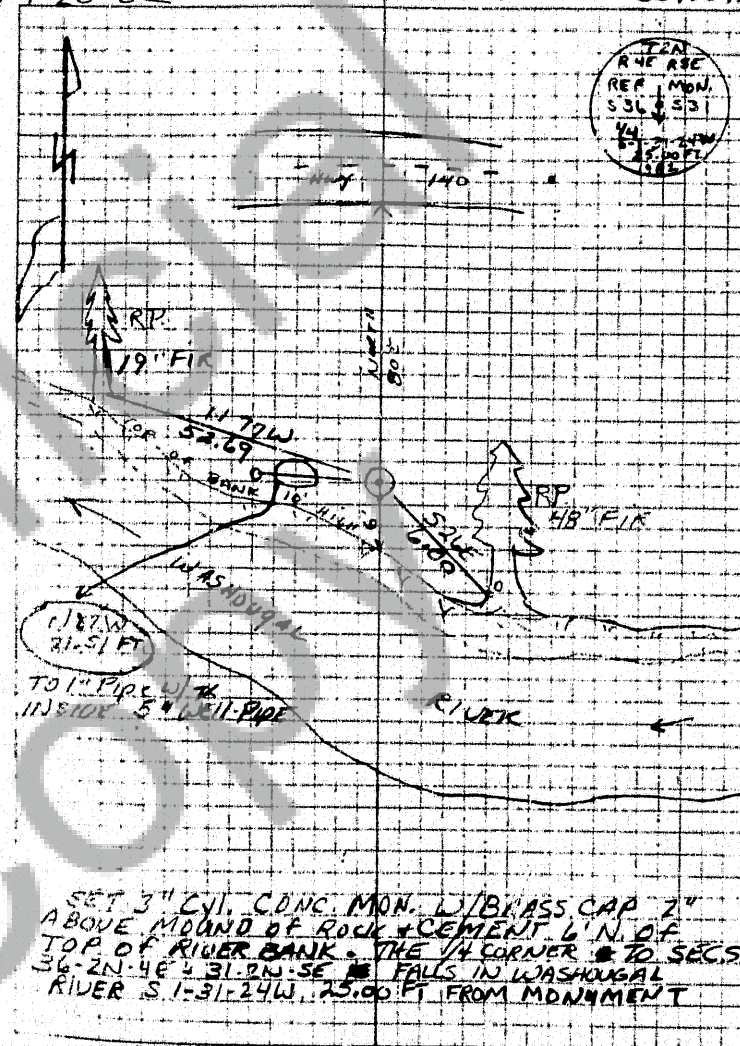
1977 Wallace & Assoc used DOG's tie to 1" pipe

LAIRD
GORDON
BRESSLER

20

607.07A

1-20-82



42.66
10.03
52.69