

95009

LAND CORNER RECORD

15/14

SKAMANIA County

Corner Code No. L-17

T 7 N. R. SE W.M.
Segregated Surveys:

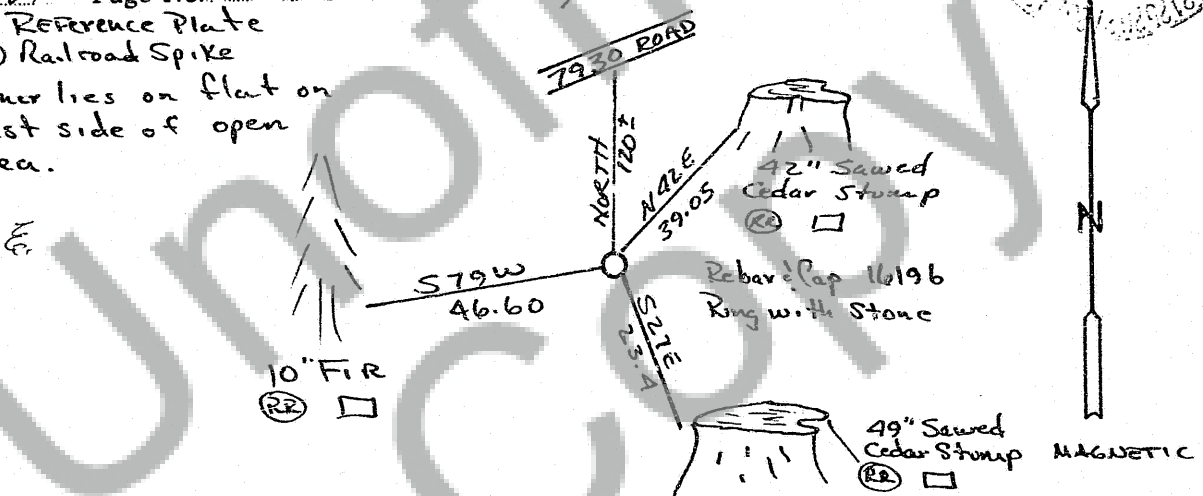
Name: DLC. HES. Tract. Mining Claim. Indian Allotment. Federal Reserve. Townsite. Corner No.:

- History of Corner Establishment and Subsequent Restoration: GLO. Found blow down 36" cedar sawed stump. At record bearing and distance from determined center where tree would have stood dig for remains of K. fir post. Found some staining at correct bearing and distance. Found blaze on cedar snag to south that was in alignment and 48" Hemlock line tree to south that fit reasonably well. Set rebar and cap at stain and ringed monument with stone. Photo's on file.
- Description of Evidence Found: 36" Cedar stump (sawed). Tree had been blown over and cedar cutters and taken log for shakes. Had a rotted face that had overgrowth on it. It appeared to have axe marks on portion of overgrowth. Probable staining from glo corner post. GLO CALLS.
36" Cedar S 31 1/2 E 19 links.

3. Describe Monument, Accessories and Corollary Data to Perpetuate this Corner Location. Diagram corner and indicate meridian and reference to map of record. Surveyor's Field Book No. 7-81 Page No. 16 Date of work 4 Sept 82

Reference Plate
 Railroad Spike

Corner lies on flat on west side of open area.



Washington Plane Coordinates: Zone, Y, X

Order Accuracy. Derived From:

Pin Pointed on Photo No. Date Located at.

SURVEYOR'S CERTIFICATE

This corner record correctly represents work performed by me or under my direction in compliance with the provisions of Chapter 50, Laws of 1973. Date 8/2

Signature Archie B. Carpenter Certificate No. 16196



AUDITOR'S CERTIFICATE

Filed for record this 16 day of July 1982 at 2 M. In Book 7/5 of 7/5 at page 57 at the request of Archie B. Carpenter

County Auditor