

LAND CORNER RECORD

SKAMANIA

County

10
15

T 7 N, R 5 E, W.M.

Corner Code No. J-15

Segregated Surveys:

Name:

Corner No.:

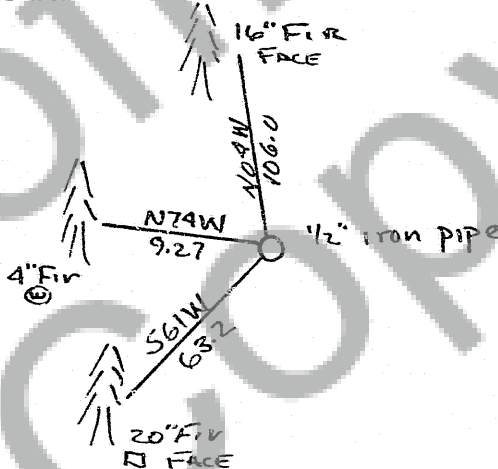
DLC, HES, Tract, Mining Claim, Indian Allotment, Federal Reserve, Townsite.

1. History of Corner Establishment and Subsequent Restoration: GLO STAKE SET MAY, 1947 By H.W. Freed of Longview Fibre from 2 BT snags at bearing and distance. He referenced stake. Oct 1960 1/2" x 30" iron pipe set for corner by Longview Fibre. Referenced 2 trees. Corner was 15 feet north of Creek, flows SW, and 7 feet south of cat road on south edge of old landing.

2. Description of Evidence Found: 1/2" iron pipe.
20" W. Fir S61W 63.2 Face: Fibre tag. 1960 = 18" Fir Scribed 19515 BT
16" W. Fir N09W 106.0 Face 1960 = 8" Fir Scribed 19510 BT
1947 R.P.'S.
8" W. Fir N40W 30.5 6" W. Fir S0515E 13.8
GLO
30" W. Fir N18E 27 links
20" W. Fir S57E 32 links

3. Describe Monument, Accessories and Corollary Data to Perpetuate this Corner Location. Diagram corner and indicate meridian and reference to map of record. Surveyor's Field Book No. 9-81 Page No. 17 Date of work 18 Nov 82

- Reference plate
4" x 2 1/4" GALVANIZED NAIL



Washington Plane Coordinates: Zone, Y, X

Order Accuracy. Derived From:

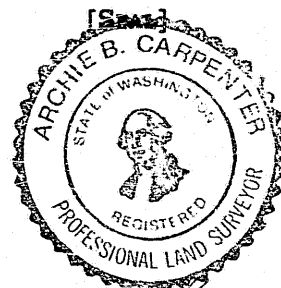
Pin Pointed on Photo No. Date Located at.

SURVEYOR'S CERTIFICATE

This corner record correctly represents work performed by me or under my direction in compliance with the provisions of Chapter 50, Laws of 1973. Date 8 Nov 82

Signature Archie B. Carpenter

Certificate No. 16196



AUDITOR'S CERTIFICATE

Filed for record this 10 day of Dec 1982 at 2 M. In Book 715 of Skamania at page 58 at the request of

Archie B. Carpenter

Greg M. Glenn County Auditor