

RES 20-1808(9-77)

95310

LAND CORNER RECORD

SKAMANIA

County

T 4 N. R 9E W.M.

Corner Code No. V-19

Segregated Surveys:

Name: ONE-QUARTER COR.

Corner No.:

DLC, HES, Tract, Mining Claim, Indian Allotment, Federal Reserve, Townsite.

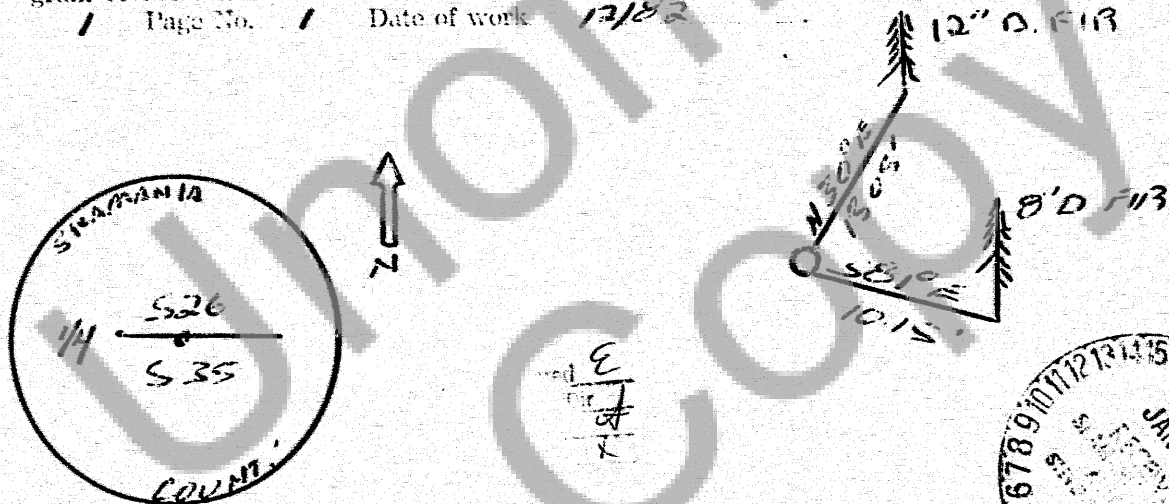
1. History of Corner Establishment and Subsequent Restoration:

COR WAS ORIGINALLY SET BY DEPUTY SURVEYOR JACOB RICHARDSON IN OCT.-NOV. 1892 UNDER CONTRACT # 385 IN 1926 SKAMANIA COUNTY BE. MON. COR.

2. Description of Evidence Found:

FD A SKAMANIA COUNTY BRASS CAP ON A 1/2" I.P.

3. Describe Monument, Accessories and Corollary Data to Perpetuate this Corner Location. Diagram corner and indicate meridian and reference to map of record. Surveyor's Field Book No. 1 Page No. 1 Date of work 12/82



Washington Plane Coordinates: \_\_\_\_\_ Zone, Y \_\_\_\_\_ X \_\_\_\_\_  
 Order Accuracy: \_\_\_\_\_ Derived From: \_\_\_\_\_  
 Pin Pointed on Photo No. \_\_\_\_\_ Date \_\_\_\_\_ Located at \_\_\_\_\_

SURVEYOR'S CERTIFICATE

This corner record correctly represents work performed by me or under my direction in compliance with the provisions of Chapter 50, Laws of 1973.

Signature: *Roy O. Gaylord* Date: *1-19-83*  
 Certificate No. *18751*



95310

AUDITOR'S CERTIFICATE

Filed for record this *19* day of *Jan*, 1983 at *10:40* P. M. In  
 Book *4/9* of *Monument* at page *59* at the request of  
*Roy O. Gaylord*  
*Clayton W. Olcott*  
 County Auditor