

RES 20-1808(9-77)
95299

LAND CORNER RECORD

X 21 L.T.

SKAMANIA

County

T. 4 N. R. 9E W.M.
Segregated Surveys:

Corner Code No. N/A

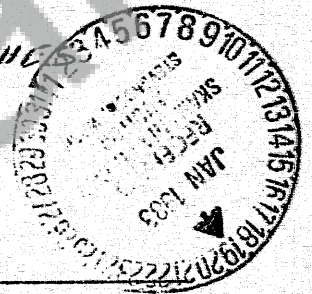
Name: R.M. TO LINE TREE Corner No.:
D.C. H.P.S. Tract, Mining Claim, Indian Allotment, Federal Reserve, Townsite

1. History of Corner Establishment and Subsequent Restoration:

LINE TREE ORIGINALLY MARKED BY DEPUTY SURVEYOR JACOB RICHARDSON UNDER CONTRACT NO 383 IN OCT.-NOV. 1892.

2. Description of Evidence Found:

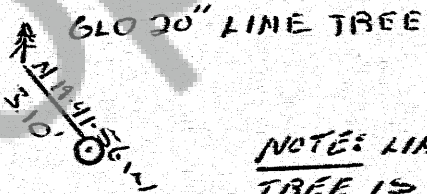
FOUND A 20" DOUG. FIR WITH 2 NOTCHES ON NORTH SIDE.



3. Describe Monument, Accessories and Corollary Data to Perpetuate this Corner Location. Diagram corner and indicate meridian and reference to map of record. Surveyor's Field Book No.

7. Page No. 12 Date of work 12/82

SET A 2 1/2" x 30" ALUM. PIPE WITH A 2 1/2" ALUM. CAP



NOTE: LINE TREE IS 50-19-04 E @ 150.17' FROM 1/16" COR.

Washington Plane Coordinates: Zone, Y X
Order Accuracy, Derived From:

Pin Pointed on Photo No. Date Located at

SURVEYOR'S CERTIFICATE

This corner record correctly represents work performed by me or under my direction in compliance with the provisions of Chapter 50, Laws of 1973. Date 1-6-1983

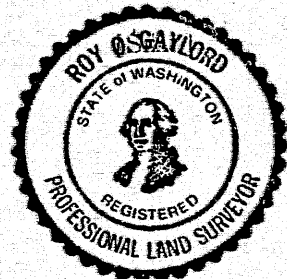
Signature

Roy C. Staylor

Certificate No.

18131

95299



AUDITOR'S CERTIFICATE

Filed for record this 19 day of Jan 1983 at 10:40 A.M. in Book 4/9 of Skamania County at page 39 at the request of

Roy C. Staylor

Henry M. Nelson
County Auditor