

95287

LAND CORNER RECORD

U.19.25

SKAMANIA

County

T 4 N. R 9 E W.M.

Corner Code No. N/A

Segregated Surveys:

Name: CWW SE 1/256

Corner No.:

D.L.C. H.E.S. Trust, Mining Claim, Indian Allotment, Federal Reserve, Townsite

1. History of Corner Establishment and Subsequent Restoration:

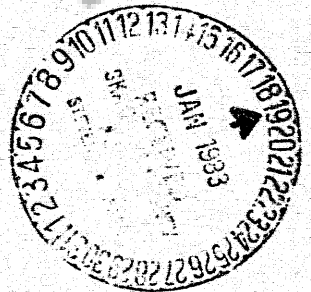
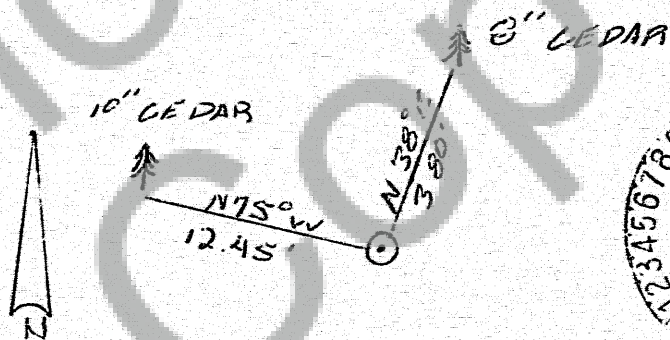
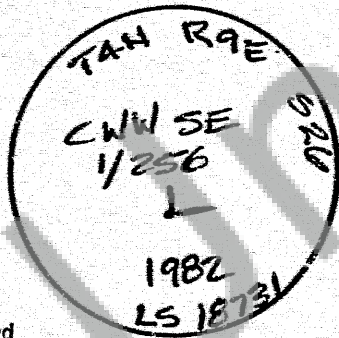
CORNER WAS SET BY H.F. DONNELLY IN 1953

2. Description of Evidence Found:

FOUND A 1 3/4" WATER PIPE SET BY H.F. DONNELLY BEARING N39-50-20 E A DISTANCE OF 18.34' FROM OUR SET POINT.

3. Describe Monument, Accessories and Corollary Data to Perpetuate this Corner Location. Diagram corner and indicate meridian and reference to map of record. Surveyor's Field Book No. S Page No. 18 Date of work 12/82

SET A 2 1/2" X 30" ALLUM. PIPE WITH A 2 1/2" ALLUM. CAP.



Washington Plane Coordinates: Zone, Y X Order Accuracy Derived From:

Pin Pointed on Photo No. Date Located at

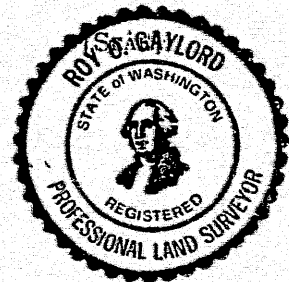
SURVEYOR'S CERTIFICATE

This corner record correctly represents work performed by me or under my direction in compliance with the provisions of Chapter 50, Laws of 1973. Date 1-6-1983

Signature: Roy S. Gaylord

Certificate No. 18731

95287



AUDITOR'S CERTIFICATE

Filed for record this 19th day of January 1983 at 10:40 A. M. in Book 4/9 of Monuments at page 27 at the request of

Perro Surveying

Signature: Gary M. Olson by B. Anbeck, County Auditor