

95285

LAND CORNER RECORD

T 4 N. R. 9 E W.M.
Segregated Surveys:

SKAMANIA

County
Corner Code No. U-18

Name. W.C. TO SW 1/16

Corner No.:

PLC, H&S, Tract, Mining Claims, Indian Allotment, Federal Reserve, Townsite

1. History of Corner Establishment and Subsequent Restoration:

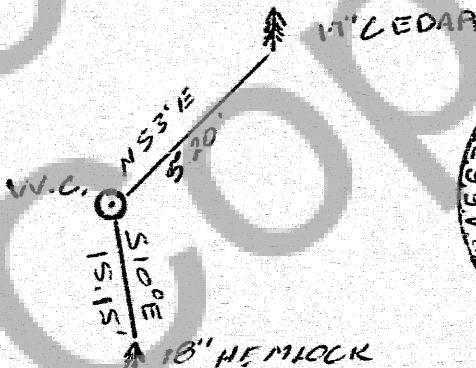
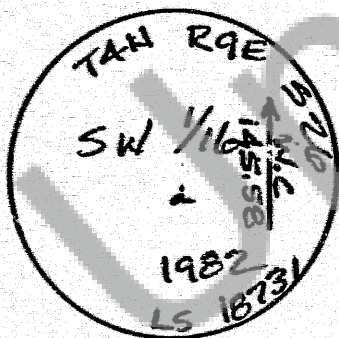
N/A

2. Description of Evidence Found:

N/A

3. Describe Monument, Accessories and Corollary Data to Perpetuate this Corner Location. Diagram corner and indicate meridian and reference to map of record. Surveyor's Field Book No. 6 Page No. 7 Date of work 12/82

SET A 2 1/2" x 30" ALLUM. CAP WITH A 2 1/2" ALLUM. CAP.



Washington Plane Coordinates: Zone, Y, X
Order Accuracy: Derived From: X

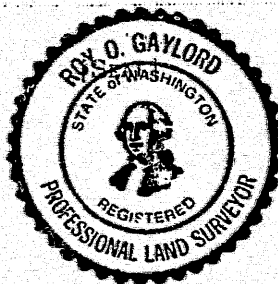
Pin Pinned on Photo No. Date Located at

SURVEYOR'S CERTIFICATE

This corner record correctly represents work performed by me or under my direction in compliance with the provisions of Chapter 50, Laws of 1973. Date 1-6-1983

Rick O. Gaylord
Signature

18731
Certificate No.
95285



AUDITOR'S CERTIFICATE

Filed for record this 19th day of January 1983 at 10:40 A.M. in Book 4/9 of Monuments at page 25 at the request of Terra Surveying

Shirley M. Allen By *B. Babcock*
County Auditor