

95282

LAND CORNER RECORD

SKAMANIA

County  
Corner Code No.

T 19.25  
N/A

T 4 N. R. RE, W.M.  
Segregated Surveys:

Name: CWWE 1/256

Corner No.:

BLM, BRS, Tract, Mining Claims, Indian Allotment, Federal Reserve, Townsite

1. History of Corner Establishment and Subsequent Restoration:

H.F. DONNELLY SET COR. IN 1953

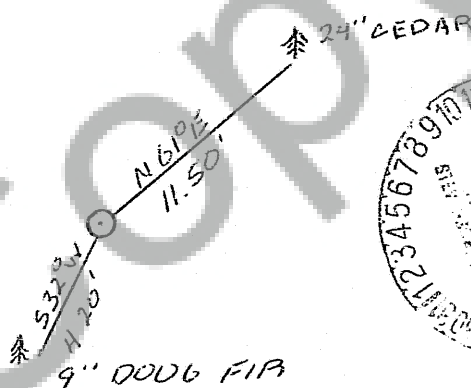
2. Description of Evidence Found:

FOUND DONNELLY'S 1 1/2" PIPE BEARING  
N 22-59-23 E A DISTANCE OF 20.23' FROM  
OUR SET POINT.

3. Describe Monument, Accessories and Corollary Data to Perpetuate this Corner Location. Diagram corner and indicate meridian and reference to map of record. Surveyor's Field Book No.

Page No. 10 Date of work 12/82

SET A 2 1/2" x 30' ALUM. PIPE WITH A  
2 1/2" ALUM. CAP.



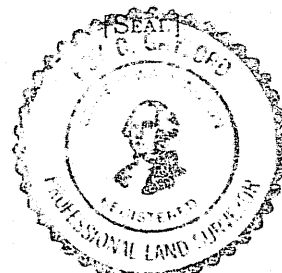
Washington Plane Coordinates: Zone, Y  
Order Accuracy. Derived From:

Pin Pointed on Photo No. Date Located at

SURVEYOR'S CERTIFICATE

This corner record correctly represents work performed by me or under my direction in compliance with the provisions of Chapter 50, Laws of 1973. Date 1-6-1983

Signature: [Handwritten Signature] Certificate No. 18731  
95282



AUDITOR'S CERTIFICATE

Filed for record this 19th day of January 1983 at 10:40 A.M. In Book 4/9 of Monuments at page 22 at the request of

Peru Surveying  
Mary M. Altman by B. Babcock  
County Auditor