

95280

LAND CORNER RECORD

SKAMANIA

County Corner Code No. T-17

T 4 N. R. 9 E W.M. Segregated Surveys:

Name: ONE-QUARTER Corner No.: S.L.C. 115, Tract, Mining Claim, Indian Allotment, Federal Reserve, Townsite

1. History of Corner Establishment and Subsequent Restoration.

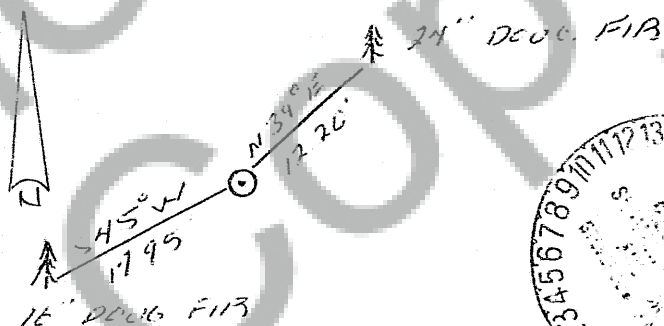
CORNER ORIGINALLY ESTABLISHED BY DEPUTY SURVEYOR SALOB RICHARDSON UNDER CONTRACT 383 IN OCT.-NOV 1892. OLSEN ENGINEERING SINGLE PROPORTIONED COR. IN 1971

2. Description of Evidence Found.

FOUND OLSEN ENGINEERING 5/8" X 30" I.R. FOUND NO ORIGINAL EVIDENCE.

3. Describe Monument, Accessions and Corollary Data to Perpetuate this Corner Location. Diagram corner and indicate meridian and reference to map of record. Surveyor's Field Book No. 6 Page No. 13 Date of work 12/82

SET A 2 1/2" X 30" ALUMI PIPE WITH A 2 1/2" ALUMI CAP OVER OLSEN I.R.



Washington Plane Coordinates: Zone Y Order accuracy. Derived From

Printed on Photo No. Date Located at

SURVEYOR'S CERTIFICATE

This corner record correctly represents work performed by me or under my direction in compliance with the provisions of Chapter 50, Laws of 1973 Date 1-6-1983

Signature of Roy A. Gaylord, Certificate No. 18231

95280



AUDITOR'S CERTIFICATE

Filed for record this 19th day of January 1983 at 10:40 A.M. In Book 4/9 of Monuments at page 20 at the request of Terra Surveying

Signature of Gary M. Olson by B. Babcock, Dep. County Auditor