

95002

LAND CORNER RECORD

10 1/11
15 1/14

SKAMANIA County

T 7 N. R 5 E W.M.
Segregated Surveys:

Corner Code No. J-17

Name: _____ Corner No.: _____
DLC, HES, Tract, Mining Claim, Indian Allotment, Federal Reserve, Townsite.

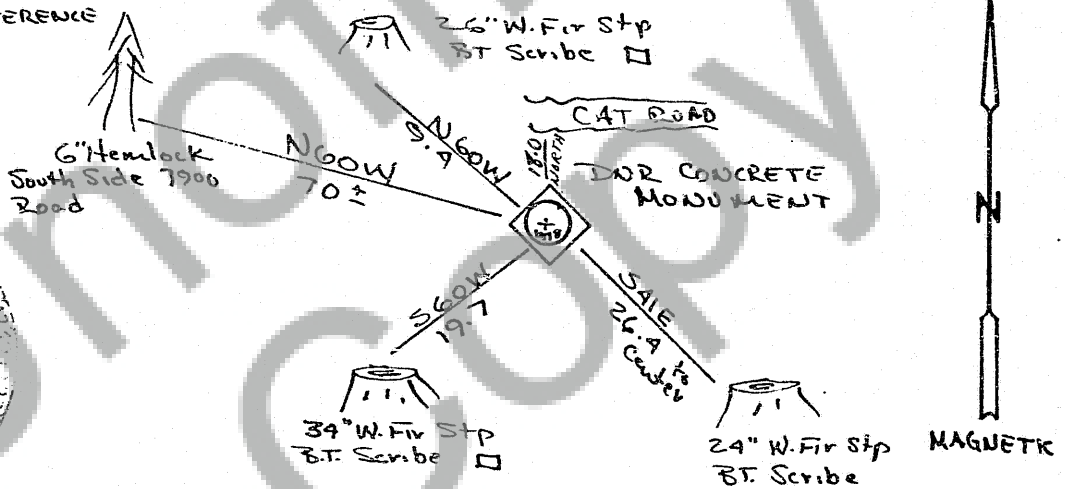
1. History of Corner Establishment and Subsequent Restoration: GLO. DNR Conc Mon Set 7-12-70 by C.E. Whitten. He found all BT's with scribing except Section 11 BT. Set monument by arcing the GLO distances from the centers of those BT's.

2. Description of Evidence Found: DNR Concrete Monument stamped 1970
 ① 26" W. Fir stump N60W 9.4 BT. Visible scribe } DNR REFERENCE PLATE
 ② 34" W. Fir stump S60W 19.7 BT. " " }
 ③ 24" W. Fir stump S41E 26.4 BT. " " Distance to Center

GLO
 ① 16" W. Fir N64 3/4 W 15 links
 ② 22" W. Fir S66 W 32 links
 ③ 16" W. Fir S33 1/2 E 41 links

3. Describe Monument, Accessories and Corollary Data to Perpetuate this Corner Location. Diagram corner and indicate meridian and reference to map of record. Surveyor's Field Book No. 9-81 Page No. 7 Date of work 17 Nov 82

DNR REFERENCE PLATE.

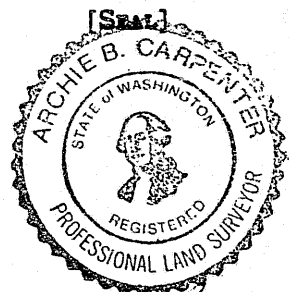


Washington Plane Coordinates: _____ Zone, Y _____, X _____
 Order Accuracy. Derived From: _____
 Pin Pointed on Photo No. _____ Date _____ Located at _____

SURVEYOR'S CERTIFICATE

This corner record correctly represents work performed by me or under my direction in compliance with the provisions of Chapter 50 Laws of 1973 Date 8 Nov 82

Signature: Archie B. Carpenter Certificate No. 16196



AUDITOR'S CERTIFICATE

Filed for record this 14 day of Nov 1982 at 7:11 P.M. in Book 7/5 of Longview at page 52 at the request of

Archie B. Carpenter
 County Auditor