

95001

LAND CORNER RECORD

16 1/15

T 7 N. R. 5E . W.M. SKAMANIA County
Segregated Surveys: Corner Code No. L-13
Name: Corner No.:
DLC, HES, Tract, Mining Claim, Indian Allotment, Federal Reserve, Townsite.

1. History of Corner Establishment and Subsequent Restoration: GLO - STATE DNR
Set Conc Mon in 1978 From 1 BT.

2. Description of Evidence Found: DNR STANDARD CONC MON STAMPED 1978

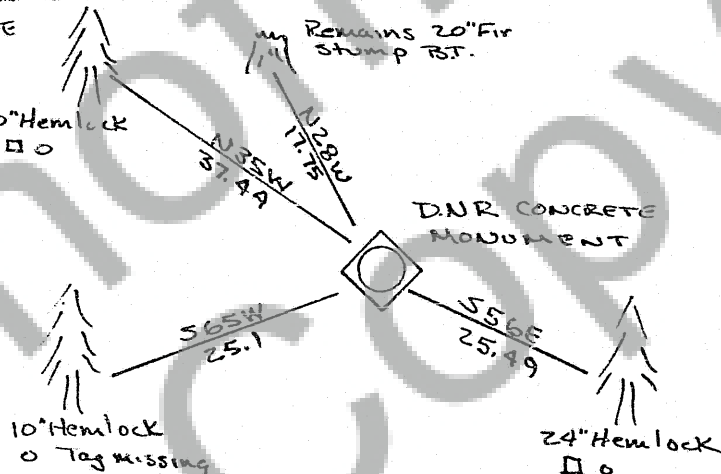
Remains 20" Fir Stump N28W 17.75 to FACE. BT Scribe visible. BT TAG
GLO N24 3/4 W 27 links.

10" Hemlock S65W 25.1
24" Hemlock S56E 25.49 } DNR TAG & NAILS
20" Hemlock N35W 37.44 }

3. Describe Monument, Accessories and Corollary Data to Perpetuate this Corner Location. Diagram corner and indicate meridian and reference to map of record. Surveyor's Field Book No. 9-81 Page No. 9 Date of work 18 Nov 81

REFERENCE PLATE
ALUMINUM NAIL

DNR REFERENCES

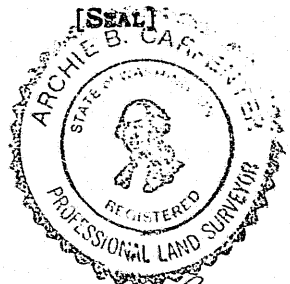


Washington Plane Coordinates: Zone, Y, X
Order Accuracy. Derived From:
Pin Pointed on Photo No. Date Located at.

SURVEYOR'S CERTIFICATE

This corner record correctly represents work performed by me or under my direction in compliance with the provisions of Chapter 50, Laws of 1973. Date 8 Nov 81

Signature Archie B. Carpenter Certificate No. 16126



AUDITOR'S CERTIFICATE

Filed for record this 16 day of Nov 1981 at 2 P.M. In Book 7/5 of Washington at page 51 at the request of

Harry M. (Cress) County Auditor