

LAND CORNER RECORD

SKAMANIA County

15 14
22 23

T 7 N. R. 5 E . W.M.
Segregated Surveys:

Corner Code No. N-17

Name

Corner No.:

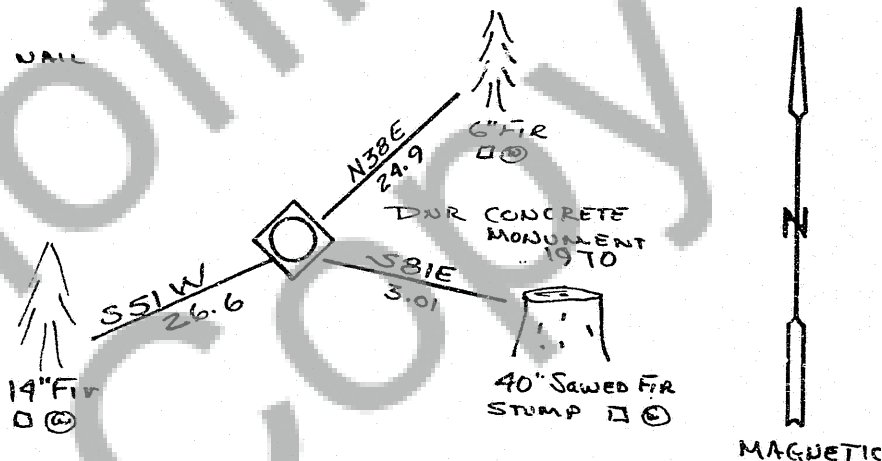
DLC, HES, Tract, Mining Claim, Indian Allotment, Federal Reserve, Townsite.

1. History of Corner Establishment and Subsequent Restoration: GLO DNR MONUMENT SET IN 1975 BY J.E. THOMAS and others. No other information available as there records indicate field book lost. All BT'S are in evidence. NW and SW trees are down and out of position. Scribing is Knife scribe.

2. Description of Evidence Found: DNR Concrete Monument with #5 rebar on NE side.
36" SAWED Fir Stump N15E 69 links. Face healed and cut open. Portion of 5' IS visible
38" Sawed Fir Stump S41 1/2 E 52 links. Face was healed and removed. Scribe visible "V RSE S 23"
6" Fir N38E 24.9
14" Fir S51W 26.6

3. Describe Monument, Accessories and Corollary Data to Perpetuate this Corner Location. Diagram corner and indicate meridian and reference to map of record. Surveyor's Field Book No. 9-81 Page No. 1 Date of work 30 Sept 82

- Reference Plate
1/4 x 2 1/4 GALVANIZED NAIL



Washington Plane Coordinates: Zone, Y, X
Order Accuracy. Derived From:

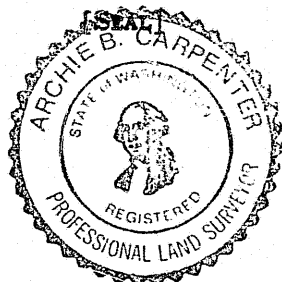
Pin Pointed on Photo No. Date Located at

SURVEYOR'S CERTIFICATE

This corner record correctly represents work performed by me or under my direction in compliance with the provisions of Chapter 50, Laws of 1973. Date 8 Nov 82

Signature Archie B. Carpenter

Certificate No. 16196



AUDITOR'S CERTIFICATE

Filed for record this 16 day of Nov 1982 at 2 P. M. In Book 115 of 115 at page 50 at the request of

Signature of County Auditor