

94521

BOOK 7/3 PAGE 44

RES 20-1808(9-77)

LAND CORNER RECORD

SKAMANIA

County Corner Code No. L-9

T 7 N, R 5E, W.M.

Segregated Surveys:

Name: WITNESS CORNER NORTH OF E 1/4 SECTION 17 Corner No.: WC
DLC, HES, Tract, Mining Claim, Indian Allotment, Federal Reserve, Townsite NORTH OF E 1/4 COR.

1. History of Corner Establishment and Subsequent Restoration:

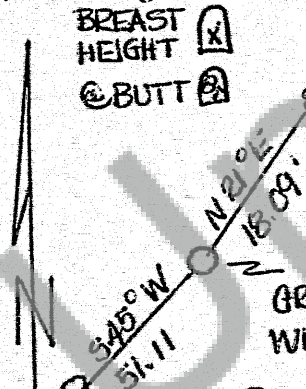
GOVERNMENT LAND OFFICE SURVEY

2. Description of Evidence Found:

NONE



3. Describe Monument, Accessories and Corollary Data to Perpetuate this Corner Location. Diagram corner and indicate meridian and reference to map of record. Surveyor's Field Book No. 761-2 Page No. 1 Date of work 7-19-82



SCRIBED "X" & "BT" ON ROOT SYSTEM OF 15" HEMLOCK GROWING ON 40" HEMLOCK STUMP DUE TO THE LACK OF TREES IN AREA.

SET 2 1/2" ALUM. PIPE 26" IN GROUND IN MOUND OF STONE WITH 2 1/2" ALUM. CAP MARKED;

NEW BT'S HAVE; FACE @ BUTT & @ BREAST HT. 54-3 & 54-9 SIGNS 6" ORANGE BAND PAINTED AROUND TREE & FACES PAINTED.

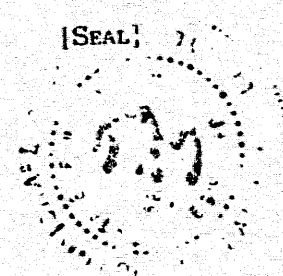
19" HEMLOCK SCRIBED BREAST HEIGHT @ BUTT
T7N R5E WC 1/4 S17 1/2 S16 1982 LS15652 Zone, Y

NOTE! HORZ. DISTANCES TAKEN FROM MON TO BRASS SURVEY TAGS (LS 15652) NAILED IN TOP CIRCLE OF "B'S".

Washington Plane Coordinates: _____
Order Accuracy. Derived From: _____
Pin Pointed on Photo No. _____ Date _____ Located at _____

SURVEYOR'S CERTIFICATE

This corner record correctly represents work performed by me or under my direction in compliance with the provisions of Chapter 50, Laws of 1973. Date July 24, 1982
Signature: Michael G. [unclear] Certificate No. LS15652



AUDITOR'S CERTIFICATE

Filed for record this 5TH day of AUGUST 1982 at 10:45 A.M. In Book 7/3 of RECORDS at page 44 at the request of MIKE NOBLE & ASSOCIATES
J. M. [unclear] County Auditor