

LAND CORNER RECORD

SKAMANIA

County Corner Code No. L-9

T 7 N, R 5E, W.M.
Segregated Surveys:

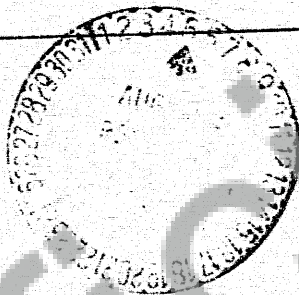
Name: WITNESS CORNER TO SOUTH OF E 1/4 SECTION 17 Corner No.: W.C.
DLC, HES, Tract, Mining Claim, Indian Allotment, Federal Reserve, Townsite SOUTH OF E 1/4

1. History of Corner Establishment and Subsequent Restoration:

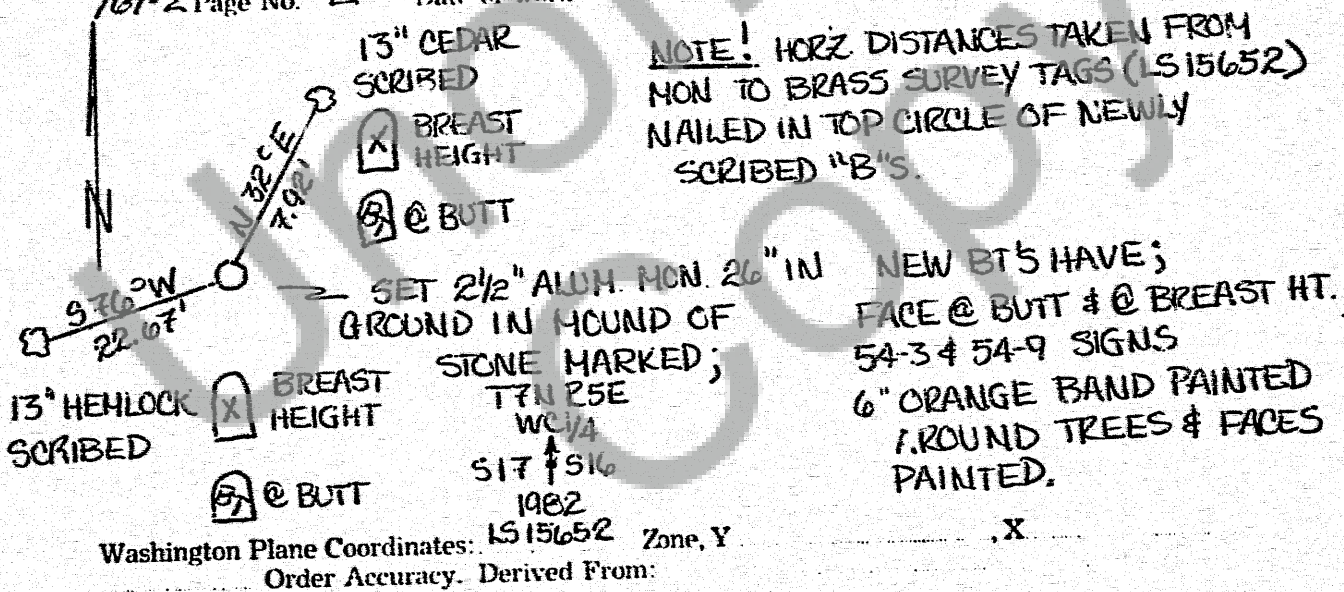
NONE

2. Description of Evidence Found:

NONE



3. Describe Monument, Accessories and Corollary Data to Perpetuate this Corner Location. Diagram corner and indicate meridian and reference to map of record. Surveyor's Field Book No. 161-2 Page No. 2 Date of work 7-19-82

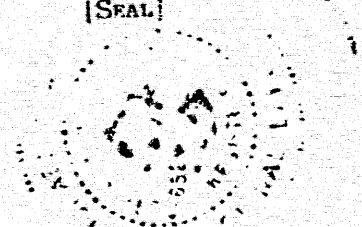


SURVEYOR'S CERTIFICATE

This corner record correctly represents work performed by me or under my direction in compliance with the provisions of Chapter 50, Laws of 1973. Date July 24, 1982

Signature: Michael G. Hollo Certificate No. LS 15652

[SEAL]



AUDITOR'S CERTIFICATE

Filed for record this 5th day of AUGUST 1982 at 10:40 A.M. In Book 715 of RECORDS at page 43 at the request of

Signature: J.M. [unclear] County Auditor