

94519

U.S.F.S.

RES 20-1808(9-77)

7/5 42

LAND CORNER RECORD

SKAMANIA

County

T 7 N, R 5E, W.M.

Corner Code No. P-5

Segregated Surveys:

Name: WEST 1/4 CORNER SECTION TWENTY

Corner No. W/4

DLC, HES, Tract, Mining Claim, Indian Allotment, Federal Reserve, Townsite

1. History of Corner Establishment and Subsequent Restoration.

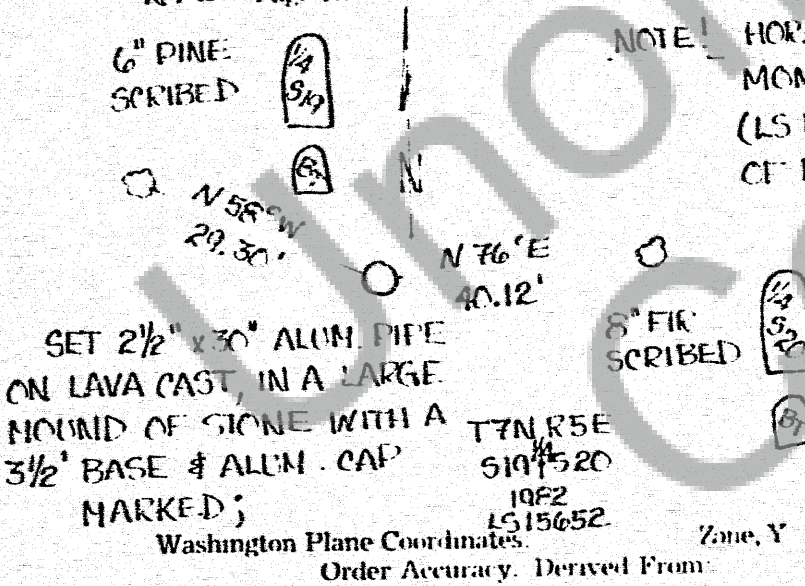
GOVERNMENT LAND OFFICE SURVEY

2. Description of Evidence Found

NONE



3. Describe Monument, Accessories and Corrobory Data to Perpetuate this Corner Location. Diagram corner and indicate meridian and reference to map of record. Surveyor's Field Book No. 161-2 Page No. 3 Date of work 7 27 82



NOTE! HORZ. DISTANCES TAKEN FROM MON. TO BRASS SURVEY TAGS (LS 1562) NAILED IN TOP CIRCLE OF NEWLY SCRIBED "B'S."

NEW ET'S HAVE;
6" ORANGE BAND PAINTED AROUND TREE & FACES PAINTED.
54-3 & 54-4 U.S.F.S. SIGNS

Pin Pointed on Photo No. Date Located at

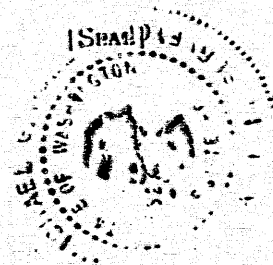
SURVEYOR'S CERTIFICATE

This corner record correctly represents work performed by me or under my direction in compliance with the provisions of Chapter 50, Laws of 1973, Date July 31, 1982

Signature: Michael G. Hobbs

Certificate No. LS15652

Certificate No.



AUDITOR'S CERTIFICATE

Filed for record this 5th day of AUGUST 1982 at 10:35 AM. In Book 76 of MONUMENTS at page 42 at the request of

WILEY HOBBS & ASSOCIATES, INC

W. M. Wilson by A. New, Dep. County Auditor