

94491

RES 20-1808(9-77)

U.S.F.S.
7/5 1982 41

LAND CORNER RECORD

SKAMANIA

Cou. Code No. G-25

T 7 N, R. 5E, W.M.
Segregated Surveys:

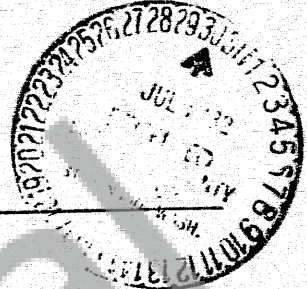
Name: E/4 CORNER SECTION 12

Corner No.: E/4-12

DLC, HES, Tract, Mining Claim, 1/4, 1/2, 3/4, Allotment, Federal Reserve, Townsite.

1. History of Corner Establishment and Subsequent Restoration:

ORIGINALLY SET BY G.L.O.
RESTORED BY B.L.M. IN 1961



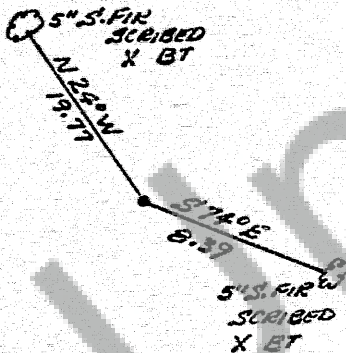
2. Description of Evidence Found:

B.L.M. MONUMENT W/ BRASS CAP MARKED

1/4
S12157
TTN
R5E R6E
1961

ORIGINAL BTS: 17" FIRE STRIP (Vis. Scribe) S130E 23.76
26" DOWN FIRE (FACE BURIED) USFS Loc. Poster ATTACHED
B.L.M. 8" S. FIR (Vis. Scribe) N450E 13.18

3. Describe Monument, Accessories and Corollary Data to Perpetuate this Corner Location. Diagram corner and indicate meridian and reference to map of record. Surveyor's Field Book No. 161 Page No. 12 Date of work 9-23-81



6" RED BAND PAINTED AROUND BTS
U.S.F.S. 51-3454-4 SIGNS NAILED TO
BTS.

NOTE: MEASUREMENT TAKEN HORIZ. FROM
MONUMENT TO BRASS SURVEY TAB (US 15652)
NAILED IN TOP CIRCLE OF NEWLY SCRIBED
"B"

Washington Plane Coordinates: Zone, Y, X
Order Accuracy. Derived From:

Pin Pointed on Photo No. Date Located at

SURVEYOR'S CERTIFICATE

This corner record correctly represents work performed by me or under my direction in compliance with the provisions of Chapter 50, Laws of 1973. Date July 24, 1982

Signature: Michael G. Hobbs Certificate No. 2515252



AUDITOR'S CERTIFICATE

Filed for record this 30th day of JULY 1982 at 2:00 P.M. In Book 715 of MONUMENTS at page 41 at the request of MICHAEL G. HOBBS

J.M. Edson by J. Davis
County Auditor

Form prescribed by Bureau of Surveys and Maps pursuant to the provisions of Section 5 (2), Chapter 50, Laws of 1973

Volcano III