

94488

USFS

REG CO-1808(9-77)

BOOK 715 PAGE 38

LAND CORNER RECORD

SKAMANIA

County

T 7 N, R 5E, W.M.

Corner Code No. C-13

Segregated Surveys:

Name: WEST 1/4 CORNER SECTION 3

Corner No.: W 1/4

DLC, HES, Tract, Mining Claim, 1/4 Acre Allotment, Federal Reserve, Townsite.

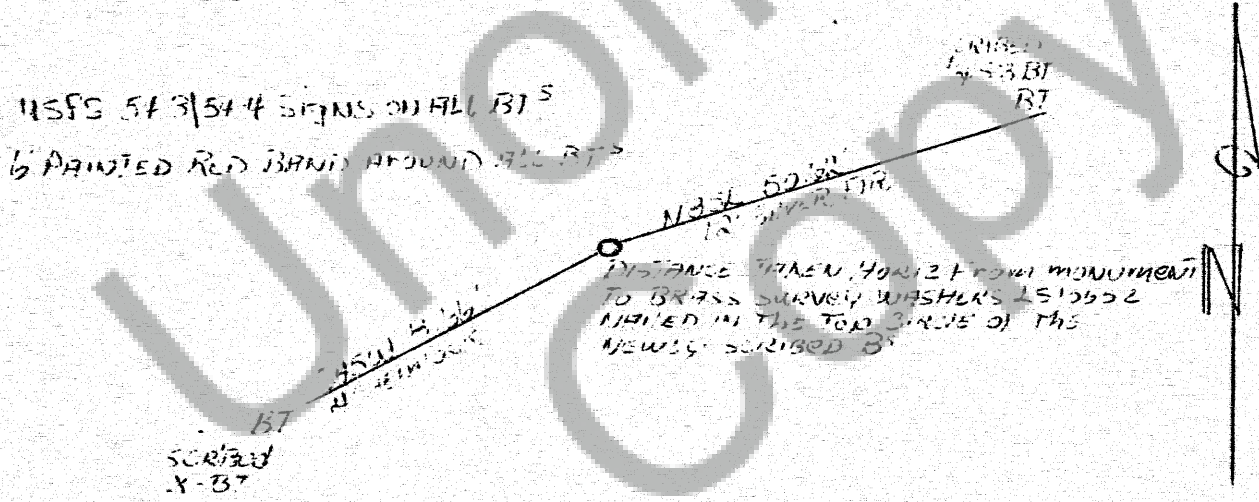


1. History of Corner Establishment and Subsequent Restoration:
CORNER ORIGINALLY SET BY GOVERNMENT LAND OFFICE SURVEY
RESTORATION BY WASHINGTON DNR 1970

2. Description of Evidence Found:
4x4 DNR CORNER MEASUREMENT WITH BRASS CAP MARKED 7 MAR 52
454/53 1970

38" CEDAR STUMP 54" W 8.58' - USABLE SCRIBE DNR TAG
20" SILVER FIR STUMP NITE 2046' USABLE SCRIBE DNR TAG - BADLY DETERIORATED
RP
12" HEMLOCK #3481 4.13' (STUMP) - STATE TAG

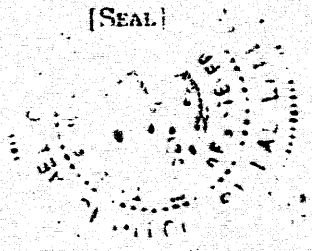
3. Describe Monument, Accessories and Corollary Data to Perpetuate this Corner Location. Diagram corner and indicate meridian and reference to map of record. Surveyor's Field Book No. 161-2 Page No. 17 Date of work 11-25-81



Washington Plane Coordinates: Zone, Y, X
Order Accuracy. Derived From:
Pin Pointed on Photo No. Date Located at

SURVEYOR'S CERTIFICATE

This corner record correctly represents work performed by me or under my direction in compliance with the provisions of Chapter 50, Laws of 1973. Date July 24, 1982
Signature: Michael G. Hobbs Certificate No. LS15652



AUDITOR'S CERTIFICATE

Filed for record this 30th day of JULY 1982 at 2:00 P.M. In Book 715 of MONUMENTS at page 38 at the request of MICHAEL G. HOBBS
J.M. Gibson by A. News County Auditor