

LAND CORNER RECORD

SKAMMIAH

County

T 7 N, R 5 E, W.M.

Corner Code No. G-H-25

Segregated Surveys:

Name: LINE TREE, S 1/2 E LINE SECTION 12.

Corner No.:

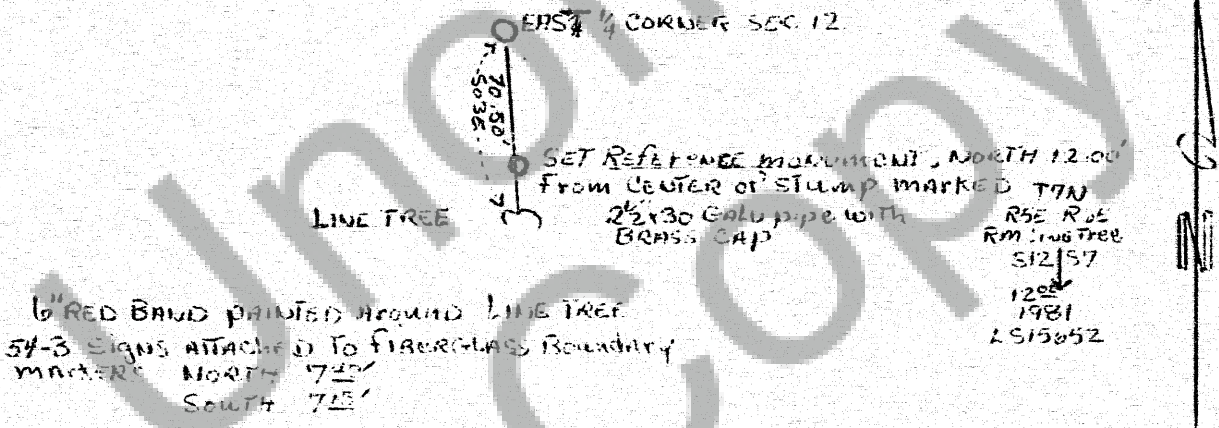
DLC, HES, Tract, Mining Claim, 1/4 in Allotment, Federal Reserve, Townsite.

1. History of Corner Establishment and Subsequent Restoration:
ORIGINALLY SET BY GOVERNMENT LAND OFFICE SURVEY



2. Description of Evidence Found:
60" FIR STUMP - ORIGINAL NOTCH ON SOUTH SIDE, 10.50' S 03° E OF THE LAST 1/4 CORNER SECTION 12 (S10 CALLS 103')

3. Describe Monument, Accessories and Corollary Data to Perpetuate this Corner Location. Diagram corner and indicate meridian and reference to map of record. Surveyor's Field Book No. 101-1 Page No. 3 Date of work 10-27-81



Washington Plane Coordinates: Zone, Y, X
Order Accuracy. Derived From:

Pin Pointed on Photo No. Date Located at:

SURVEYOR'S CERTIFICATE

This corner record correctly represents work performed by me or under my direction in compliance with the provisions of Chapter 50, Laws of 1973. Date July 24, 1982

Signature: Michael G. Hobbs Certificate No. LS15652

[SEAL]

AUDITOR'S CERTIFICATE

Filed for record this 30th day of JULY 1982 at 1:45 P.M. in Book 715 of MONUMENTS at page 34 at the request of

MICHAEL G. HOBBS

J.M. Olson by J. News County Auditor