

LAND CORNER RECORD

T 7 N. R 5E, W.M. **SKAMANIA** County
Segregated Surveys: Corner Code No. **B-C-9**
Name: **LINE TREE - NORTH 1/2 EAST LINE SECTION 5** Corner No. **LINE TREE**
DLC, HES, Tract, Mining Claim, 1/4 Acre Allotment, Federal Reserve, Townsite.

1. History of Corner Establishment and Subsequent Restoration.

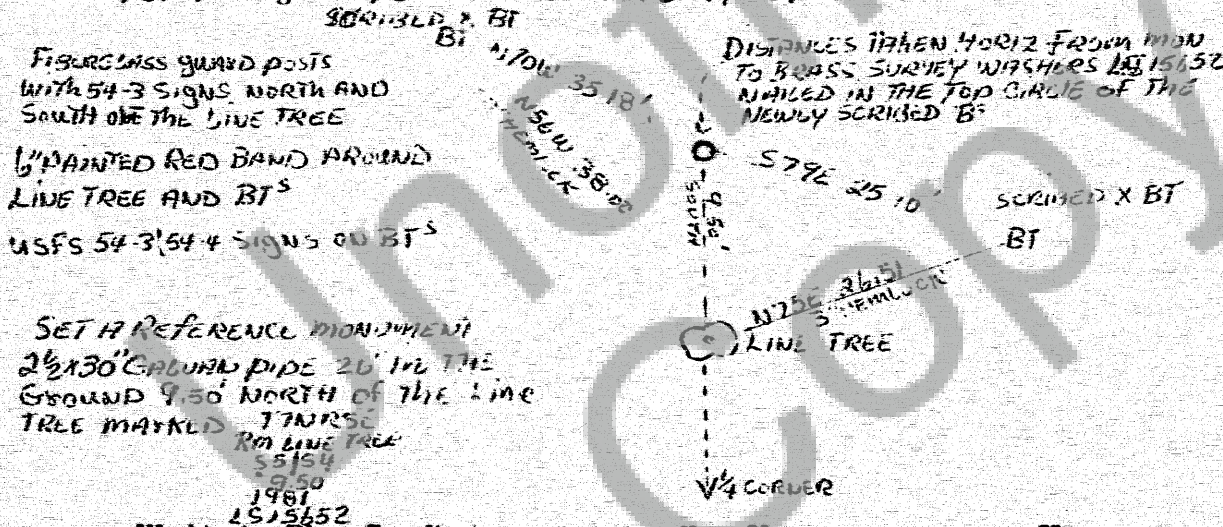
ORIGINALLY MARKED BY GOVERNMENT LAND OFFICE SURVEY



2. Description of Evidence Found:

54" CEDAR STUMP 2 NOTCHES IN NORTH AND 2 NOTCHES IN SOUTH EDGE
(MATCHES DISTANCE (10) FROM W.C. 1/4 CORNER)

3. Describe Monument, Accessories and Corollary Data to Perpetuate this Corner Location. Diagram corner and indicate meridian and reference to map of record. Surveyor's Field Book No. 161-1 Page No. 10 Date of work 10-29-81



Washington Plane Coordinates: _____ Zone, Y _____, X _____
Order Accuracy. Derived From: _____
Pin Pointed on Photo No. _____ Date _____ Located at _____

SURVEYOR'S CERTIFICATE

This corner record correctly represents work performed by me or under my direction in compliance with the provisions of Chapter 50, Laws of 1973. Date July 24, 1982
Signature: Michael G. Hobbs Certificate No. LS 15652



AUDITOR'S CERTIFICATE

Filed for record this 30th day of JULY 1982 at 1:10 P.M. In Book 7/5 of MONUMENTS at page 27 at the request of MICHAEL G. HOBBS
J.M. Olson County Auditor