

LAND CORNER RECORD

SKAMANIA County
T 0 N N, R 0 E, W.M. Corner Code No. J-7
Segregated Surveys:
Name: NORTH QUARTER CORNER SECTION SEVENTEEN Corner No.: N 1/4 COR. SEC. 17
DLC, HES, Tract, Mining Claim, Indian Allotment, Federal Reserve, Townsite.

1. History of Corner Establishment and Subsequent Restoration:

GOVERNMENT LAND OFFICE SURVEY (1921)



2. Description of Evidence Found:

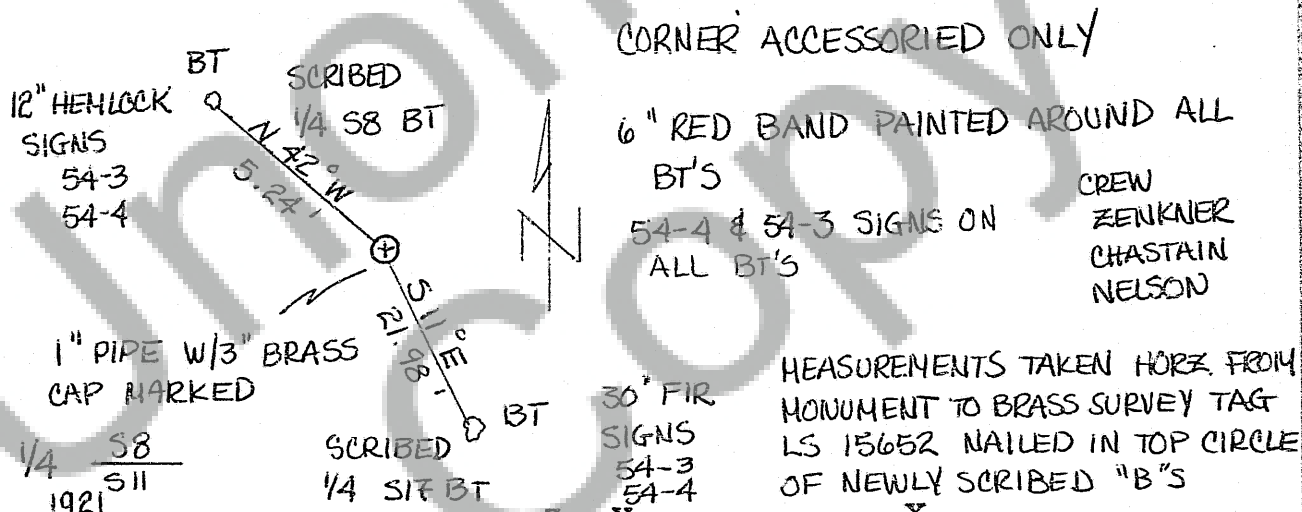
BROKEN OFF STUB OF OBT. TO NW IS STILL VISIBLE

A.P. TAGS N 42° W 1/3 CHAIN 30" FIR
B.N. N 40° E 1/4 CHAIN 12" HEMLOCK

MONUMENT FOUND IS A 1" PIPE W/3" BRASS CAP MARKED

1/4 S 8
1921 S 11

3. Describe Monument, Accessories and Corollary Data to Perpetuate this Corner Location. Diagram corner and indicate meridian and reference to map of record. Surveyor's Field Book No. 151 Page No. 3 Date of work 7-16-81



Washington Plane Coordinates: _____ Zone, Y _____, X _____
Order Accuracy. Derived From: _____
Pin Pointed on Photo No. _____ Date _____ Located at _____

SURVEYOR'S CERTIFICATE

This corner record correctly represents work performed by me or under my direction in compliance with the provisions of Chapter 50, Laws of 1973. Date August 10, 1981

Signature

Registered

Noted. Dir.

Noted

Required x

Mailed

Certificate No.

AUDITOR'S CERTIFICATE

Filed for record this 31st day of August 1981 at 1:00 P.M. In Book 1/6 of Monuments at page 4 at the request of

Hahn & Associates - Chehalis, Wa

D. J. Messenger by A. Davis
County Auditor