

FILED
JAN 12 1982UNITED STATES DISTRICT COURT FOR THE
WESTERN DISTRICT OF WASHINGTON

UNITED STATES OF AMERICA,

Plaintiff,

vs.

1.78 ACRES OF LAND, MORE OR LESS,
SITUATE IN SKAMANIA COUNTY, STATE
OF WASHINGTON, AND CITY OF NORTH
BONNEVILLE, A MUNICIPAL CORPORATION
OF THE STATE OF WASHINGTON, ET AL.,
AND OTHER UNKNOWN OWNERS,

Defendants.

DECLARATION
OF
TAKING

CIVIL NO. _____

C82-11 T

TO THE HONORABLE
THE UNITED STATES DISTRICT COURT:

I, John O. [unclear], Secretary of the Army, do

hereby declare that:

1. The land hereinafter described is taken under and in accordance with the authority set forth in Schedule "A" annexed hereto and made a part hereof.

2. The public uses for which said land is taken are also set forth in said Schedule "A".

3. A general description of the tracts of land being taken, the estimated just compensation therefor, and the estate taken for said public uses are set forth in Schedule "B" annexed hereto and made a part hereof.

4. A plan showing the land taken is annexed hereto as Schedule "C" and made a part hereof.

5. The gross sum estimated by me as just compensation for all of said land which aggregates 1.78 acres, with all buildings and improvements thereon and all appurtenances thereto and including any and all interests hereby taken in said land is ONE AND NO/100 DOLLARS (\$1.00), together with substitute facilities constructed by the Government, which sum I cause to be deposited herewith in the registry of the court for the use and benefit of the persons entitled thereto. I am of the opinion that the ultimate award

Page 1

Certified to be a true and
correct copy of the original
filed in my office.JAN 12 1982
DeputyBy [Signature]
DeputyROLL 132.3
DAILY RECORDINGS
COMMISSIONERS
MARRIAGE APPLICATIONS

for said land probably will be within any limits prescribed by law on the price to be paid therefor.

IN WITNESS WHEREOF, the United States of America, by its Secretary of the Army, thereunto authorized, has caused this declaration to be signed in its name by said John O. Marsh Jr., Secretary of the Army, this 17th day of December, A.D., 1941, in the City of Washington, District of Columbia.

John O. Marsh Jr.

Secretary of the Army

ROLL 182-3
DAILY RECORDINGS
COMMISSIONERS
MARRIAGE APPLICATIONS

SCHEDULE "A"

AUTHORITY FOR TAKING:

The authority for the taking of the land is under and in accordance with the Act of Congress approved February 26, 1931 (46 Stat. 1421, 40, U.S.C. 258a), and acts supplementary thereto and amendatory thereof, and under the further authority of the Acts of Congress approved April 24, 1888 (25 Stat. 94, 33 U.S.C. 591), and March 1, 1917 (39 Stat. 948, 33 U.S.C. 701), which authorize the acquisition of land for flood control projects; the Act of Congress approved August 30, 1935 (49 Stat. 1028), which act authorizes the construction of the Bonneville Lock and Dam; the Act of Congress approved August 20, 1937 (50 Stat. 731), which act authorized completion, maintenance and operation of the project; Section 83 of the Act of Congress approved March 7, 1974 (Public Law 93-251), which authorized the relocation of the Town of North Bonneville. Funds will be available from the Energy and Water Appropriations Act of 1982, or if not enacted, a joint resolution of the Congress.

PUBLIC USES:

The public uses for which said land is taken are as follows: The said land is necessary to provide for the construction of a river improvement for the purposes of flood control, navigation and for other uses incident thereto. The said land has been selected by me for acquisition by the United States for use in connection with the construction and maintenance of the Second Powerhouse which must be provided at the Bonneville Dam, and for such other uses as may be authorized by Congress or by Executive Order.

L. 1180 11801

SCHEDULE "B"

Tract 2467

DESCRIPTION:

A tract of land situated in Section 22, Township 2 North, Range 7 East of the Willamette Meridian, Skamania County, Washington, being more particularly described as follows:

Commencing at a point on the Northerly line of the Evergreen Highway (State Highway No. 14) right-of-way which is 720.00 feet East of the West line of said Section 22, said point being the Southeast corner of a tract of land conveyed to W. H. Hilliard by deed recorded at Page 123 of Book V of Deeds, Records of Skamania County, Washington; thence North 00°48'00" West along the East line of said tract 674.00 feet to the point of beginning; thence continuing North 00°48'00" West 230.53 feet; thence North 89°47'21" East 200.00 feet; thence South 00°48'00" East 230.53 feet; thence North 89°47'21" West 120.00 feet; thence South 46°17'21" West 110.00 feet to the West line of a tract of land conveyed to Ted M. Cole by deed recorded at Pages 318 and 319 of Book 55 Deeds, Records of Skamania County, Washington; thence North 00°48'00" West along said line to the point of beginning.

The tract of land herein described contains 1.13 acres, more or less.

ESTATE TAKEN:

The fee simple title to the land included in Tract 2467.

Name and address of purported owner(s) for Tract 2467
Bonneville Lock and Dam
(Lake Bonneville)

City of North Bonneville,
a municipal corporation of
the State of Washington
City Hall
North Bonneville, Washington
98639
c/o Hon. Ernest Skala, Mayor

Unknown Owners

801 802

SCHEDULE "B"

Tract 2500

DESCRIPTION:

A tract of land situated in Section 21, Township 2 North, Range 7 East of the Willamette Meridian, Skamania County, Washington, being more particularly described as follows:

Commencing at the Northeast corner of said Section 21: thence South 1257.00 feet; thence West 38.93 feet to the Southerly right-of-way line of the Evergreen Highway (State Highway No. 14); thence South 09°00'00" West 160.00 feet to the point of beginning; thence North 81°00'00" West 150.00 feet; thence South 09°00'00" West 166.00 feet to the Northerly right-of-way line of the Spokane, Portland and Seattle Railway Company; thence Easterly along said right-of-way to a point which is South 09°00'00" West 179.00 feet to the point of beginning; thence North 09°00'00" East 179.00 feet to the point of beginning, said tract being designated as Lots 1, 2, 3, 4 and 5 of Block 6 of the unrecorded plat of the Town of North Bonneville, Washington.

Also including one-half of the adjacent streets and alleys.

The tract of land herein described contains 0.65 of an acre, more or less.

ESTATE TAKEN:

The fee simple title to the land included in Tract 2500.

Name and address of purported owners(s) for Tract 2500, Bonneville Lock and Dam (Lake Bonneville)

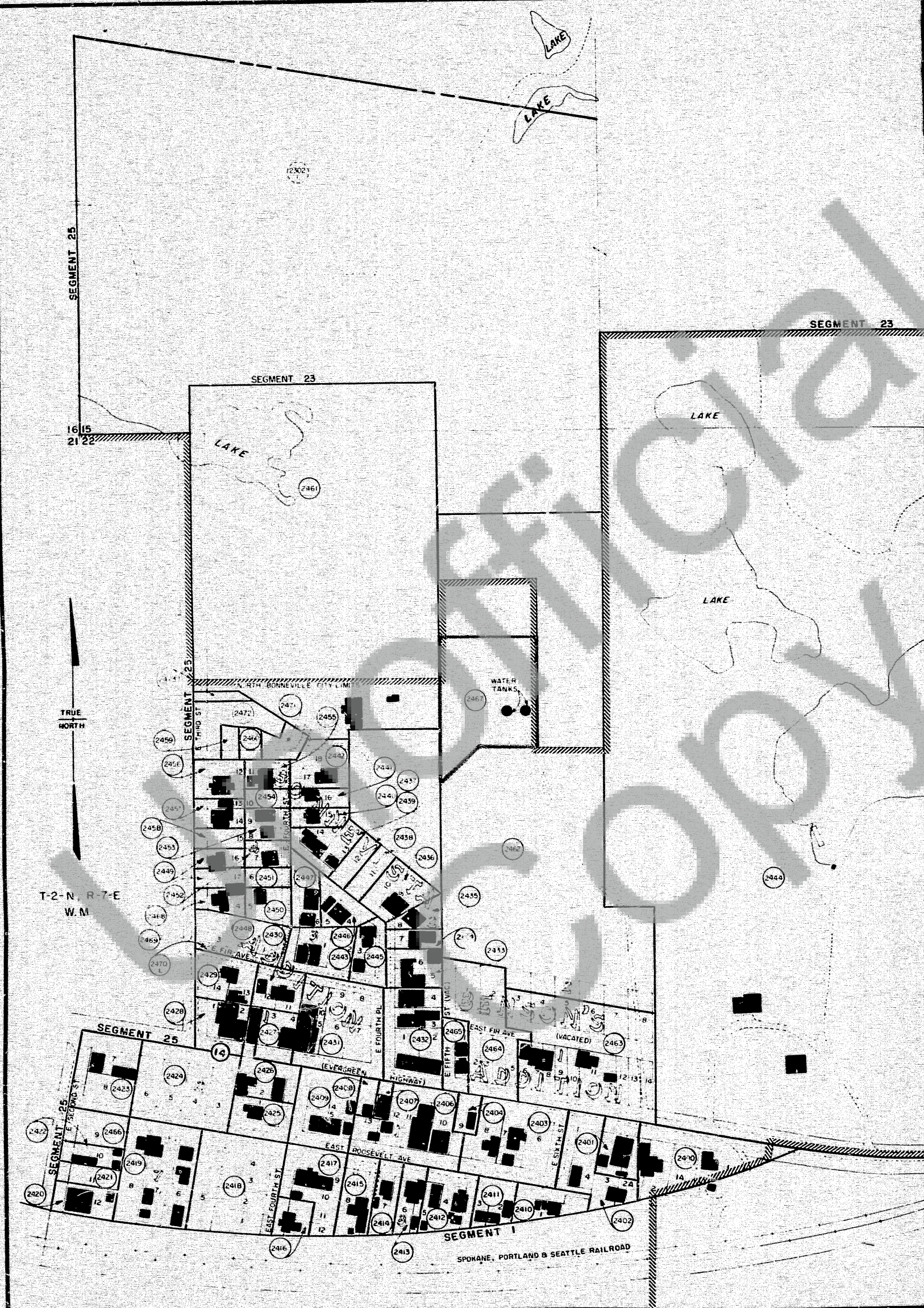
City of North Bonneville,
a municipal corporation of
the State of Washington
City Hall
North Bonneville, Washington
98639
c/o Hon. Ernest Skala, Mayor

Columbia Construction Company,
a Nevada corporation
whereabouts unknown

Unknown Owners

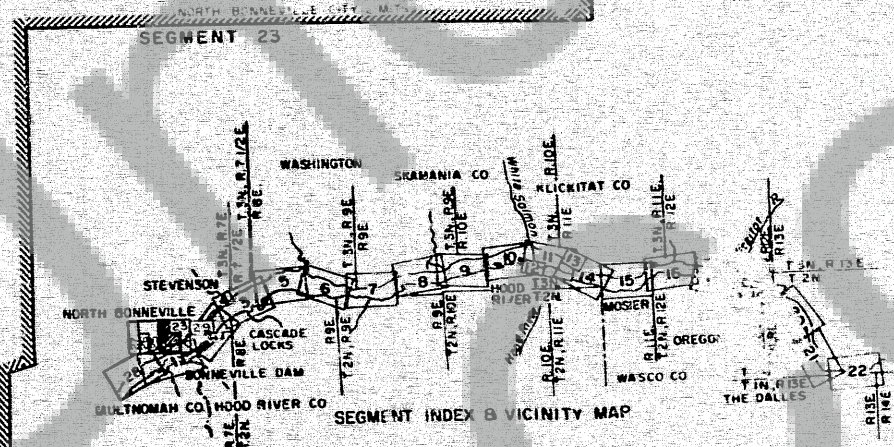
Total estimated compensation for Tract 2467 and Tract 2500 is \$1.00 together with the substitute municipal facilities in the relocated City of North Bonneville, Washington constructed by the United States.

ROLL 182.3
DAILY RECORDINGS
COMMISSIONERS
MARRIAGE APPLICATIONS



TRACT REGISTER

TRACT NO.	LAND OWNER	ACREAGE					REMARKS
		FEE	EASE	T	LIC.	PERMIT	
2302	WESLEY J. FIEDLER, ET AL						See Segment 23
2400	GILFRESH, J. SMITH	0.58					
2401	J. P. THOMAS, ET AL	0.22					
2402	CURTIS D. BARTON, ET AL	0.22					
2403	MAYNARD, B. BROWN	0.09					
2404	WILLIAM J. TON, ET AL	0.24					
2405	DELETED						
2406	ED M. COLE, ET AL	0.81					
2407	MARGORIE A. FINCH	0.10					
2408	WILLIAM G. TRACON	0.10					
2409	ESTHER VAN ARMAN	0.25					
2410	ALBERT E. GOODMAN, ET AL	0.14					
2411	JERRY R. RANSON, ET AL	0.10					
2412	HERBERT E. FLEMING, ET AL	0.10					
2413	VIRGIL J. ECHDALE	0.10					
2414	EDWARD A. ALWAY, ET AL	0.10					
2415	JOHN L. WILSON, ET AL	0.10					
2416	JOHN L. WILSON, ET AL	0.10					
2417	JOHN L. WILSON, ET AL	0.10					
2418	JOHN L. WILSON, ET AL	0.10					
2419	JOHN L. WILSON, ET AL	0.10					
2420	JOHN L. WILSON, ET AL	0.10					
2421	JOHN L. WILSON, ET AL	0.10					
2422	JOHN L. WILSON, ET AL	0.10					
2423	JOHN L. WILSON, ET AL	0.10					
2424	JOHN L. WILSON, ET AL	0.10					
2425	JOHN L. WILSON, ET AL	0.10					
2426	JOHN L. WILSON, ET AL	0.10					
2427	JOHN L. WILSON, ET AL	0.10					
2428	JOHN L. WILSON, ET AL	0.10					
2429	JOHN L. WILSON, ET AL	0.10					
2430	JOHN L. WILSON, ET AL	0.10					
2431	JOHN L. WILSON, ET AL	0.10					
2432	JOHN L. WILSON, ET AL	0.10					
2433	JOHN L. WILSON, ET AL	0.10					
2434	JOHN L. WILSON, ET AL	0.10					
2435	JOHN L. WILSON, ET AL	0.10					
2436	JOHN L. WILSON, ET AL	0.10					
2437	JOHN L. WILSON, ET AL	0.10					
2438	JOHN L. WILSON, ET AL	0.10					
2439	JOHN L. WILSON, ET AL	0.10					
2440	JOHN L. WILSON, ET AL	0.10					
2441	JOHN L. WILSON, ET AL	0.10					
2442	JOHN L. WILSON, ET AL	0.10					
2443	JOHN L. WILSON, ET AL	0.10					
2444	JOHN L. WILSON, ET AL	0.10					
2445	JOHN L. WILSON, ET AL	0.10					
2446	JOHN L. WILSON, ET AL	0.10					
2447	JOHN L. WILSON, ET AL	0.10					
2448	JOHN L. WILSON, ET AL	0.10					
2449	JOHN L. WILSON, ET AL	0.10					
2450	JOHN L. WILSON, ET AL	0.10					
2451	JOHN L. WILSON, ET AL	0.10					
2452	JOHN L. WILSON, ET AL	0.10					
2453	JOHN L. WILSON, ET AL	0.10					
2454	JOHN L. WILSON, ET AL	0.10					
2455	JOHN L. WILSON, ET AL	0.10					
2456	JOHN L. WILSON, ET AL	0.10					
2457	JOHN L. WILSON, ET AL	0.10					
2458	JOHN L. WILSON, ET AL	0.10					
2459	JOHN L. WILSON, ET AL	0.10					
2460	JOHN L. WILSON, ET AL	0.10					
2461	JOHN L. WILSON, ET AL	0.10					
2462	JOHN L. WILSON, ET AL	0.10					
2463	JOHN L. WILSON, ET AL	0.10					
2464	JOHN L. WILSON, ET AL	0.10					
2465	JOHN L. WILSON, ET AL	0.10					
2466	JOHN L. WILSON, ET AL	0.10					
2467	JOHN L. WILSON, ET AL	0.10					
2468	JOHN L. WILSON, ET AL	0.10					
2469	JOHN L. WILSON, ET AL	0.10					
2470	JOHN L. WILSON, ET AL	0.10					
2471	JOHN L. WILSON, ET AL	0.10					
2472	JOHN L. WILSON, ET AL	0.10					
2473	JOHN L. WILSON, ET AL	0.10					
2474	JOHN L. WILSON, ET AL	0.10					
2475	JOHN L. WILSON, ET AL	0.10					
2476	JOHN L. WILSON, ET AL	0.10					
2477	JOHN L. WILSON, ET AL	0.10					
2478	JOHN L. WILSON, ET AL	0.10					
2479	JOHN L. WILSON, ET AL	0.10					
2480	JOHN L. WILSON, ET AL	0.10					
2481	JOHN L. WILSON, ET AL	0.10					
2482	JOHN L. WILSON, ET AL	0.10					
2483	JOHN L. WILSON, ET AL	0.10					
2484	JOHN L. WILSON, ET AL	0.10					
2485	JOHN L. WILSON, ET AL	0.10					
2486	JOHN L. WILSON, ET AL	0.10					
2487	JOHN L. WILSON, ET AL	0.10					
2488	JOHN L. WILSON, ET AL	0.10					
2489	JOHN L. WILSON, ET AL	0.10					
2490	JOHN L. WILSON, ET AL	0.10					
2491	JOHN L. WILSON, ET AL	0.10					
2492	JOHN L. WILSON, ET AL	0.10					
2493	JOHN L. WILSON, ET AL	0.10					
2494	JOHN L. WILSON, ET AL	0.10					
2495	JOHN L. WILSON, ET AL	0.10					
2496	JOHN L. WILSON, ET AL	0.10					
2497	JOHN L. WILSON, ET AL	0.10					
2498	JOHN L. WILSON, ET AL	0.10					
2499	JOHN L. WILSON, ET AL	0.10					
2500	JOHN L. WILSON, ET AL	0.10					

THIS PRINT REDUCED
TO ONE-HALF SCALE

SEGMENT 23

SEGMENT 24

SEGMENT 25

SEGMENT 26

SEGMENT 27

SEGMENT 28

SEGMENT 29

SEGMENT 30

SEGMENT 31

SEGMENT 32

SEGMENT 33

SEGMENT 34

SEGMENT 35

SEGMENT 36

SEGMENT 37

SEGMENT 38

SEGMENT 39

SEGMENT 40

SEGMENT 41

SEGMENT 42

SEGMENT 43

SEGMENT 44

SEGMENT 45

SEGMENT 46

SEGMENT 47

SEGMENT 48

SEGMENT 49

SEGMENT 50

SEGMENT 51

SEGMENT 52

SEGMENT 53

SEGMENT 54

SEGMENT 55

SEGMENT 56

SEGMENT 57

SEGMENT 58

SEGMENT 59

SEGMENT 60

SEGMENT 61

SEGMENT 62

SEGMENT 63

SEGMENT 64

SEGMENT 65

SEGMENT 66

SEGMENT 67

SEGMENT 68

SEGMENT 69

SEGMENT 70

SEGMENT 71

SEGMENT 72

SEGMENT 73

SEGMENT 74

SEGMENT 75

SEGMENT 76

SEGMENT 77

SEGMENT 78

SEGMENT 79

SEGMENT 80

SEGMENT 81

SEGMENT 82

SEGMENT 83

SEGMENT 84

SEGMENT 85

SEGMENT 86

SEGMENT 87

SEGMENT 88

SEGMENT 89

SEGMENT 90

SEGMENT 91

SEGMENT 92

SEGMENT 93

SEGMENT 94

SEGMENT 95

SEGMENT 96

SEGMENT 97

SEGMENT 98

SEGMENT 99

SEGMENT 100

SEGMENT 101

SEGMENT 102

SEGMENT 103

SEGMENT 104

SEGMENT 105

SEGMENT 106

SEGMENT 107

SEGMENT 108

SEGMENT 109

SEGMENT 110

SEGMENT 111

SEGMENT 112

SEGMENT 113

SEGMENT 114

SEGMENT 115

SEGMENT 116

SEGMENT 117

SEGMENT 118

SEGMENT 119

SEGMENT 120

SEGMENT 121

SEGMENT 122

SEGMENT 123

SEGMENT 124

SEGMENT 125

SEGMENT 126

SEGMENT 127

SEGMENT 128

SEGMENT 129

SEGMENT 130

SEGMENT 131

SEGMENT 132

SEGMENT 133

SEGMENT 134

SEGMENT 135

SEGMENT 136

SEGMENT 137

SEGMENT 138

SEGMENT 139

SEGMENT 140

SEGMENT 141

SEGMENT 142

SEGMENT 143

SEGMENT 144

SEGMENT 145

SEGMENT 146

SEGMENT 147

SEGMENT 148

SEGMENT 149

SEGMENT 150

SEGMENT 151

SEGMENT 152

SEGMENT 153

SEGMENT 154

SEGMENT 155

SEGMENT 156

SEGMENT 157

SEGMENT 158

SEGMENT 159

SEGMENT 160

SEGMENT 161

SEGMENT 162

SEGMENT 163

SEGMENT 164

SEGMENT 165

SEGMENT 166

SEGMENT 167

SEGMENT 168

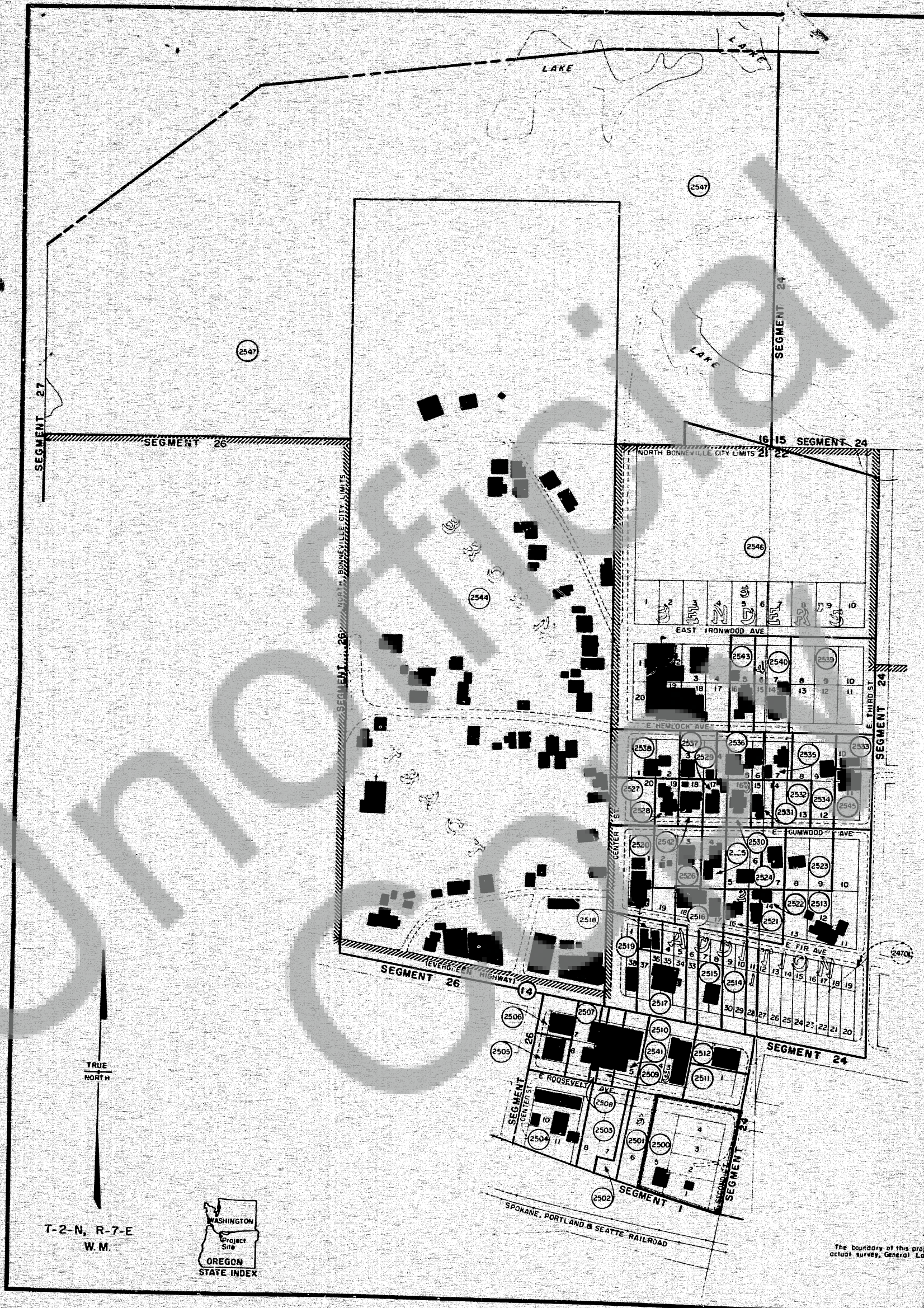
SEGMENT 169

SEGMENT 170

SEGMENT 171

SEGMENT 172

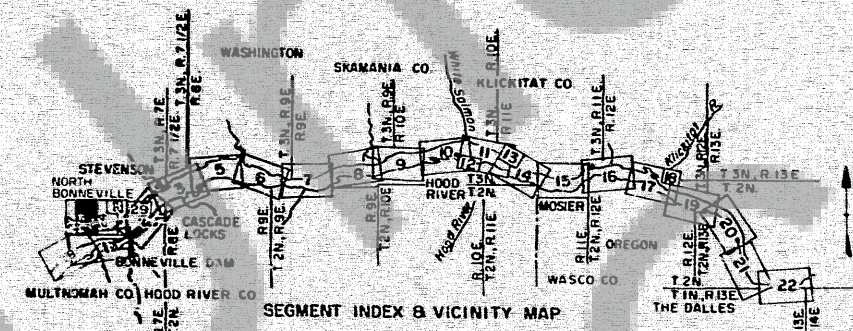
ROLL 182.3
DAILY RECORDINGS
COMMISSIONERS
MARRIAGE APPLICATIONS



TRACT REGISTER

TRACT NO.	LAND OWNER	ACREAGE					REMARKS
		FEE	EASEM T	LIC	PERMIT	TRANS	
2507	TOWN OF NORTH BONNEVILLE, ET AL	0.85					
2508	T. D. KIRKPATRICK, ET AL	0.22					
2509	PATRICIA FRANKLIN, ET AL	0.08					
2510	MARIL E. FLESTER, ET AL	0.70					
2511	JERRY L. RANDALL, ET AL	0.24					
2512	JEAN R. BAUGLESS, ET AL	0.13					
2513	SARAH JANE DEVINE	1.19					
2514	THOMAS L. LOHRY, ET AL	0.06					
2515	JEAN R. BAUGLESS, ET AL	0.12					
2516	FRANK T. MILLER, ET AL	0.37					
2517	DOROTHY A. SAMS	0.23					
2518	JORAN E. BURGESS, ET AL	0.23					
2519	JOSEPH S. STORACE, ET AL	1.91					
2520	MARY G. NIEMAN, ET AL	0.71					
2521	L. H. PIERCE, ET AL	0.21					
2522	JULIA O. THOMAS, ET AL	0.10					
2523	ALBERT A. KETCHUM, ET AL	0.34					
2524	LUTHER D. MORGAN, ET AL	0.04					
2525	EMMA MULL	0.21					
2526	NORTH BONNEVILLE COMMUNITY IMPROV	0.10					
2527	WILLIAM D. CURRIER, ET AL	0.21					
2528	AUGUST FISCHER, ET AL	0.19					
2529	HESSIE L. FOWLER	0.10					
2530	TIMOTHY A. CORNER, ET AL	0.15					
2531	GERTRUDE TEMPEL AND EVELYN MENRILL	0.15					
2532	C. L. LARSEN, ET AL	0.29					
2533	H. E. MILLER, ET AL	0.16					
2534	JOHN CARY, ET AL	0.11					
2535	JERRY L. RANDALL, ET AL	0.11					
2536	ERIK H. SANDSON, ET AL	0.11					
2537	HELEN GILLEN	0.11					
2538	JOSEPH S. STORACE, ET AL	0.11					
2539	HAROLD L. HOFVET	0.12					
2540	LEWIS F. WOLFE	0.33					
2541	CHARLOTTE D. JOHNSON	0.13					
2542	ARTHUR F. COLE, ET AL	0.22					
2543	KENNETH L. COLE, ET AL	0.18					
2544	DIXIE L. BEERS	0.28					
2545	JOSEPH S. STORACE, ET AL	0.28					
2546	ARTHUR J. MCKENZIE, ET AL	0.14					
2547	PATRICIA FRANKLIN, ET AL	0.24					
2548	L. LARSEN, ET AL	0.11					
2549	ARTHUR J. COLE, ET AL	0.21					
2550	L. LARSEN, ET AL	20.51					
2551	LEWIS F. WOLFE	0.22					
2552	SCHOOL DISTRICT NO. 303	5.94					
2553	RAY ZIEGLER ET AL	5709					
2554	TOWN OF NORTH BONNEVILLE						

ROLL 182.3
DAILY RECORDINGS
COMMISSIONERS
MARRIAGE APPLICATIONS



THIS PRINT REDUCED
TO ONE-HALF SCALE

2nd Ind OCE to NPD dtd 15 January 1974

ACQUISITION AUTHORIZATION

PROJECT MAP (CONTINUATION SHEET)

DEPT OF THE ARMY	USING SERVICE CORPS OF ENGINEERS
LOCATION OF PROJECT	TRANSPORTATION FACILITIES
STATE WASHINGTON	RAILROADS S P & S
COUNTY SKAMANIA	STATE ROADS 14
DIV. NORTH PACIFIC	FEDERAL ROADS
DIST. PORTLAND	AIRLINES

ARMY AREA SIXTH

IN THE TOWN OF NORTH BONNEVILLE

SEGMENT 25

DEPARTMENT OF THE ARMY
OFFICE OF THE PORTLAND DISTRICT ENGINEER
NORTH PACIFIC DIVISION

DRAWN BY: M.J.D.
TRACED BY: H.A.E.
CHECKED BY: W.W.N.
SUBMITTED BY:
RECOMMENDED BY:
APPROVED BY: D.H. Mullen

**REAL ESTATE
BONNEVILLE LOCK AND DAM
WASHINGTON AND OREGON
(LAKE BONNEVILLE)**

DATE: 22 Jan 1974

OFFICE, CHIEF OF ENGINEERS, WASHINGTON, D.C. 20315

SCALE IN FEET
0 100 200

SHEET 35 OF 39 DRAWING NO. BLD-35

NOTE
This was compiled from deed descriptions,
office plats and aerial survey.

REVISIONS	DATE	BY
16 Aug 76	Revised ownership on Tract 2519	M.J.P.
23 Dec 75	Revised or added acreage to Tracts 2514, 2545, & 2547	DES
22 Dec 75	Revised ownerships on Tracts 2534, 2545, & 2547	DES
31 Dec 74	Lic for roadway purposes from 15 Jul 74 to 14 Jul 75	RAE

SCHEDULE C