

Filed April 23, 1915

any party who the
and justice is a true
on the part of the
ARTICLE 1. U.S. District Court
Washington, D.C.
Dye



IN THE
UNITED STATES DISTRICT COURT
FOR THE WESTERN DISTRICT OF WASHINGTON

UNITED STATES OF AMERICA,
Plaintiff,

DECLARATION
OF
TAKING

vs.

CIVIL NO. 175-80T

0.31 ACRE OF LAND, MORE OR LESS,
SITUATE IN SKAMANIA COUNTY, STATE
OF WASHINGTON, AND ERWIN B. PACE,
TRUSTEE, ET AL AND UNKNOWN OWNERS,
Defendants

No. 3889

TO THE HONORABLE,
THE UNITED STATES DISTRICT COURT:

Respectfully,
Erwin B. Pace
By L. A. ...

I, NANCY N. CALHOUN, Secretary of

the Army, do hereby declare that:

1. (a) The land hereinafter described is taken under and in accordance with the Act of Congress approved February 26, 1931 (46 Stat. 1421, 40 U.S.C. 258a), and acts supplementary thereto and amendatory thereof, and under the further authority of the Acts of Congress approved April 24, 1888 (25 Stat. 94, 33 U.S.C. 591), and

1 March 1, 1917 (39 Stat. 948, 33 U.S.C. 701), which authorize the
2 acquisition of land for flood control projects; the Act of Congress
3 approved August 30, 1935 (49 Stat. 1028), which act authorizes the
4 construction of the Bonneville Dam (Oregon and Washington); the Act
5 of Congress, approved August 20, 1937 (50 Stat. 731), which act
6 authorized completion, maintenance and operation of the project and
7 the Act of Congress approved August 28, 1974 (Public Law 93-393),
8 which act appropriated funds for such purposes.

9 (b) The public uses for which said land is taken are
10 as follows: The said land is necessary to provide for the construction
11 of a river improvement for the purposes of flood control, navigation
12 and for other uses incident thereto. The said land has been selected
13 by me for acquisition by the United States for use in connection with
14 the construction and maintenance of the Second Powerhouse which must
15 be provided at the Bonneville Dam, and for such other uses as may be
16 authorized by Congress or by Executive Order.

17 2. A general description of the land being taken is set
18 forth in Schedule "A", attached hereto and made a part hereof, and is
19 a description of the same land described in the complaint in the
20 above entitled cause.

21 3. The estate taken for said public uses is the fee simple
22 title, subject, however, to existing easements for public roads and
23 highways, public utilities, railroads and pipelines.

24 4. A plan showing the land taken is annexed hereto as
25 Schedule "B" and made a part hereof.

5. The sum estimated by me as just compensation for said land, with all buildings and improvements thereon and all appurtenances thereto and including any and all interests hereby taken in said land, is set forth in Schedule "A" herein, which sum I cause to be deposited herewith in the registry of the said court for the use and benefit of the persons entitled thereto. I am of the opinion that the ultimate award for said land probably will be within any limits prescribed by law on the price to be paid therefor.

IN WITNESS WHEREOF, the United States of America, by its Secretary of the Army, thereunto authorized, has caused this declaration to be signed in its name by said *Howard H. Callaway* Secretary of the Army, this *31st* day of *March* A.D. *1915*, in the City of Washington, District of Columbia.

Howard H. Callaway
Secretary of the Army

SCHEDULE "A"

The land which is the subject matter of this Declaration of Taking aggregates 0.31 of an acre, more or less, situate and being in the County of Skamania, State of Washington. Description of the land taken, and a statement of the sum estimated to be just compensation thereof is contained on the following continuation of Schedule "A", comprising two pages, including this page.

Unofficial
Copy

SCHEDULE "A"

Tract 2616

A tract of land situated in Section 21, Township 2 North, Range 7 East of the Willamette Meridian, Skamania County, Washington, being more particularly described as follows:

Commencing at the Northeast corner of said Section 21; thence South 1257.00 feet; thence West 38.93 feet to the Southerly right-of-way line of the Evergreen Highway (State Highway No. 14); thence North 81°00'00" West along said right-of-way 850.00 feet; thence North 79°51'00" West along said right-of-way 525.00 feet to the point of beginning; thence continuing North 79°51'00" West along said right-of-way 75.00 feet; thence South 10°09'00" West 69.50 feet; thence South 71°40'00" East 76.76 feet to a point which is South 10°09'00" West 80.30 feet from the point of beginning; thence North 10°09'00" East 80.30 feet to the point of beginning, said tract being designated as Lot 20 and the Westerly one-half of Lot 19 of Block 4 of the unrecorded plat of the Town of North Bonneville, Washington.

Also including one-half of the adjacent streets and alleys.

The tract of land herein described contains 0.31 of an acre, more or less.

NAME AND ADDRESS OF PURPORTED
OWNER(S) FOR TRACT 2616,
BONNEVILLE LOCK AND DAM
(LAKE BONNEVILLE)

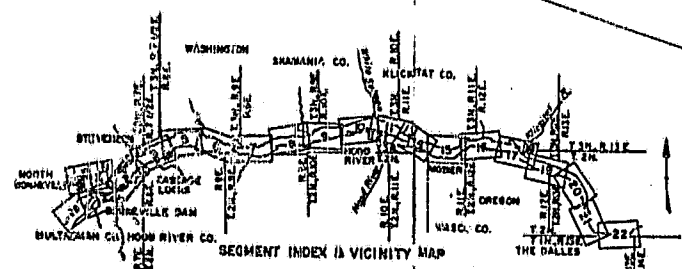
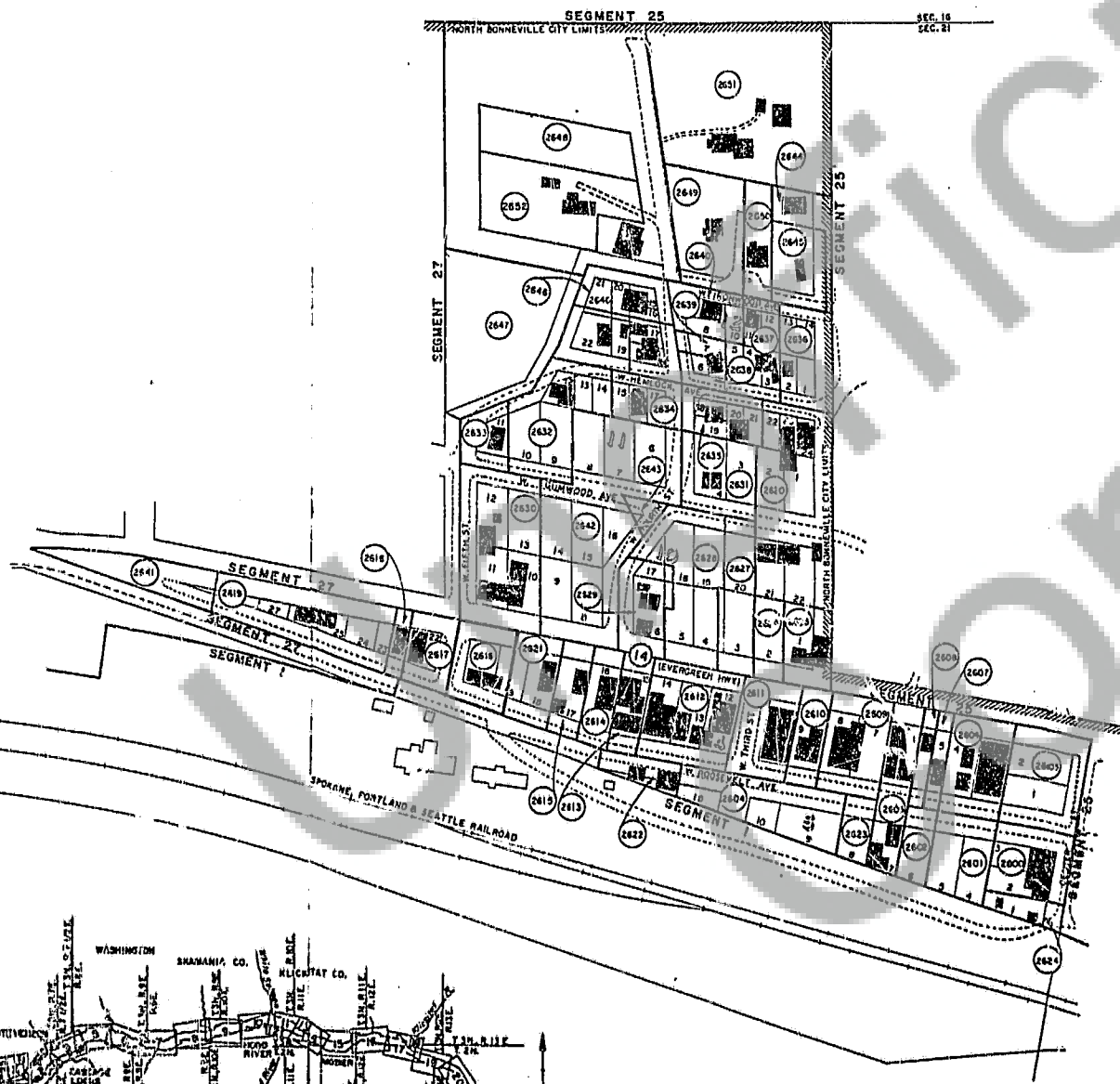
Erwin B. Pace, et al
As Trustee
P.O. Box 292
Bonneville, OR 97008

ESTIMATED COMPENSATION:

\$13,800.00

The gross sum estimated by the acquiring authority to be just compensation for the estate hereby taken, inclusive of all rights set forth in the Declaration of Taking, is THIRTEEN THOUSAND EIGHT HUNDRED and NO/100 DOLLARS (\$13,800.00).

NO.	NAME	AC.	VAL.	PER.	REMARKS
243	FRANK E. COOPER, ET AL.	0.31			
244	ALONZO DAILY	0.13			
245	MARY A. ELIOTT, ET AL.	0.13			
246	JOHN A. GILLES, ET AL.	0.13			
247	JOHN M. PATTERSON, ET AL.	0.13			
248	JOHN L. MANSFIELD, ET AL.	0.13			
249	JOHN L. MANSFIELD, ET AL.	0.13			
250	JOHN L. MANSFIELD, ET AL.	0.13			
251	JOHN L. MANSFIELD, ET AL.	0.13			
252	JOHN L. MANSFIELD, ET AL.	0.13			
253	JOHN L. MANSFIELD, ET AL.	0.13			
254	JOHN L. MANSFIELD, ET AL.	0.13			
255	JOHN L. MANSFIELD, ET AL.	0.13			
256	JOHN L. MANSFIELD, ET AL.	0.13			
257	JOHN L. MANSFIELD, ET AL.	0.13			
258	JOHN L. MANSFIELD, ET AL.	0.13			
259	JOHN L. MANSFIELD, ET AL.	0.13			
260	JOHN L. MANSFIELD, ET AL.	0.13			
261	JOHN L. MANSFIELD, ET AL.	0.13			
262	JOHN L. MANSFIELD, ET AL.	0.13			
263	JOHN L. MANSFIELD, ET AL.	0.13			
264	JOHN L. MANSFIELD, ET AL.	0.13			
265	JOHN L. MANSFIELD, ET AL.	0.13			
266	JOHN L. MANSFIELD, ET AL.	0.13			
267	JOHN L. MANSFIELD, ET AL.	0.13			
268	JOHN L. MANSFIELD, ET AL.	0.13			
269	JOHN L. MANSFIELD, ET AL.	0.13			
270	JOHN L. MANSFIELD, ET AL.	0.13			
271	JOHN L. MANSFIELD, ET AL.	0.13			
272	JOHN L. MANSFIELD, ET AL.	0.13			
273	JOHN L. MANSFIELD, ET AL.	0.13			
274	JOHN L. MANSFIELD, ET AL.	0.13			
275	JOHN L. MANSFIELD, ET AL.	0.13			
276	JOHN L. MANSFIELD, ET AL.	0.13			
277	JOHN L. MANSFIELD, ET AL.	0.13			
278	JOHN L. MANSFIELD, ET AL.	0.13			
279	JOHN L. MANSFIELD, ET AL.	0.13			
280	JOHN L. MANSFIELD, ET AL.	0.13			
281	JOHN L. MANSFIELD, ET AL.	0.13			
282	JOHN L. MANSFIELD, ET AL.	0.13			
283	JOHN L. MANSFIELD, ET AL.	0.13			
284	JOHN L. MANSFIELD, ET AL.	0.13			
285	JOHN L. MANSFIELD, ET AL.	0.13			
286	JOHN L. MANSFIELD, ET AL.	0.13			
287	JOHN L. MANSFIELD, ET AL.	0.13			
288	JOHN L. MANSFIELD, ET AL.	0.13			
289	JOHN L. MANSFIELD, ET AL.	0.13			
290	JOHN L. MANSFIELD, ET AL.	0.13			
291	JOHN L. MANSFIELD, ET AL.	0.13			
292	JOHN L. MANSFIELD, ET AL.	0.13			
293	JOHN L. MANSFIELD, ET AL.	0.13			
294	JOHN L. MANSFIELD, ET AL.	0.13			
295	JOHN L. MANSFIELD, ET AL.	0.13			
296	JOHN L. MANSFIELD, ET AL.	0.13			
297	JOHN L. MANSFIELD, ET AL.	0.13			
298	JOHN L. MANSFIELD, ET AL.	0.13			
299	JOHN L. MANSFIELD, ET AL.	0.13			
300	JOHN L. MANSFIELD, ET AL.	0.13			



NOTE
The boundary of this project was compiled from deed descriptions, actual survey, General Land Office plots, and aerial survey.

THIS PRINT REDUCED TO ONE-HALF SCALE

2nd 1st DCE to NPD 046, 15 January 1934
ACQUISITION AUTHORIZATION

PROJECT MAP (CONTINUATION SHEET)	
REP. OF THE ARMY	10th ARMY CORPS OF ENGINEERS
LOCATION OF PROJECT	TRANSPORTATION FACILITIES
STATE	WASHINGTON
COUNTY	SKAMANIA
CITY	NORTH PACIFIC
POST AREA	PORTLAND
AT THE TOWN OF NORTH BONNEVILLE	
SEGMENT 26	
DEPARTMENT OF THE ARMY	
OFFICE OF THE PORTLAND DISTRICT ENGINEER	
NORTH PACIFIC DIVISION	
DESIGNED BY	M. J. D.
PLANNED BY	M. J. D.
ENGINEERED BY	M. J. D.
CHECKED BY	M. J. D.
APPROVED BY	D. H. Thullen
BONNEVILLE LOCK AND DAM	
WASHINGTON AND OREGON	
(LAKE BONNEVILLE)	
SCALE IN FEET	
1 inch = 100 feet	