

LAND CORNER RECORD

(THIS FORM PRESCRIBED BY THE PUBLIC LAND SURVEY OFFICE, DEPARTMENT OF NATURAL RESOURCES, PURSUANT TO RCW 58.09. ALPHA-NUMERIC INDEX DIAGRAM ON THE BACK.)

119277

CORNER INDEXING INFORMATION:

TWP 2 N RGE 6 E CORNER CODE W-15
(Willamette Meridian) (See instructions on back of LCR)

ADDITIONAL IDENTIFIER: (e.g., BLM designation for the corner, street intersection, plat name, block, lot, etc.)

FILED FOR RECORD
CLATSOP COUNTY AUDITOR

94 APR 15 AM 9:49

BOOK 142 PAGE 779
FILED BY T. N. Trantow
RETURN TO File

VOL 308 PAGE 368-369

C-N 1/16 Section 34

COUNTY: Skamania

LAND SURVEYOR INFORMATION: (or Public Officer as per RCW 58.09.090)

This corner record correctly represents work performed by me or under my direction in conformance with the Survey Recording Act.

COMPANY OR AGENCY:

TRANTOW SURVEYING, INC.
P.O. BOX 287
BINGEN, WA 98605

ADDRESS:

AUDITOR'S USE



March 29, 1994
SEAL/SIGNATURE/DATE

WASHINGTON PLANE COORDINATES: N: E:

ORDER: ZONE: DATUM (Date of adjustment):

CORNER INFORMATION: Use the space below to provide the following information regarding the corner:
(1) Pertinent Corner History, (2) Evidence Found at the Corner and (3) Corner Perpetuation Information. Please title and number the parts of your discussion accordingly. 1 additional space is needed use the back. (For (3), diagram the references. Also, provide the cross-reference to a map of record, if applicable, the surveyor's field book number/page number, and the date of work.) (See the back of this form for the requirements of the Survey Recording Act.)

1. No record of previous establishment.
2. No evidence of previous establishment.
3. A survey of the N-S centerline of Section 34 was measured during the period of February 9-14, 1994 to be 2628.63 between the calculated C 1/4 and the N 1/4. The C-N 1/16 was set by single proportion at a midpoint on the line, and monumented with a 5/8" x 30" iron rod with 1" plastic cap, from which bear:
 - 24" white fir, N29W, 24.50' to nail at center of tree scribed WT on face 1' above ground.
 - 12" red maple, N60E, 3.58' to nail at center of tree scribed WT on face 1' above ground.Corner lies approximately 100' west of Woodard Creek Road.

See Book 3, Page 28 of Surveys for related information.

FILED FOR RECORD
SKAMANIA CO. WASH
BY Terry Trantow

APR 27 2 54 PM '94

P. Olson
AUDITOR
GARY M. OLSON

Corner set 3/29/94.
Job No. 93945

Registered _____
Indexed, Dir _____
Indirect _____
Traced _____
Mailed _____

DATE OF FORM: 2/92

VOL 308 PAGE 368

MARK THE CORNER LOCATION ON THE DIAGRAM BELOW AND FILL IN THE CORNER CODE BLANK ON THE OTHER SIDE:

(1) For corners located at the intersection of two lines (Section corners, quarter corners and sixteenth corners):

(a) The corner code is the alpha-numeric coordinate from the diagram below that corresponds to the appropriate intersection of lines.

(2) For corners that are not located at the intersection of two lines (Meander corners, DLC's, MES's, reservation boundaries, mining claims, etc.):

(a) For corners that are on one line only the corner code is the line designation and the related line segment; i.e., a corner on line 5 between "B" and "C" is designated BC-5.

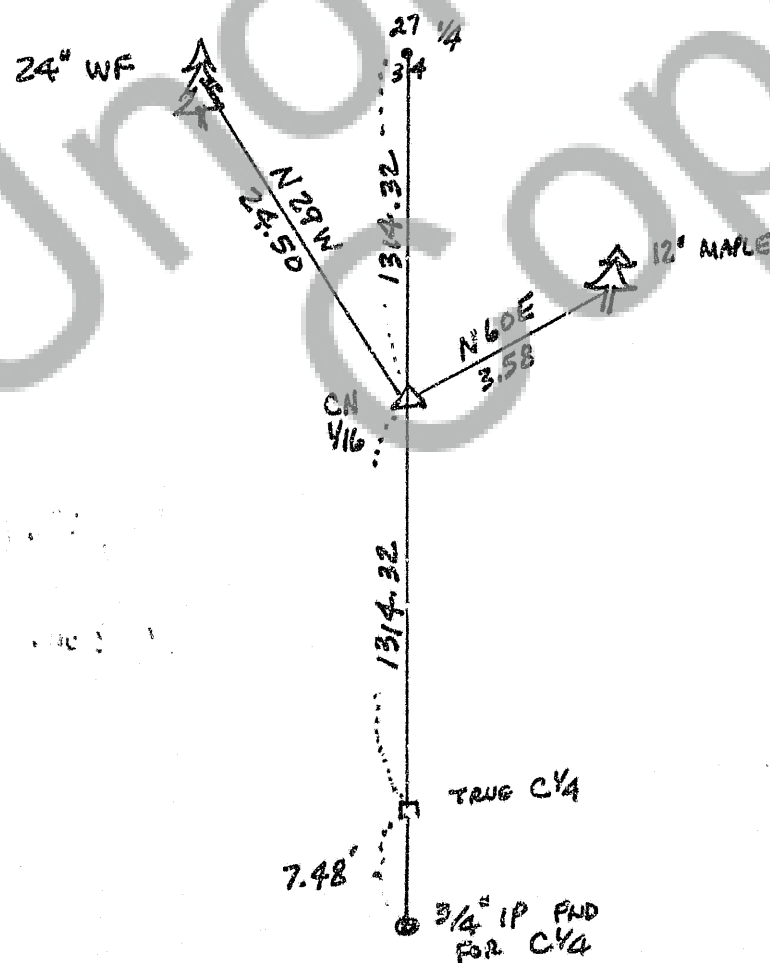
(b) For corners that are between lines the corner code is both line segments; i.e., a corner in the SE1/4 of the SE1/4 of section 18 is designated MN-4-5.

1 2 3 4 5 6 7 8 9 10 11 12 13 14 15 16 17 18 19 20 21 22 23 24 25

A																								
B																								
C	6			5				4				3				2				1				
D																								
E																								
F																								
G	7			8				9				10				11				12				
H																								
J																								
K																								
L	18			17				16				15				14				13				
M																								
N																								
O																								
P	19			20				21				22				23				24				
Q																								
R																								
S																								
T	30			29				28				27				26				25				
U																								
V																								
W																								
X	31			32				33				34				35				36				
Y																								
Z																								

RCW 58.05.060 (2) requires the following information on this form: an accurate description and location, in reference to the corner position, of all monuments and accessories (a) found at the corner and (b) placed or replaced at the corner; (c) basis of bearings used to describe or locate such monuments or accessories; and (d) corollary information that may be helpful to relocate or identify the corner position.

SPACE FOR ADDITIONAL COMMENT:



N
No SCALE