

151214

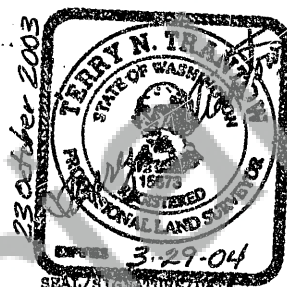
BOOK 254 PAGE 557

FILED IN RECORD  
SKAMIA COUNTY WASH  
BY *Terry Frantaw*  
Nov 20 11 29 AM '03  
*Garvin*  
AUDITOR  
J. MICHAEL GARVISON

## LAND CORNER RECORD

GRANTOR/SURVEYOR/PUBLIC OFFICER: This corner record correctly represents work performed by me or under my direction in conformance with the Survey Recording Act.

COMPANY OR AGENCY: TRANTOW SURVEYING, INC  
ADDRESS: PO BOX 287 - 412 W. JEFFERSON  
BINGEN, WA 98605-C287



GRANTEE: PUBLIC

LEGAL: TWP: 1 N

RGE: 5 E

CORNER CODE: G-17

ADDITIONAL IDENTIFIER: (BLM designation, street or plat names, block, lot, etc.)  
1/4 corner common to Section 10 and 11

COUNTY: SKAMANIA

WASHINGTON PLANE COORDINATES: N:

E:

ORDER:

ZONE:

DATUM (Date of adjustment):

CORNER INFORMATION: Discuss the history, evidence found, and perpetuation of the corner. Diagram the references; provide the date of work; and, if applicable, a reference to a map of record and/or the field book/page no. Use the back, if needed.

Corner established by G.L.C. in 1880, no record of recovery.

LS 9025 set a brass cap for this corner in May, 1980 using GLO record distance from the Northeast corner of Section 10 (Book 1, Page 248 of Surveys, AF# 60972). No record of any witness objects.

Monument subsequently destroyed by brush clearing. Using control and existing monuments from ROS in Book 3, Page 293 of Short Plats, AF# 126774, I set a 5/8" x 30" iron rod with a 2" aluminum cap 28" in the ground, at the calculated position, from which bear:

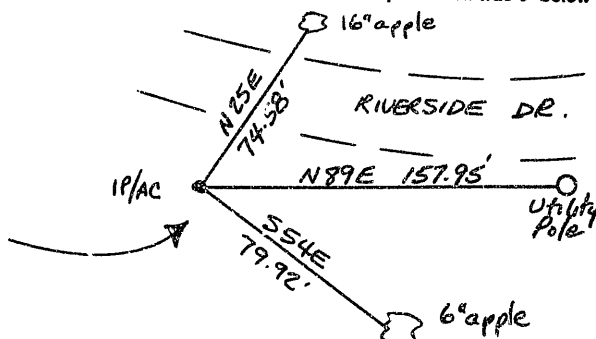
16" apple on North edge of Riverside Drive, N 2° E, 74.58 feet to nail at center in base of tree

6" apple, S 54° E, 79.92 feet to nail at center in base of tree

Utility pole, N 89° E, 157.95 feet to center of pole on South edge of Riverside Drive

Base of a steel fence post, S 05° W, 1.56 feet (post was sheared off, the top of which was 8" below the surface).

Work conducted October 15, 2003



**MARK THE CORNER LOCATION BELOW AND FILL IN THE CORNER CODE BLANK ON THE OTHER SIDE:**  
 For corners at the intersection of two lines, the corner code is the alphanumeric coordinate that corresponds to the appropriate intersection of lines.

For corners that are only on one line, the corner code is the line designation and the related line segment; i.e., a corner on line 5 between "B" and "C" is designated BC-5.

For corners that are between lines, the corner code is both line segments; i.e., a corner in the SE1/4 of the SE1/4 of section 18 is designated MN 4-5.

RCW 58.09.060 (2) requires the following information on this form: an accurate description and location, in reference to the corner position, of all monuments and accessories (a) found at the corner and (b) placed or replaced at the corner; (c) basis of bearings used to describe or locate such monuments or accessories; and (d) corollary information that may be helpful to relocate or identify the corner position.

SPACE FOR ADDITIONAL COMMENT: