

147909

BOOK 258 PAGE 529

FILED
SPACED
RECORDED
Trantow Surveying

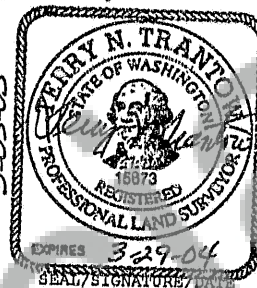
Mar 12 10 42 AM '03

O. Lowry
J. MICHAEL J. JOHNSON

LAND CORNER RECORD

GRANTOR/SURVEYOR/PUBLIC OFFICER: This corner record correctly represents work performed by me or under my direction in conformance with the Survey Recording Act.

COMPANY OR AGENCY: TRANTOW SURVEYING, INC
ADDRESS: PO BOX 287 - 412 W. JEFFERSON
BINGEN, WA 98605-0287



GRANTEE: PUBLIC

LEGAL: TWP: 2 N

RGE: 5 E

CORNER CODE: R 9

ADDITIONAL IDENTIFIER: (BLM designation, street or plat names, block, lot, etc.)

Corner to Sections 20, 21, 28 & 29

COUNTY: SKAMANIA

WASHINGTON PLANE COORDINATES: N:

E:

ORDER:

ZONE:

DATUM (Date of adjustment):

CORNER INFORMATION: Discuss the history, evidence found, and perpetuation of the corner. Diagram the references; provide the date of work; and, if applicable, a reference to a map of record and/or the field book/page no. Use the back, if needed.

GLO in 1859 set a post for this corner, from which bear:

20" fir, N81W, 110 links (72.60); 20" fir, S37W, 107 links (70.62)

48" fir, N60E, 139 links (91.74); 4" willow, S38E, 22 links (14.52)

Ben Lonn in July, 1963 found three bearing trees: 42" fir stump with scribing, N81W, 72.6 ft.;

48" fir stump with bottom of old face, S36W, 69.6 ft.; a rotten fir stump, N60E, 92.0 ft. From a locus of the calls he set a DNR concrete monument, from which bear: 42" fir stump, N81W, 72.4 feet;

48" fir stump, S35½W, 70.1 feet; 6" hemlock, N52E, 28.6 feet. His record indicates finding a Skamania County IP/BC at S83W, 55.0 feet, with the comment: "On July 16, 1963 I notify Clark Eldridge, Skamania County Engineer of discrepancy. He requests me to remove pipe & brass cap and on July 17, 1963 I so did."

Monument is in good condition. From the monument bear: 48" fir, N78W, 72.33 ft. to nail in face of stump; iron pipe [brass cap has been removed] at fence corner, S85W, 55.15 ft.; 24" red cedar, N54E, 29.60 ft. to nail in base at center of tree. Note: The 1938 BPA map of the North Bonneville-Troutdale BPA Lines, sheet 13/28, depicts this corner as the County IP/BC.

Date of work: January 8, 19, 2003.

MARK THE CORNER LOCATION BELOW AND FILL IN THE CORNER CODE BLANK ON THE OTHER SIDE:
For corners at the intersection of two lines, the corner code is the alphanumeric coordinate that corresponds to the appropriate intersection of lines.

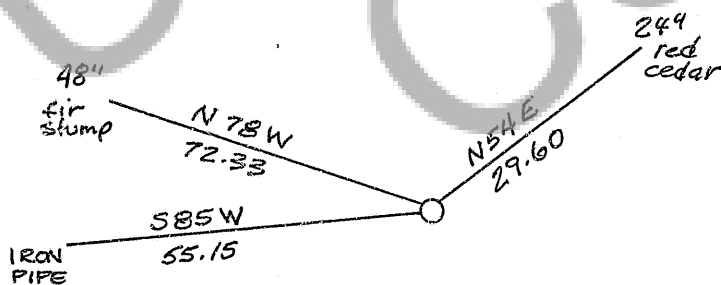
For corners that are only on one line, the corner code is the line designation and the related line segment; i.e., a corner on line 5 between "B" and "C" is designated BC-5.

For corners that are between lines, the corner code is both line segments; i.e., a corner in the SE1/4 of the SE1/4 of section 18 is designated MN 4-5.

	1	2	3	4	5	6	7	8	9	10	11	12	13	14	15	16	17	18	19	20	21	22	23	24	25	
A																										A
B																										B
C																										C
D																										D
E																										E
F																										F
G																										G
H																										H
J																										J
K																										K
L																										L
M																										M
N																										N
O																										O
P																										P
Q																										Q
R																										R
S																										S
T																										T
U																										U
V																										V
W																										W
X																										X
Y																										Y
Z																										Z

RCW 58.09.060 (2) requires the following information on this form: an accurate description and location, in reference to the corner position, of all monuments and accessories (a) found at the corner and (b) placed or replaced at the corner; (c) basis of bearings used to describe or locate such monuments or accessories; and (d) corollary information that may be helpful to relocate or identify the corner position.

SPACE FOR ADDITIONAL COMMENT:



T2N R5E
S20 S21
S29 S28
1963