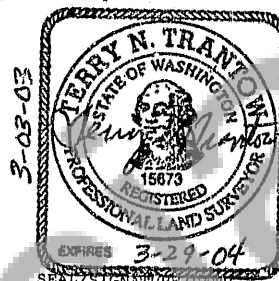


FILED  
 STATE OF WASHINGTON  
 BY *Trantow Surveying*  
 Mar 12 10 35 AM '03  
*Blaszy*  
 J. MICHAEL DIVISION

## LAND CORNER RECORD

GRANTOR/SURVEYOR/PUBLIC OFFICER: This corner record correctly represents work performed by me or under my direction in conformance with the Survey Recording Act.

COMPANY OR AGENCY: TRANTOW SURVEYING, INC  
 ADDRESS: PO BOX 287 - 412 W. JEFFERSON  
 BINGEN, WA 98605-0287



GRANTEE: PUBLIC

LEGAL: TWP: 2 N

RGE: 5 E

CORNER CODE: R-11

ADDITIONAL IDENTIFIER: (BLM designation, street or plat names, block, lot, etc.)

¼ corner between 21 &amp; 28

COUNTY: SKAMANIA

WASHINGTON PLANE COORDINATES: N: E:

ORDER: ZONE: DATUM (Date of adjustment):

CORNER INFORMATION: Discuss the history, evidence found, and perpetuation of the corner. Diagram the references; provide the date of work; and, if applicable, a reference to a map of record and/or the field book/page no. Use the back, if needed.

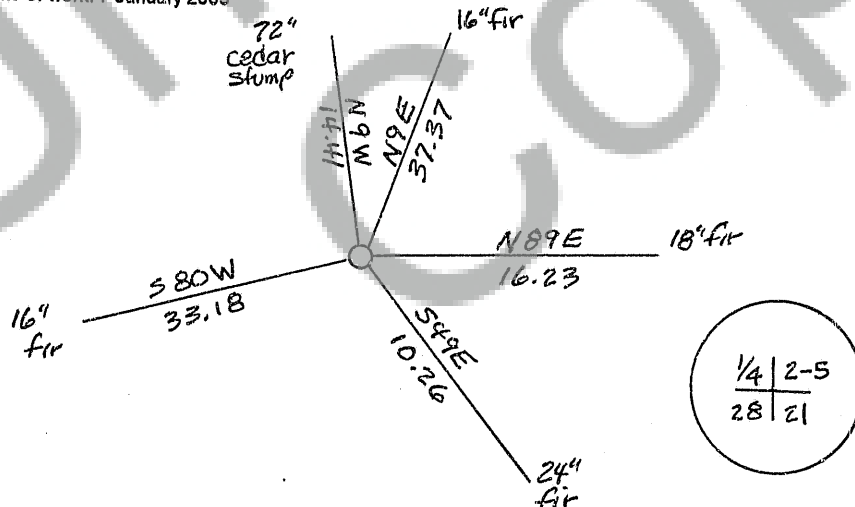
GLO in 1859 set a post for this corner, from which bear: 72" dead cedar, N25W, 15 links [9.90 ft.]; 4" willow, S23E, 23 links (15.18 ft.)

In 1966, Aalvik & Garwood found a Skamania Co. IP & BC and set an iron post with tag at the South edge of the monument.

Found Skamania Co. IP & BC, 2 ft. above natural ground, from which bear:

72" cedar stump, N9W, 14.41 ft. to nail at center of stump; 16" fir, N09E, 37.37 ft. to nail at center of tree; 16" fir, S80W, 33.18 ft. to nail at center of tree scribed WT; 18" fir, N89E, 16.23 ft. to nail at center of tree scribed WT; 24" fir, S49E, 10.26 ft. to nail at center of tree within BPA strip, scribed WT.

Date of work: 7 January 2003



MARK THE CORNER LOCATION BELOW AND FILL IN THE CORNER CODE BLANK ON THE OTHER SIDE:  
For corners at the intersection of two lines, the corner code is the alphanumeric coordinate that corresponds to the appropriate intersection of lines.

For corners that are only on one line, the corner code is the line designation and the related line segment; i.e., a corner on line 5 between "B" and "C" is designated BC-5.

For corners that are between lines, the corner code is both line segments; i.e., a corner in the SE1/4 of the SE1/4 of section 18 is designated MN 4-5.

	1	2	3	4	5	6	7	8	9	10	11	12	13	14	15	16	17	18	19	20	21	22	23	24	25
A																									
B																									
C																									
D																									
E																									
F																									
G																									
H																									
J																									
K																									
L																									
M																									
N																									
O																									
P																									
Q																									
R																									
S																									
T																									
U																									
V																									
W																									
X																									
Y																									
Z																									

RCW 58.09.060 (2) requires the following information on this form: an accurate description and location, in reference to the corner position, of all monuments and accessories (a) found at the corner and (b) placed or replaced at the corner; (c) basis of bearings used to describe or locate such monuments or accessories; and (d) corollary information that may be helpful to relocate or identify the corner position.

SPACE FOR ADDITIONAL COMMENT: