

147905

BOOK 238 PAGE 621

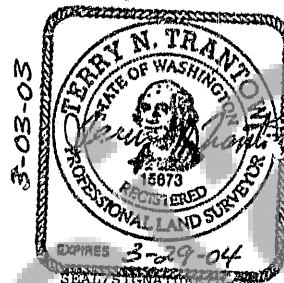
FILED
STATE OF WASH
N. Trantow Surveying

Mar 12 10 00 AM '03

J. MICH
J. MICH

LAND CORNER RECORD

GRANTOR/SURVEYOR/PUBLIC OFFICER: This corner record correctly represents work performed by me or under my direction in conformance with the Survey Recording Act.

COMPANY OR AGENCY: TRANTOW SURVEYING, INC
ADDRESS: PO BOX 287 - 412 W. JEFFERSON
BINGEN, WA 98605-0287

GRANTEE: PUBLIC

LEGAL: TWP: 2N

RGE: 5E

CORNER CODE: QR-13

ADDITIONAL IDENTIFIER: (BLM designation, street or plat names, block, lot, etc.)

Line tree between Sections 21 & 22

COUNTY: SKAMANIA

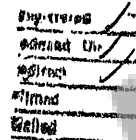
WASHINGTON PLANE COORDINATES: N:

E:

ORDER:

ZONE:

DATUM (Date of adjustment):



CORNER INFORMATION: Discuss the history, evidence found, and perpetuation of the corner.

Diagram the references; provide the date of work; and, if applicable, a reference to a map of record and/or the field book/page no. Use the back, if needed.

GLO in 1859 called a 30" fir line tree at 18 chains. An 1883 retracement called a 40" fir at 18 chains.

Olson Engineering (LS 9025) in 1982 set iron pipe w/brass cap as witness corner to 40" Line tree [see B.2,

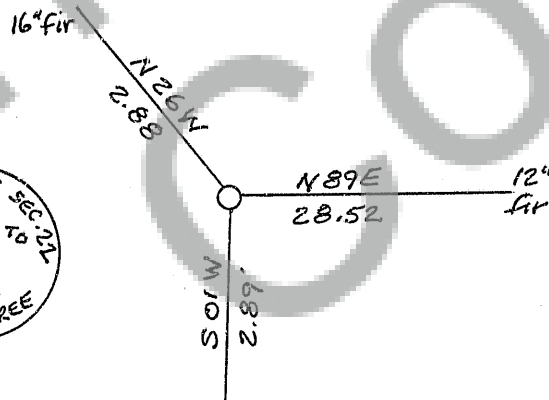
P.107 Surveys, sheet 17/17]. From the brass cap as witness corner bear:

RR spike, 15" fir, N27W, 3.87 ft.; RR spike, 12" fir, S29E, 7.6 ft.; RR spike in center 24" stump remains, S01°25'13"W, 3.00 feet; RR spike, 10" fir, N82E, 28.13 feet)

Found witness corner to Line Tree, 3" brass cap, 0.40 ft. above natural ground, from which bear:

16" fir, N26W, 2.88 feet; 12" fir, N89E, 28.52 feet; Center of Line Tree stump remains, S01W, 2.89 feet

All trees have witness tags. Date of work: 6 January 2003

LINE TREE
STUMP REMAINS

This form is in compliance with the intent of RCW 65.04.045 and prescribed by the Public Land Survey Office, Department of Natural Resources - 1/97.

MARK THE CORNER LOCATION BELOW AND FILL IN THE CORNER CODE BLANK ON THE OTHER SIDE:
For corners at the intersection of two lines, the corner code is the alphanumeric coordinate that corresponds to the appropriate intersection of lines.

For corners that are only on one line, the corner code is the line designation and the related line segment; i.e., a corner on line 5 between "B" and "C" is designated BC-5.

For corners that are between lines, the corner code is both line segments; i.e., a corner in the SE1/4 of the SE1/4 of section 18 is designated MN 4-5.

	1	2	3	4	5	6	7	8	9	10	11	12	13	14	15	16	17	18	19	20	21	22	23	24	25	
A																										A
B																										B
C																										C
D																										D
E																										E
F																										F
G																										G
H																										H
J																										J
K																										K
L																										L
M																										M
N																										N
O																										O
P																										P
Q																										Q
R																										R
S																										S
T																										T
U																										U
V																										V
W																										W
X																										X
Y																										Y
Z																										Z
	1	2	3	4	5	6	7	8	9	10	11	12	13	14	15	16	17	18	19	20	21	22	23	24	25	

RCW 58.09.060 (2) requires the following information on this form: an accurate description and location, in reference to the corner position, of all monuments and accessories (a) found at the corner and (b) placed or replaced at the corner; (c) basis of bearings used to describe or locate such monuments or accessories; and (d) corollary information that may be helpful to relocate or identify the corner position.

SPACE FOR ADDITIONAL COMMENT: