

140576

BOOK 207 PAGE 630

FILED FOR RECORD  
SKAMANIA CO. WASH  
BY *Terry Trantow*

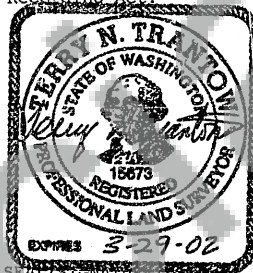
MAR 14 4 22 PM '01

*G. Lowry*  
AUDITOR  
GARY M. OLSON

## LAND CORNER RECORD

GRANTOR/SURVEYOR/PUBLIC OFFICER: This corner record correctly represents work performed by me or under my direction in conformance with the Survey Recording Act.

COMPANY OR AGENCY: TRANTOW SURVEYING, INC.

ADDRESS: 412 W. JEFFERSON - PO BOX 287  
BINGEN, WA 98605-0287

GRANTEE: PUBLIC

LEGAL: TWP:2N

RGE: E

CORNER CODE: V-17

ADDITIONAL IDENTIFIER: (BLM designation, street or plat names, block, lot, etc.)  
Corner to sections 26, 27, 34 & 35

COUNTY: SKAMANIA

WASHINGTON PLANE COORDINATES: N:

E:

ORDER:

ZONE:

DATUM (Date of adjustment):

CORNER INFORMATION: Discuss the history, evidence found, and perpetuation of the corner.

Diagram the references; provide the date of work; and, if applicable, a reference to a map of record and/or the field book/page no. Use the back, if needed.

Original corner set in 1860 by GLO under Contract No. 47, a post, from which bear:

60" fir, N25E, 10 links (6.60 ft.); 66" fir, N20W, 23 links (15.18 ft.)

18" fir, S71W, 42 links (27.72 ft.); 6" alder, S62E, 70 links (46.20 ft.)

1941 BPA R/W plat indicates a 6x6x10" rock in a E-W-S fence intersection

1962 plat of Woodard Marina Estates (Book A, Page 44 of Plats) shows a stone with X

Book 1, Page 34 of Surveys in 1974 indicates 2 BT's found, 1 with scribing and rock with X, fwb:

22" oak, S58W, 17.50 ft.; 12" fir, N36W, 38.65 ft.; 14" alder, N26E, 8.00 ft. All WT's have a RR spike.

Book 1, Page 128 of Surveys in 1977 indicates a stone with + found.

Book 3, Page 97 of Surveys in 1992 and Book 3, Page 224 of Short Plats in 1993 indicate stone at fence intersection.

The old fence corner has been excavated and a 12" utility pole has been placed as a new fence corner.

No trace found of the stone, but the remains of the S.27 BT were found in addition to the three 1974 witness trees. I set a 5/8" x 30" iron rod with a 2" aluminum cap 28" in the ground, from which bear:

Rotted 66" D-fir stump, N20W, 17.25 ft. to center

RR spike in face of 22" alder, N26E, 7.70 ft. Marked with metal tag.

5" maple, S17E, 28.20 ft. to nail at center of tree marked with metal tag.

22" rotted oak stump, S58W, 18.0 ft., RR spike lying on ground.

8" hemlock, N82W, 32.5 ft. to nail at center of tree marked with metal tag.

27" D-fir, N36W, 38.0 ft. to nail at center of tree marked with metal tag. RR spike not found.

Work done January 18, 2001. All bearings magnetic with 22°E declination.

Surveyed	/
Checked	/
Witnessed	/
Witnessed	/
Witnessed	/



MARK THE CORNER LOCATION BELOW AND FILL IN THE CORNER CODE BLANK ON THE OTHER SIDE:  
For corners at the intersection of two lines, the corner code is the alphanumeric coordinate that corresponds to the appropriate intersection of lines.

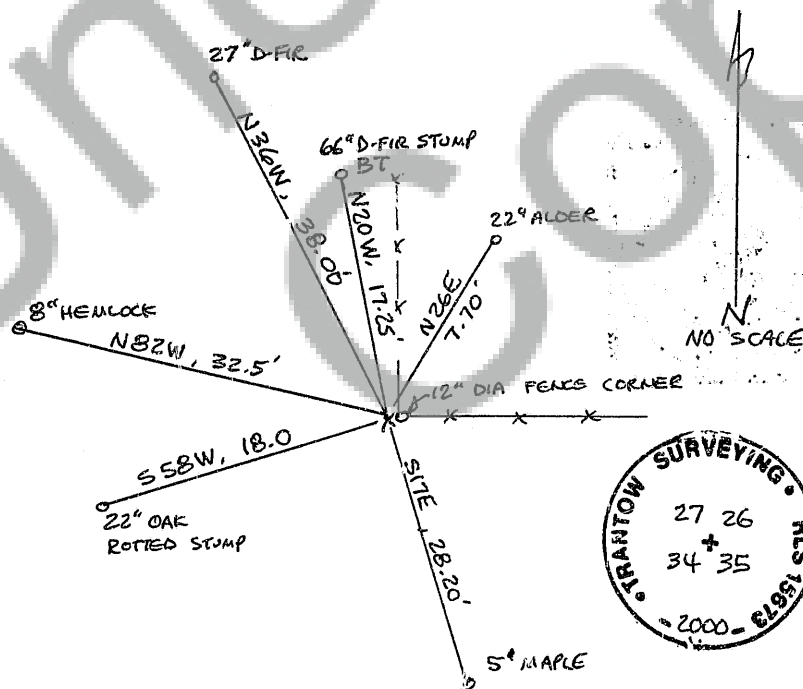
For corners that are only on one line, the corner code is the line designation and the related line segment; i.e., a corner on line 5 between "B" and "C" is designated EC-5.

For corners that are between lines, the corner code is both line segments; i.e., a corner in the SE1/4 of the SE1/4 of section 18 is designated MN 4-5.

	1	2	3	4	5	6	7	8	9	10	11	12	13	14	15	16	17	18	19	20	21	22	23	24	25
A																									
B																									
C																									
D																									
E																									
F																									
G																									
H																									
J																									
K																									
L																									
M																									
N																									
O																									
P																									
Q																									
R																									
S																									
T																									
U																									
V																									
W																									
X																									
Y																									
Z																									

RCW 58.09.060 (2) requires the following information on this form: an accurate description and location, in reference to the corner position, of all monuments and accessories (a) found at the corner and (b) placed or replaced at the corner; (c) basis of bearings used to describe or locate such monuments or accessories; and (d) corollary information that may be helpful to relocate or identify the corner position.

SPACE FOR ADDITIONAL COMMENT:



191710